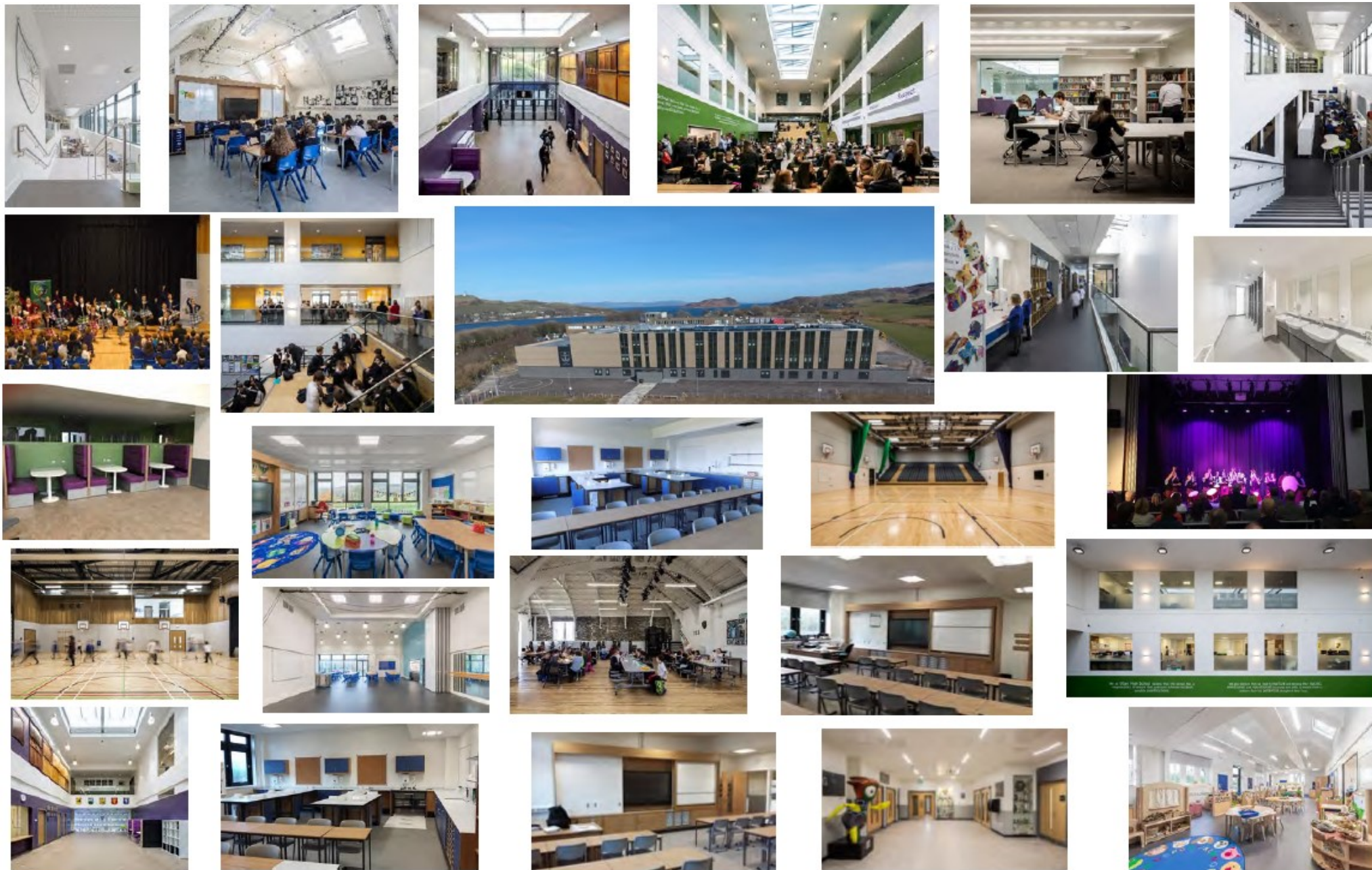


Education - Argyll & Bute Projects completed within the last 5 years







Why Mull?

One of the key principles for Argyll and Bute is for 'children to be educated in accessible A or B graded schools.

A school condition rating is the measure of the state of the fabric of the school, along with safety and security. School suitability is the measure of what can be achieved in the learning facility and is concerned with whether or not a learning facility is fit for the purpose of delivering its educational curriculum.

Currently, Tobermory Primary and Tobermory High Schools are the only Category C schools on the island and Tobermory is the only Category C Secondary school in Argyll and Bute



Contact us:



Mull.campus@argyll-bute.gov.uk



01369 704000



www.argyll-bute.gov.uk



Argyll & Bute Council - Education
 Kilmory
 Lochgilphead
 Argyll PA31 8TE



Learning Estate Investment Programme (LEIP)

National Outcomes

The Scottish Government and COSLA have shown their commitment to invest in the learning estate through their strategy 'Scotland's Learning Estate Strategy: Connecting People, Places and Learning'. The National strategy recognises the importance of the learning estate in supporting outcomes that are necessary for a more successful Scotland. This vision is for: 'A learning estate which supports excellence and equity for all'.

The National Learning Estate Strategy is aligned to the education policy aims set out in the National Improvement Framework (NIF) of achieving excellence and equity for all children and young people and closing the poverty related attainment gap

The specific National outcomes to which the strategy primarily relates are:-

- We grow up loved, safe and respected
- We are well educated, skilled and able to contribute to society
- We are healthy and active
- We live in communities that are inclusive, empowered, resilient and safe
- We have thriving and innovative businesses with quality jobs and fair work for everyone; and
- We have a globally competitive, entrepreneurial, inclusive and sustainable economy.

The Argyll and Bute learning estate will support the three key national education and skills priorities:

- Getting it right for every child (GIRFEC)
- Curriculum for Excellence
- Developing the Young Workforce (DYP)

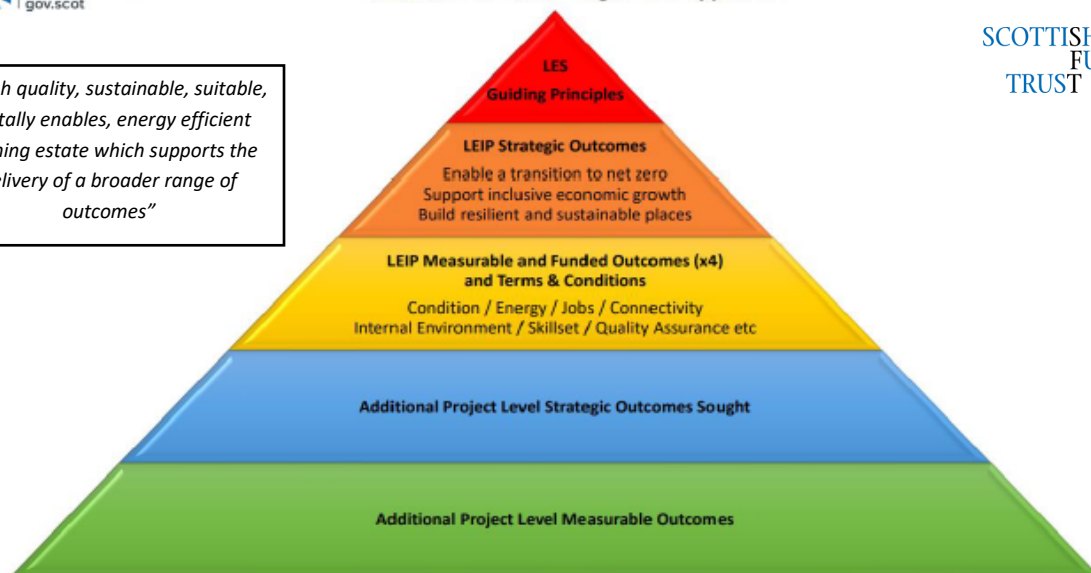
The National strategy sets out ten guiding principles which are:

1. Learning environments should support and facilitate excellent joined up learning and teaching to meet the needs of all learners
2. Learning environments should support the wellbeing of all learners
3. The learning estate should be well-managed and maintained, making the best of existing resources, maximising occupancy and representing and delivering best value
4. The condition and suitability of learning environments should support and enhance their function
5. Learning environments should serve the wider community where appropriate be integrated with the delivery of other public services in line with the place principle
6. Learning environments should be greener, more sustainable, allow safe and accessible routes for walking, cycling and wheeling and be digitally enabled
7. Outdoor learning and the use of outdoor learning environments should be maximised
8. Good consultation about learning environments, direct engagement with learners and communities about their needs, and experiences, and an involvement in decision making processes should lead to better outcomes for all
9. Collaboration across the learning estate, and collaboration with partners in localities, should support maximising its full potential; and finally,
10. Investment in Scotland's learning estate should contribute towards improving learning outcomes and support sustainable and inclusive economic growth



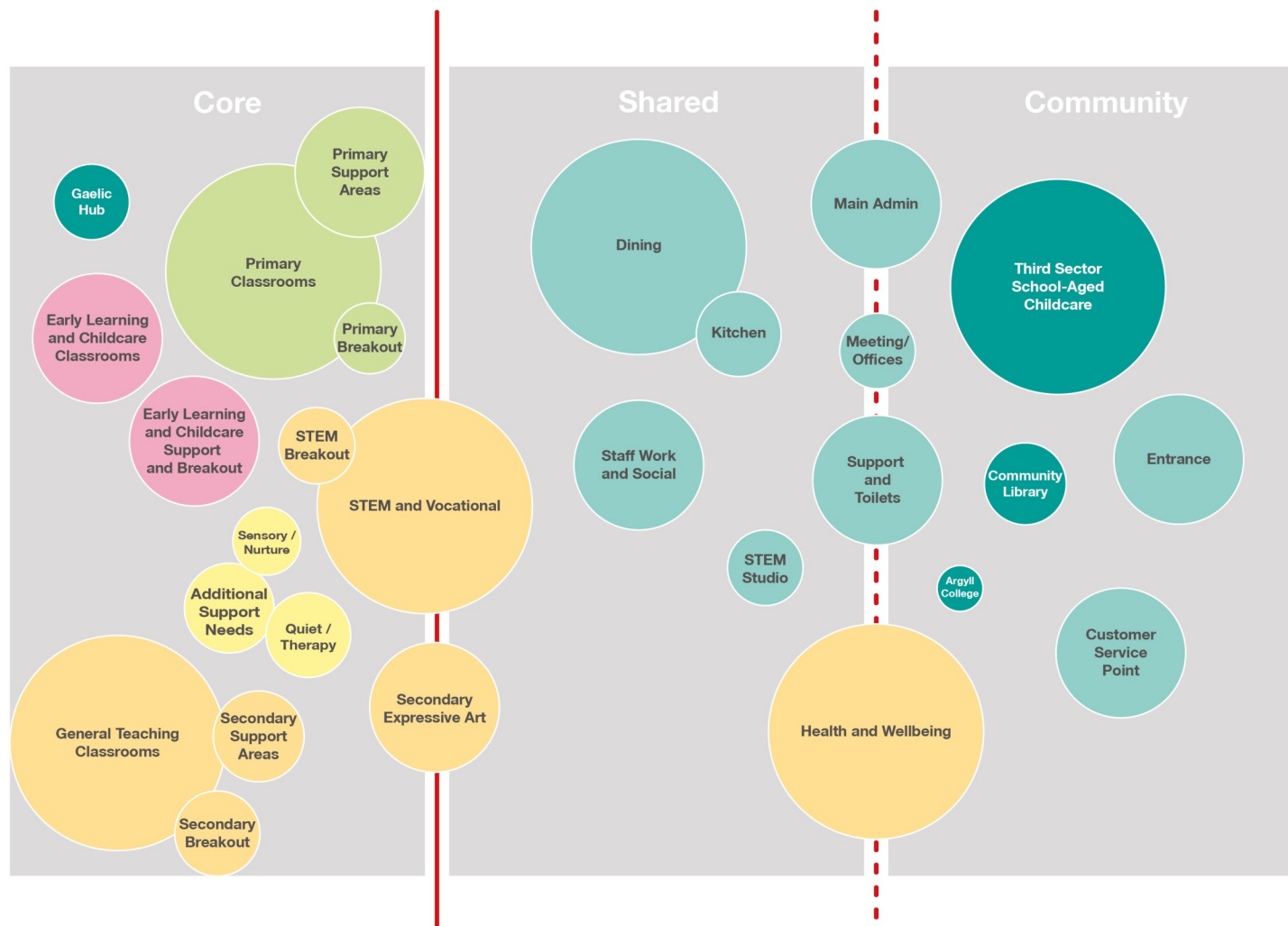
"a high quality, sustainable, suitable, digitally enables, energy efficient learning estate which supports the delivery of a broader range of outcomes"

An Outcomes Based Programme Approach

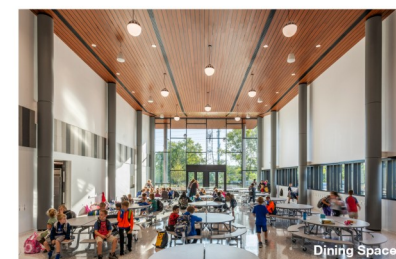
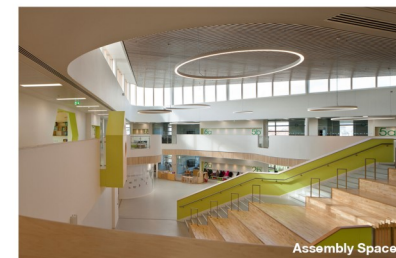
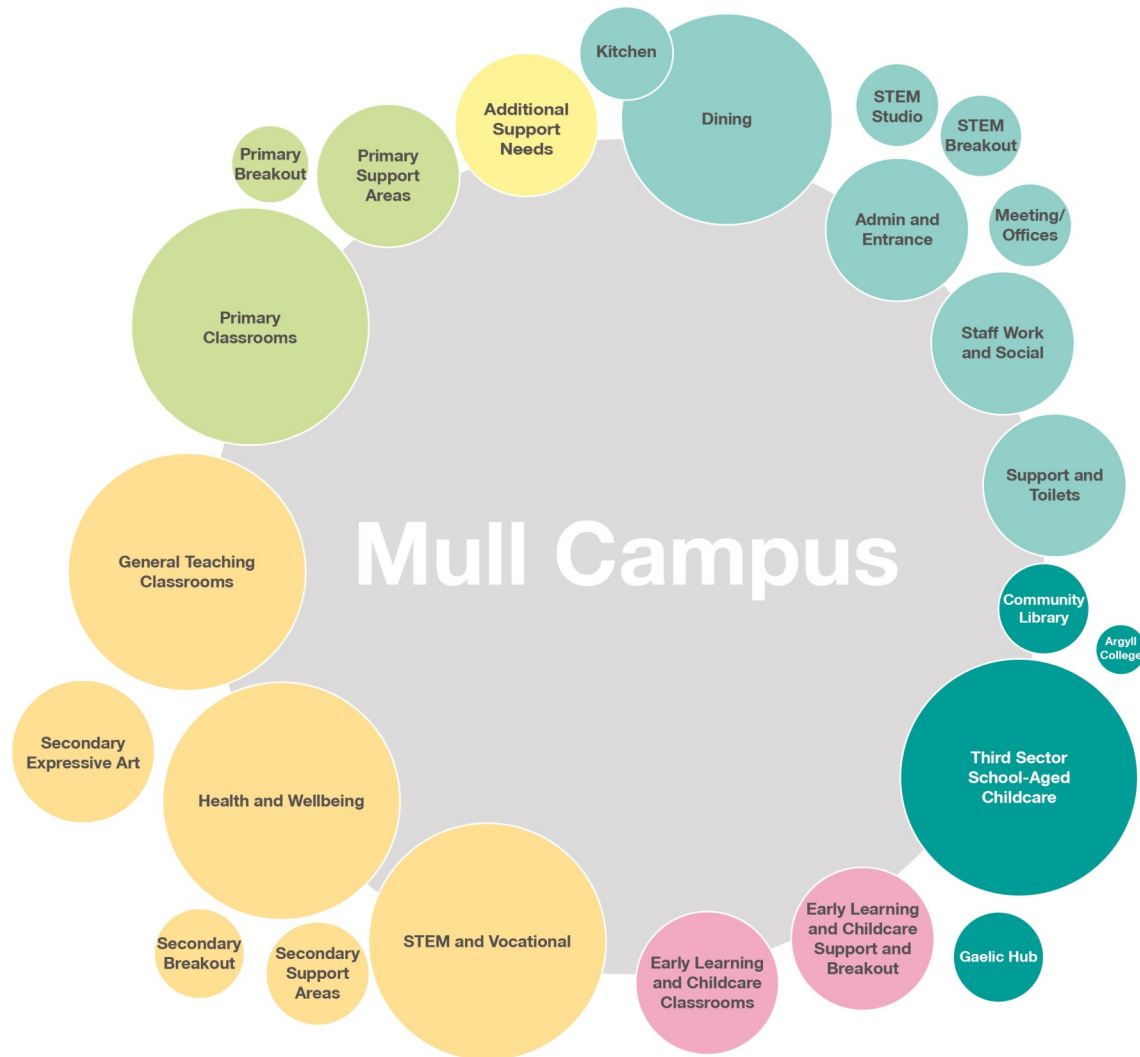


SCOTTISH FUTURE TRUST

Mull Campus Core and Shared Spaces



Mull Campus Key Spaces



Adjacencies and proposed accommodation schedule are indicative for this stage, and will be further developed through engagement with key stakeholders

New Campus on Mull - Pre-Engagement

What do we need from you?

As you have heard in the presentation, the school that has been highlighted with a C suitability rating is Tobermory 2-18, however this is a once in a lifetime opportunity to widen the scope of the project and achieve a state of the art facility that will enable pupils to realise their full potential, and enjoy their learning experience. Our vision is that we will realise ambition, excellence and equality for all, with a modern teaching environment that will benefit the island of Mull for years to come.

In Argyll and Bute we have already benefited from Scottish Government funding and have completed 3 purpose built, new replacement schools and carried out a complete refurbishment of a 4th. In other Authorities, they have used funding to build new school Campuses in areas including Peterhead in Aberdeenshire, where they combined 4 schools into the one campus which includes additional community facilities. Within our own Authority we have experience of creating a new Campus on Rothesay and in Oban.

What would this look like for Mull? Tell us what you think!

Date	Time	Stakeholder
Thursday 11 th August 2022	10.15	School Staff
Thursday 11 th August 2022	16.00	PC Chairs Community Council Chairs
Thursday 11 th August 2022	17.00	Parents & Carers
Thursday 11 th August 2022	19.00	Community
w/c Monday 15 th August 2022	Various	Pupils

Contact us:



Mull.campus@argyll-bute.gov.uk



01369 704000



www.argyll-bute.gov.uk



Argyll & Bute Council - Education
Kilmory
Lochgilthead
Argyll PA31 8TE

Mull – Current Catchment Map and Roll Projections



	School Capacity	Capacity % age	2019	2020	2021	2022	2023	2024	2025	2026	2027
Bunessan Primary	46	43%	19	21	11	10	9	11	11	12	12
Bunessan Primary Gaelic			4	3	7	10	11	11	10	12	13
Dervaig Primary	57	33%	25	22	22	19	18	15	11	12	9
Iona Primary	44	34%	18	17	14	15	13	13	12	13	11
Lochdonhead Primary	50	24%	10	10	10	12	14	15	17	14	15
Salen Primary	122	45%	35	29	25	25	31	33	29	34	38
Salen Primary Gaelic			48	45	42	30	33	35	30	35	37
Tobermory Primary	136	53%	62	62	68	72	80	91	91	89	101
Ulva Primary	33	36%	8	8	16	12	11	12	11	12	12
Total Primary			229	217	215	205	220	236	222	233	248
Tobermory High	222	71%	132	136	138	157	171	188	198	201	202
Total Mull Pupils			361	353	353	362	391	424	420	434	450

Contact us:



Mull.campus@argyll-bute.gov.uk



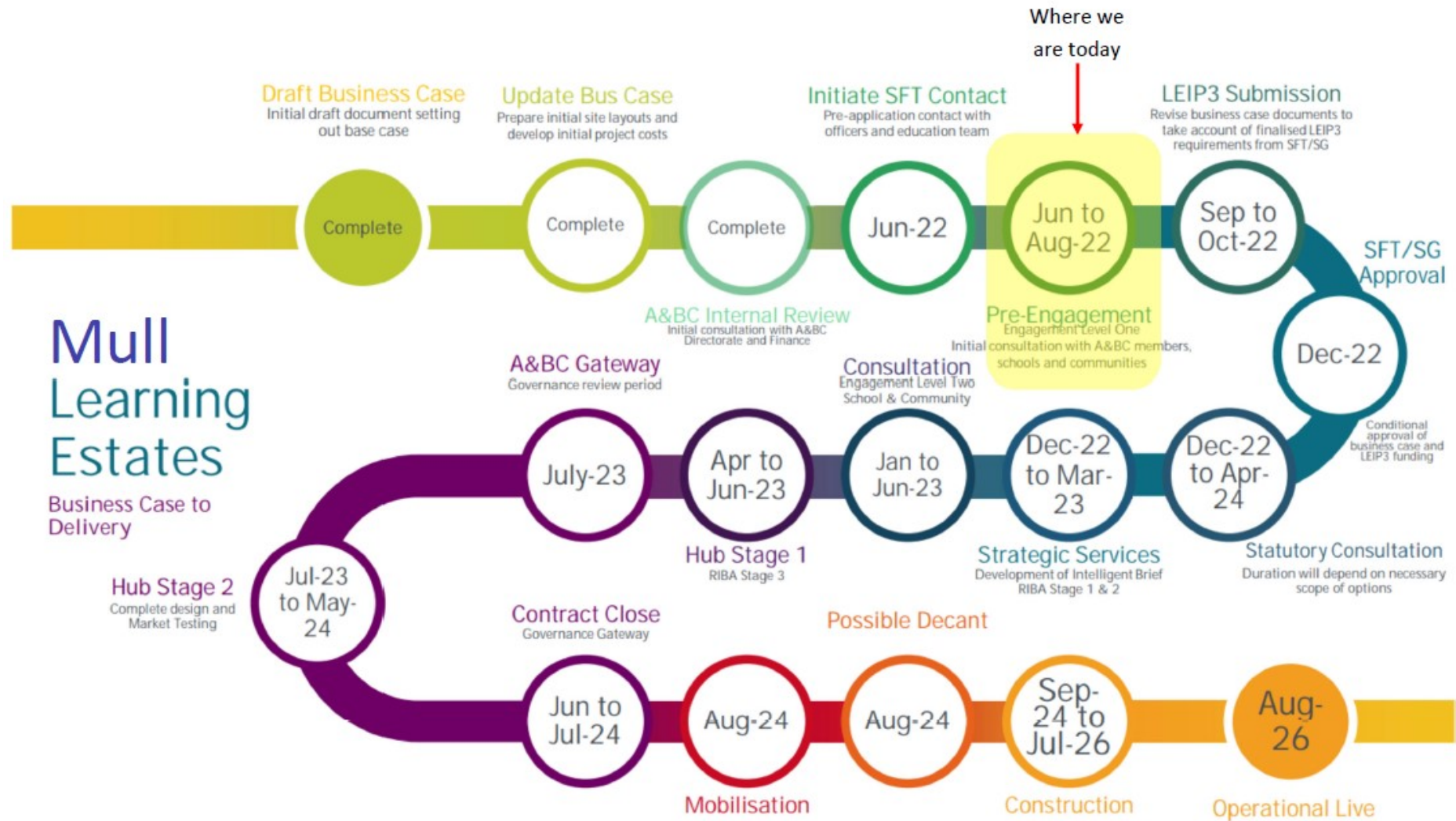
01369 704000



www.argyll-bute.gov.uk



Argyll & Bute Council - Education
 Kilmory
 Lochgilthead
 Argyll PA31 8TE



Contact us:



Mull.campus@argyll-bute.gov.uk



01369 704000



www.argyll-bute.gov.uk



Argyll & Bute Council - Education
Kilmory
Lochgilthead
Argyll PA31 8TE

Do you want us to progress with the Learning Estate Investment Programme funding application for a new campus on Mull?

YES

NO

Contact us:



Mull.campus@argyll-bute.gov.uk



01369 704000



www.argyll-bute.gov.uk



Argyll & Bute Council - Education
Kilmory
Lochgilphead
Argyll PA31 8TE

Contact us:



Mull.campus@argyll-bute.gov.uk



Argyll & Bute Council - Education
Kilmory
Lochgilphead
Argyll PA31 8TE



01369 704000



www.argyll-bute.gov.uk

Contact us:



Mull.campus@argyll-bute.gov.uk



01369 704000



www.argyll-bute.gov.uk



Argyll & Bute Council - Education
Kilmory
Lochgilphead
Argyll PA31 8TE