

1. ALL DIMENSIONS IN METRES UNLESS OTHERWISE NOTED. DO NOT SCALE.
2. ALL LEVELS IN METRES AND REDUCED TO ORDNANCE DATUM UNLESS OTHERWISE NOTED.
3. SUDS FEATURES TO BE CONFIRMED FOLLOWING DETAILED GEOTECHNICAL AND HYDRAULIC INSTIGATION
4. DRAINAGE CONNECTION TO BE CONFIRMED DURING DETAIL DESIGN
5. ALL PROPOSED PIPE WORK ASSUMED TO BE 225mm. TO BE CONFIRMED DURING DETAIL DESIGN.
6. LOCATION OF EXISTING SERVICES TO BE CONFIRMED PRIOR TO DETAILED DESIGN
7. OPERATIONS ARE FULLY DESCRIBED IN SECTION 5 OF SCHEME DESCRIPTION DOCUMENT.
8. THESE DRAWINGS ARE PROVIDED IN ACCORDANCE WITH THE REQUIREMENTS OF SECTION 60 AND SCHEDULE 2 OF THE FLOOD RISK MANAGEMENT (SCOTLAND) ACT 2009 AND PART III OF THE FLOOD RISK MANAGEMENT (FLOOD PROTECTION SCHEMES, POTENTIALLY VULNERABLE AREAS AND LOCAL PLAN DISTRICTS). (SCOTLAND) REGULATIONS 2010.
5. THIS DRAWING IS TO BE READ IN CONJUNCTION WITH 2162

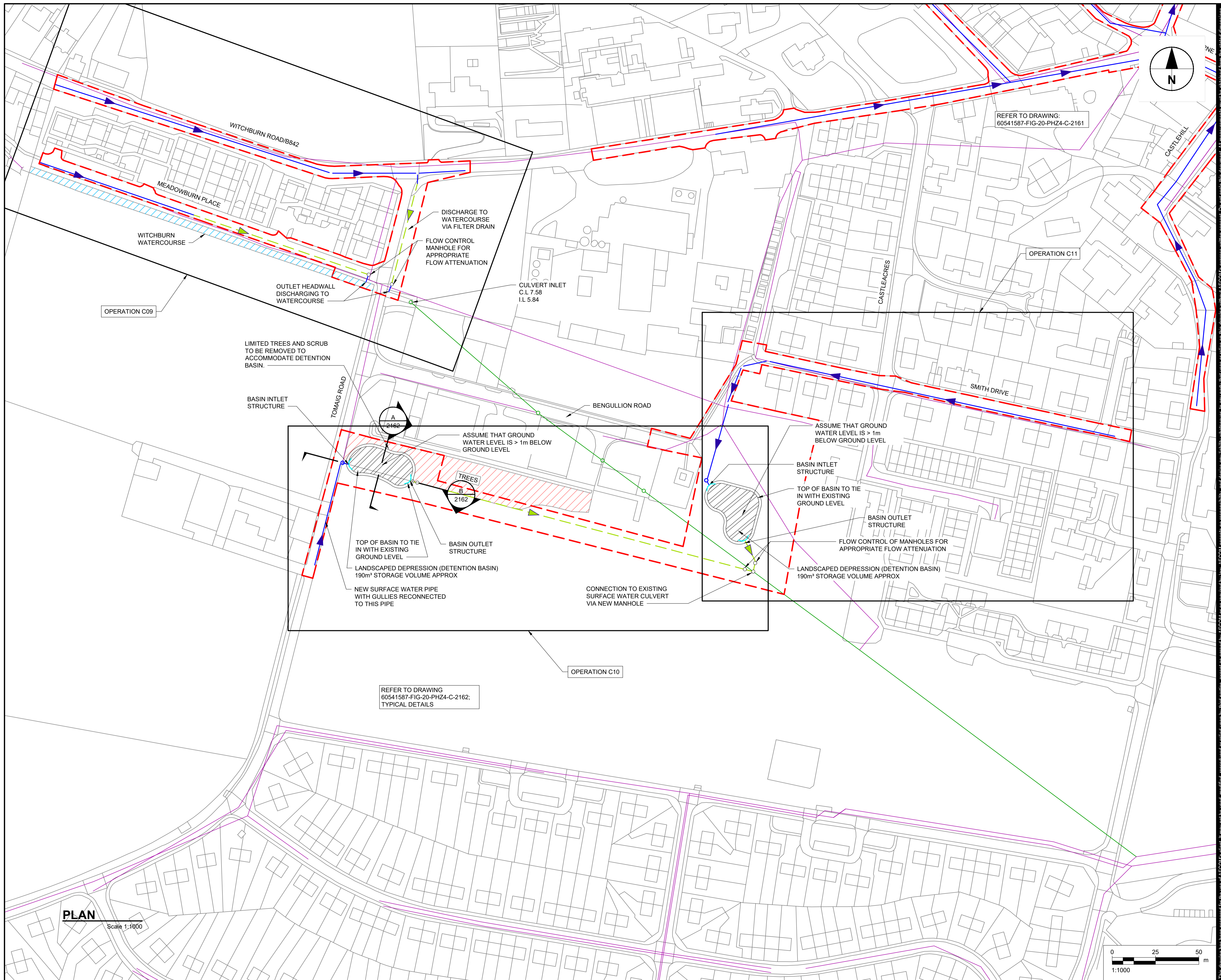
- EXISTING**
- FOUL/COMBINED SEWER NETWORK
 - SURFACE WATER CULVERT
- PROPOSED**
- DETENTION BASIN (INDICATING EXTENT)
 - SURFACE WATER PIPE (ROAD GULLIES TO BE CONNECTED TO NEW PIPE)
 - FILTER DRAIN
 - LIMIT OF LAND AFFECTED BY WORKS
 - DIRECTION OF FLOW

NO	DATE	DESCRIPTION
B	05/07/19	FRM ACT MODIFICATION
A	03/05/19	FRM ACT NOTIFICATION
I/R	DATE	DESCRIPTION

60541587

CAMPBELTOWN SURFACE WATER MANAGEMENT PREPOSALS (SHEET 1 OF 2)

60541587-FIG-20-PHZ4-C-2160



Approved: -
 Checked: -
 Designer: -
 Project Management Initials: -

Last saved by: LEWIS THRELFALL (2019.04.30) Last Plotted: 2020.05.18
 Filename: F:\MARKETING\FLOODING\CAMPBELTOWN BID\CAMPBELTOWN PROJECT FOLDER\CAD\20-SHEETS\60541587-FIG-20-PHZ4-C-2160.DWG

This drawing has been prepared for the use of AECOM's client. It may not be used, modified, reproduced or relied upon by third parties, except as agreed by AECOM or as required by law. AECOM accepts no responsibility, and denies any liability, whatsoever, to any party that uses or relies on this drawing without AECOM's express written consent. Do not scale this document. All measurements must be obtained from the stated dimensions.