

PROJECT

**CAMPBELTOWN
FLOOD PROTECTION
SCHEME**

CLIENT

**ARGYLL & BUTE
COUNCIL**

Helensburgh & Lomond Civic Centre,
38 East Clyde Street,
Helensburgh, G84 7PG





CONSULTANT

AECOM
1 Tanfield
Edinburgh, EH3 5DA
+44 (0) 131 301 8600 tel 8699 fax
www.aecom.com

NOTES

1. ALL DIMENSIONS IN METRES UNLESS OTHERWISE NOTED. DO NOT SCALE.
2. ALL LEVELS IN METRES AND REDUCED TO ORDNANCE DATUM UNLESS OTHERWISE NOTED.
3. OPERATIONS ARE FULLY DESCRIBED IN THE SCHEME DOCUMENTS.
4. THESE DRAWINGS ARE PROVIDED IN ACCORDANCE WITH THE REQUIREMENTS OF SECTION 60 AND SCHEDULE 2 OF THE FLOOD RISK MANAGEMENT (SCOTLAND) ACT 2009 AND PART III OF THE FLOOD RISK MANAGEMENT (FLOOD PROTECTION SCHEMES, POTENTIALLY VULNERABLE AREAS AND LOCAL PLAN DISTRICTS) (SCOTLAND) REGULATIONS 2010.
5. THIS DRAWING IS TO BE READ IN CONJUNCTION WITH 2141-2142

LEGEND

-  CULVERT TO BE ENLARGED
-  CULVERT TO REMAIN UNCHANGED
-  EXISTING MANHOLE LOCATIONS
-  LIMIT OF LAND AFFECTED BY THE WORKS

ISSUE/REVISION

I/R	DATE	DESCRIPTION
A	03/05/19	FRM ACT NOTIFICATION

PROJECT NUMBER

60541587

SHEET TITLE

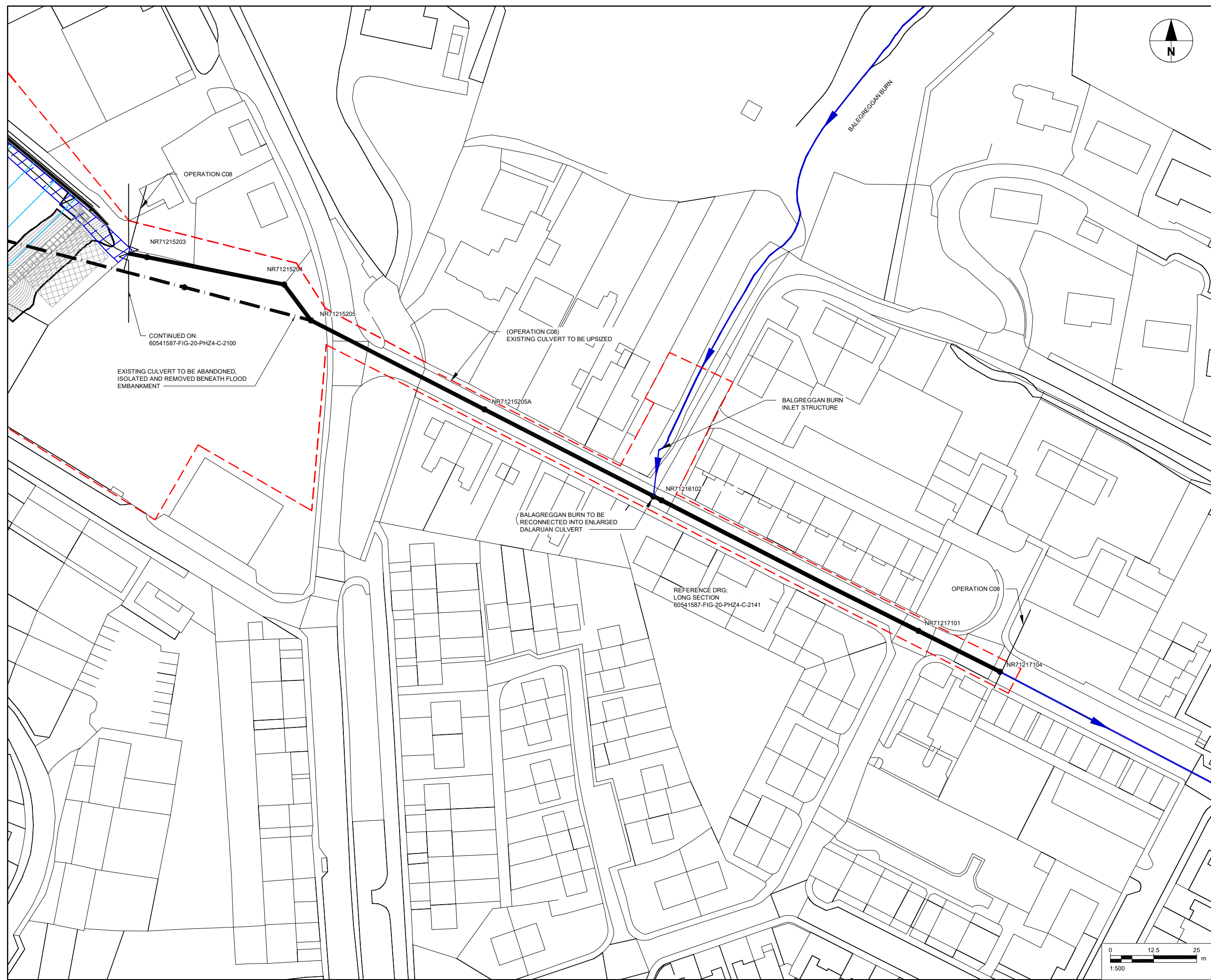
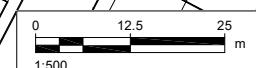
DALARUAN CULVERT
SITE LAYOUT

SHEET NUMBER

60541587-FIG-20-PHZ4-C-2140

Project Management Initials: Designer: LJT Checked: HM Approver: DH

Last saved by: LEWIS THRELFALL (2019-04-30) Last Plotted: 2019-04-30
Filename: F:\MARKETING\FLOODING\CAMPBELTOWN BID\CAMPBELTOWN PROJECT FOLDER\CAD\20-SHEETS\60541587-FIG-20-PHZ4-C-2140.DWG



This drawing has been prepared for the use of AECOM's client. It may not be used, modified, reproduced or relied upon by third parties, except as agreed by AECOM or as required by law. AECOM accepts no responsibility, and denies any liability, whatsoever, to any party that uses or relies on this drawing without AECOM's express written consent. Do not scale this document. All measurements must be obtained from the stated dimensions.