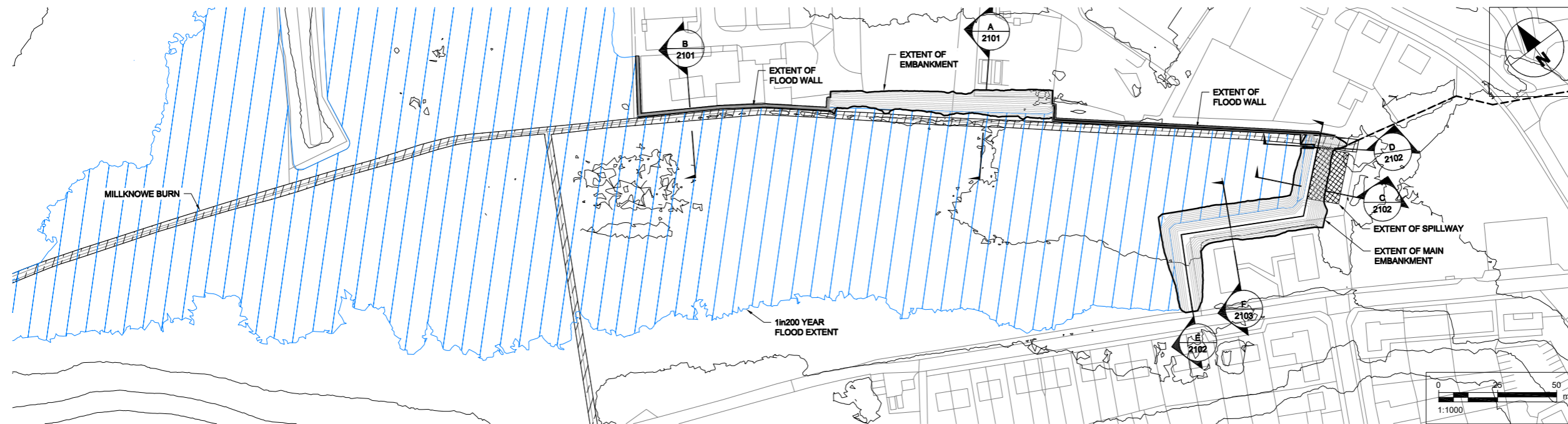
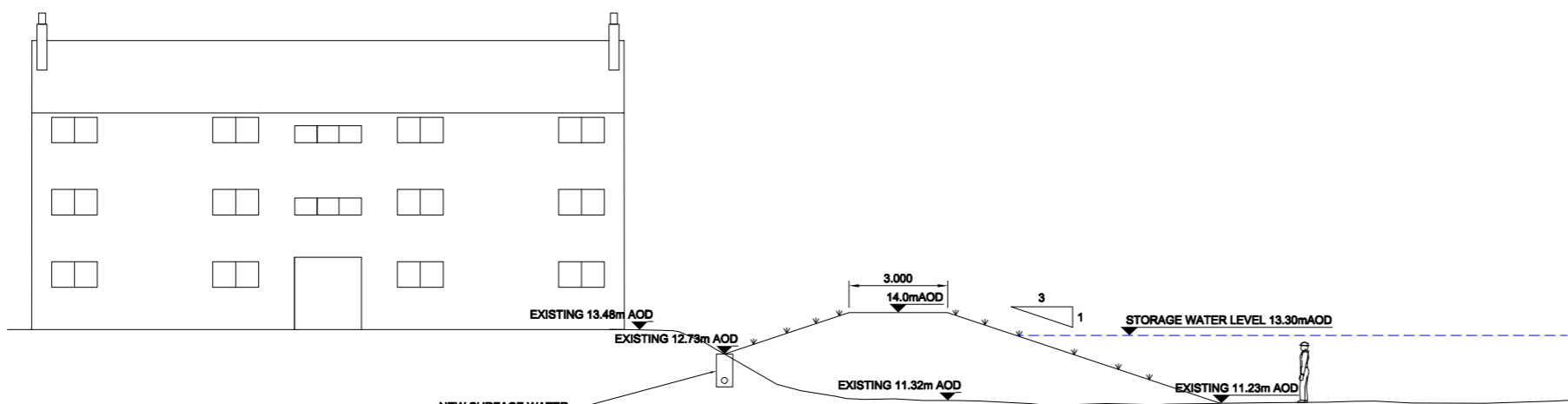


1. ALL DIMENSIONS IN METRES UNLESS OTHERWISE NOTED. DO NOT SCALE.
2. ALL LEVELS IN METRES AND REDUCED TO ORDINANCE DATUM UNLESS OTHERWISE NOTED.
3. EMBANKMENT FILL TO BE DETERMINED FOLLOWING GEOTECHNICAL AND HYDRAULIC DESIGN.
4. MAXIMUM STORAGE WATER LEVEL AND SPILLWAY LEVEL DESIGNED AS 1 IN 200YR FLOOD LEVEL.
5. CREST LEVEL OF EMBANKMENT TAKEN AS 1 IN 10,000 YEAR FLOOD LEVEL WITH 600mm FREEBOARD APPLIED.
6. OPERATIONS ARE FULLY DESCRIBED IN THE SCHEME DOCUMENTS.
7. THESE DRAWINGS ARE PROVIDED IN ACCORDANCE WITH THE REQUIREMENTS OF SECTION 60 AND SCHEDULE 2 OF THE FLOOD RISK MANAGEMENT (SCOTLAND) ACT 2009 AND PART III OF THE FLOOD RISK MANAGEMENT (FLOOD PROTECTION SCHEMES, POTENTIALLY VULNERABLE AREAS AND LOCAL PLANS DISTRICTS) (SCOTLAND) REGULATIONS 2010.
5. THIS DRAWING IS TO BE READ IN CONJUNCTION WITH 2101-2102

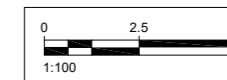
I/R	DATE	DESCRIPTION
A	03/05/19	FRM ACT NOTIFICATION
I/R	DATE	DESCRIPTION



SITE LAYOUT
Scale 1:1000



F SECTION THROUGH EMBANKMENT
2103 Scale 1:50



This drawing has been prepared for the use of AECOM's client. It may not be used, modified, reproduced or relied upon by third parties, except as agreed by AECOM or as required by law. AECOM accepts no responsibility, and denies any liability whatsoever, to any party that uses or relies on this drawing without AECOM's express written consent. Do not scale this document. All measurements must be obtained from the stated dimensions.