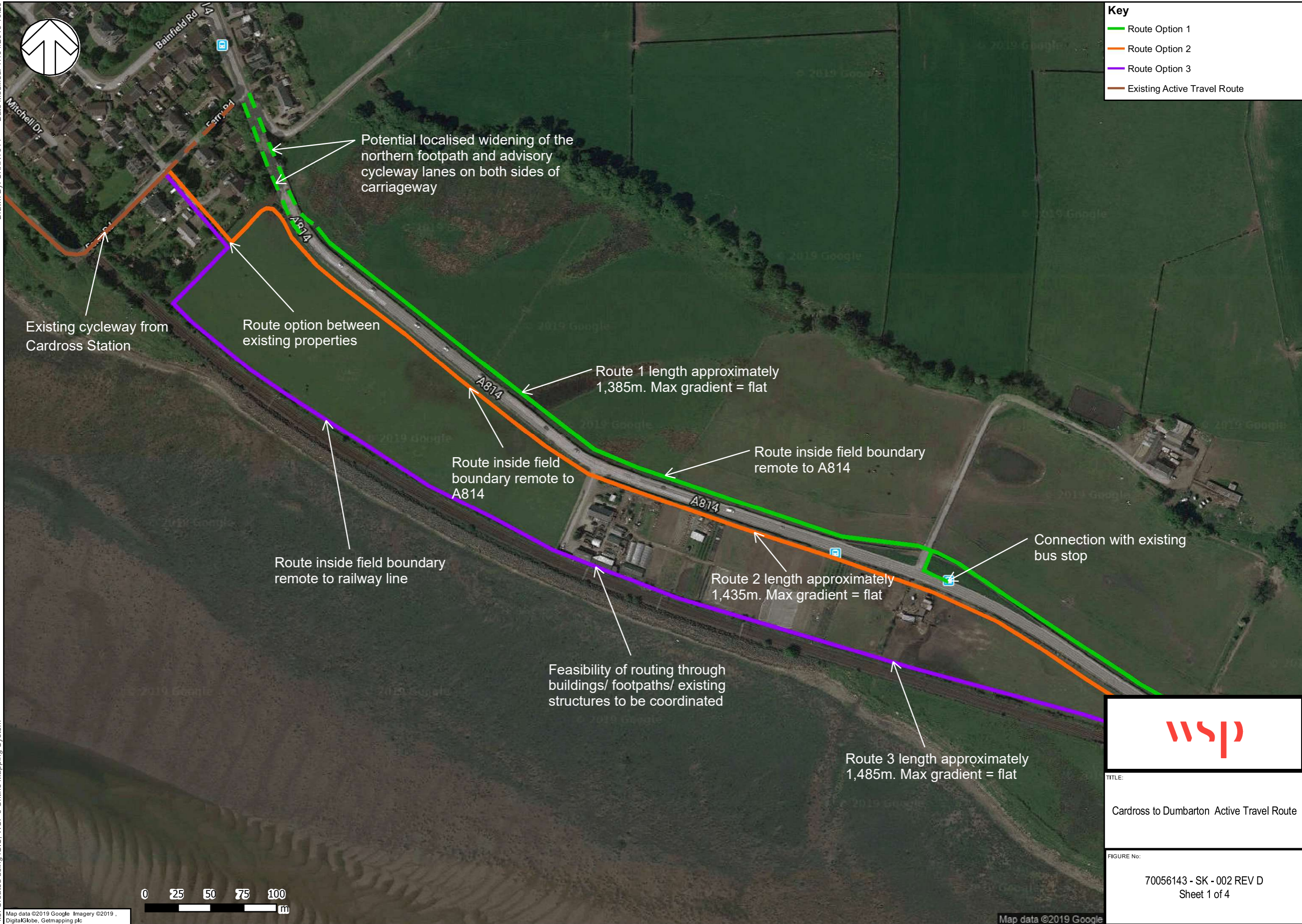




**Key**

- Route Option 1
- Route Option 2
- Route Option 3
- Existing Active Travel Route



Existing cycleway from Cardross Station

Route option between existing properties

Potential localised widening of the northern footpath and advisory cycleway lanes on both sides of carriageway

Route 1 length approximately 1,385m. Max gradient = flat

Route inside field boundary remote to A814

Route inside field boundary remote to A814

Route inside field boundary remote to railway line

Route 2 length approximately 1,435m. Max gradient = flat

Connection with existing bus stop

Feasibility of routing through buildings/ footpaths/ existing structures to be coordinated

Route 3 length approximately 1,485m. Max gradient = flat



TITLE:  
Cardross to Dumbarton Active Travel Route

FIGURE No:  
70056143 - SK - 002 REV D  
Sheet 1 of 4

