

## Clachan to Tayinloan

9 miles, 14.5 km allow 4-5 hours  
- walk in either direction

2020 - Check all bus times with operator

### From Campbeltown

**Tayinloan to Clachan** (South to North)  
**Out (No. 926)** Depart Campbeltown, Bus Terminal near Aqualibrium, 08.30 arrive Tayinloan, Post Office 09.00

**Return (No. 449)** Depart Clachan 15.56 / 17.53 arrive Campbeltown 17.05 / 18.38

### Clachan to Tayinloan (North to South)

**Out (No. 449)** Depart Campbeltown, Bus Terminal near Aqualibrium, 08.30 arrive Clachan 09.13

**Return (No. 926)** Depart Tayinloan, Post Office 16.32 / 18.06 arrive Campbeltown 17.06 / 18.37

### From Tarbert

#### Tayinloan to Clachan (South to North)

**Out (No.926)** Depart Tarbert, Bus Terminal, 09.25 arrive Tayinloan, Post Office 10.07

**Return (No. 449)** Depart Clachan, 16.43 arrive Tarbert 17.01

#### Clachan to Tayinloan (North to South)

**Out (No. 449)** Depart Tarbert, Bus Terminal, 09.25 arrive Clachan 09.43

**Return (No. 926)** Depart Tayinloan, Post Office, 16.32 / 18.06 arrive Tarbert 17.01 / 18.37

Timetables can be viewed at bus stops or online

[www.westcoastmotors.co.uk](http://www.westcoastmotors.co.uk)

[www.travelinescotland.com](http://www.travelinescotland.com)

**Taxis** – Taxis available in Tarbert and Campbeltown

### Refreshments

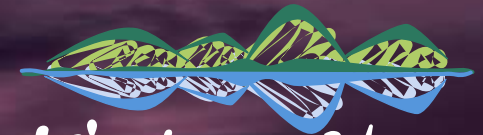
Clachan – the Filling Station on the main road five minutes' walk from the bus stop in the village  
Tayinloan - there is a café at the ferry terminal allow 15mins to walk to the bus stop outside the Tayinloan Stores which sells refreshments



Ronachan House



Clachan old church



# Kintyre Way

take a walk on the wild side

## Section 3 Clachan to Tayinloan

### EXPLORE

the changing shoreline and take time out to visit the standing stones above Ballochroy

### ENJOY

the fantastic views over to Islay, Jura and Gigha

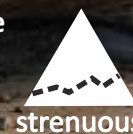
### DISCOVER

Ronachan House and Clachan village  
otters, seals, herons and oystercatchers

#### Clachan to Tayinloan

following the shore offering fantastic views over to Islay, Jura and Gigha. The walking here is predominately on the shore with the sea only a few steps away. Tayinloan has a small selection of accommodation

Mostly shore  
but with  
uneven and  
muddy  
sections



strenuous

9 miles  
14.5 km  
Allow  
4.5 hrs

Sunset over Jura



The beach at Tayinloan

Photo © Steve Partridge (cc-by-sa/2.0)

Standing stones at Ballochroy



KNOW THE CODE  
BEFORE YOU GO  
outdooraccess-scotland.scot

## The Kintyre Way

Along 100 miles over 4-7 days you will discover hidden coves, deserted beaches, woods & forests, castles & fishing villages and an abundance of wildlife. Stretching from Tarbert in the North to Machrihanish in the South, the seven graded & way-marked sections offer a variety of walking terrain from serious hiking to gentle rambles [www.thekintyreway.com](http://www.thekintyreway.com)

### Where to go outdoors

Argyll's interactive map of paths with links to information to help you plan your next walk or ride.

[www.argyll-bute.gov.uk/where-go-outdoors](http://www.argyll-bute.gov.uk/where-go-outdoors)



Clachan

Tayinloan

### Section 3: Clachan to Tayinloan

— Kintyre Way



From the village Tayinloan follow the footway, uphill beside the A83 for a little over a mile before turning down to Ronachan House. From here the path follows the Atlantic coast for about three miles, occasionally joining the road. There are fantastic views of Jura, Isla and Gigha, look out for seals and sea birds. Further south you walk away from the road to Rhunahairne Point. Continue south to Tayinloan opposite the Isle of Gigha where there is a café and a range of excellent accommodation.



0 0.5 1 Miles  
© Crown copyright and database right 2020 All right reserved. Ordnance Survey Licence number 100023368