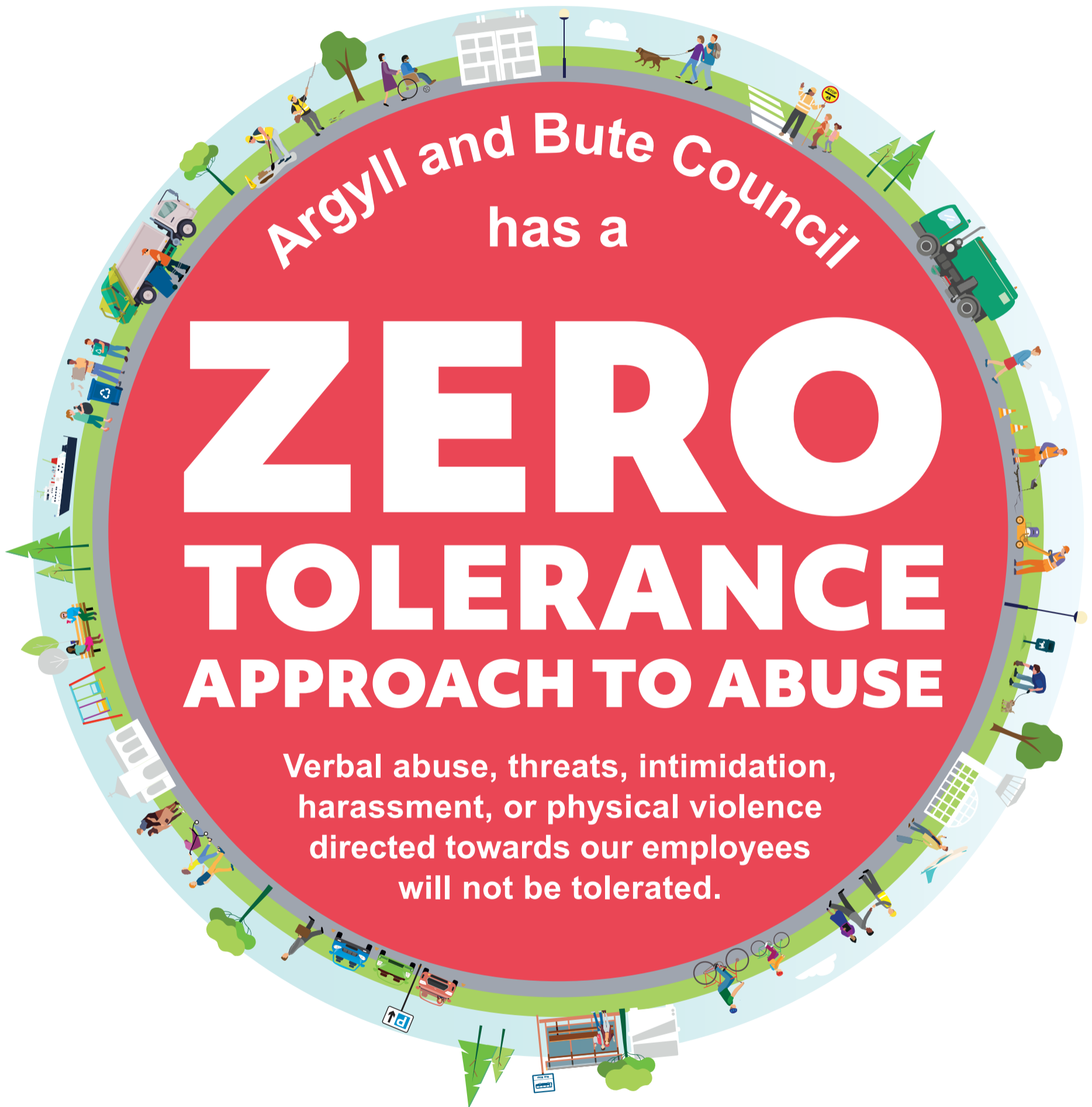


# Working together



Our employees deliver services that local communities depend upon every day. They have the right to do that safely and without fear of aggression.



Abusive behaviour is unacceptable in any circumstance. Where required, incidents will be reported to the police and legal action may be taken. Anyone who engages in abusive or aggressive conduct towards council staff may be asked to leave council premises, refused service, or have their access to council officers restricted. We ask all members of the public to treat our staff with courtesy and respect, for everyone's benefit.



Bute • Helensburgh • Islay • Oban • Mull • Campbeltown • Iona • Dunoon • Tiree • Lochgililhead • Seil ...