

## LPP newsletter March 2026

t minus 4 months.....

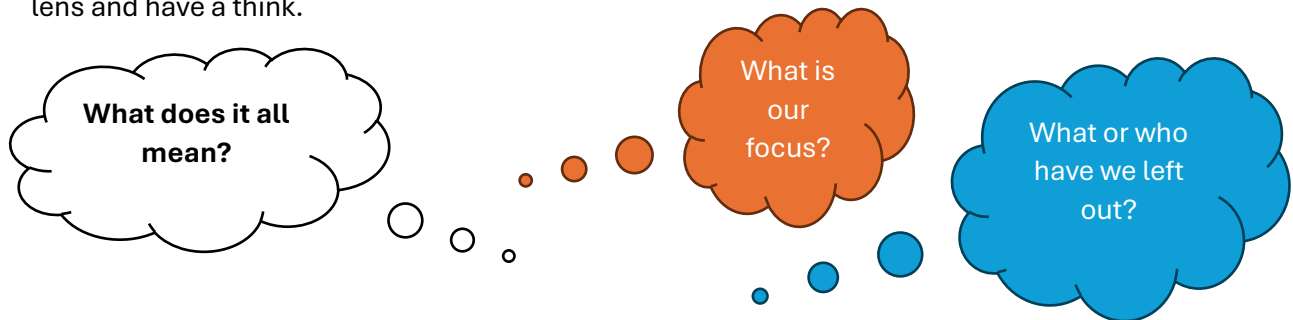


- Time to step back and ponder – the bigger picture (Some resources and quotes).
- Links to Ardentenny LPP
- Links to Balfron LPP
- LDP 2
- Placecheck
- Next meeting look at timeline incl the 28 days

### TIME TO STEP BACK AND PONDER:

Now that we are three months away from the 28 day pre-validation deadline, it might be time to look and see what you've got and locate it in context.

For this we've pulled together some quotes and external resources to help you pull back the lens and have a think.



SCDC's LPP info is here: [Understanding Local Place Plans | SCDC - We believe communities matter](#) and this seems helpful:

*“link aspiration and need for development. Plans should address the needs of the local area to make it a good place to live in. They should look at what the needs are and then set out what they think would help address those needs e.g. safe path development to encourage people to travel by bike, scooter, wheelchair or on foot. It also helps to make sure that proposals are realistic and deliverable. It's good to include some “big thinking” but that should be based on evidence and need – you need to show why something is both wanted and needed, rather than just wanted. Where possible, we also think that your plan should look to address inequalities and improve the lives of the most vulnerable in the community.”*

PAS says – be confident in your local knowledge:

*“While it isn't ever desirable to pre-empt what a community will say, many community leaders and community bodies already have a unique insight into existing community needs and aspirations because they are already at the heart of local relationships and conversations. An awareness of the general trends and issues that are already bubbling up in your community can*

*give an indication of the process or plan to use to best capture your community's needs and desires for the future."* [PAS-LPP-Guide-Overview.pdf](#)

APIC (A Place in Childhood) offers some advice to planners about engaging with children. Relevant for us all in our whole community engagement:

*"A Mindset Shift: From Teaching to Listening*

*A common pitfall in engaging children and young people is assuming the role is primarily to educate them about planning. While some contextual learning is helpful, the real objective is to support them to give their views. Education will happen organically through participation. The focus should remain on listening, understanding, and incorporating what they have to say into plans. This approach also helps professionals grow in their understanding of how children and young people use and experience local environments – an essential foundation for inclusive place-making." From: [How to Engage Children and Young People in Local Development Plans | A Place in Childhood](#)*

AN LPP IN FOCUS:

**Ardentinny Community Council** came to the last LPP Community of Practice and shared their process with us. Their plan is here: [ArdentinnyLPP-Final\\_compress.pdf](#)

You can see how they build on previous knowledge and consultation, how they developed their plan, from an overarching vision into a set of actions and into proposals for consideration in the new LDP. Remember you don't have to map your whole area -just the things that matter to your community, and enable you to thrive going forward.

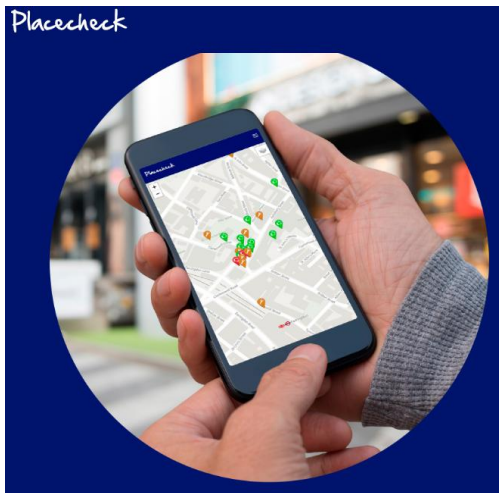
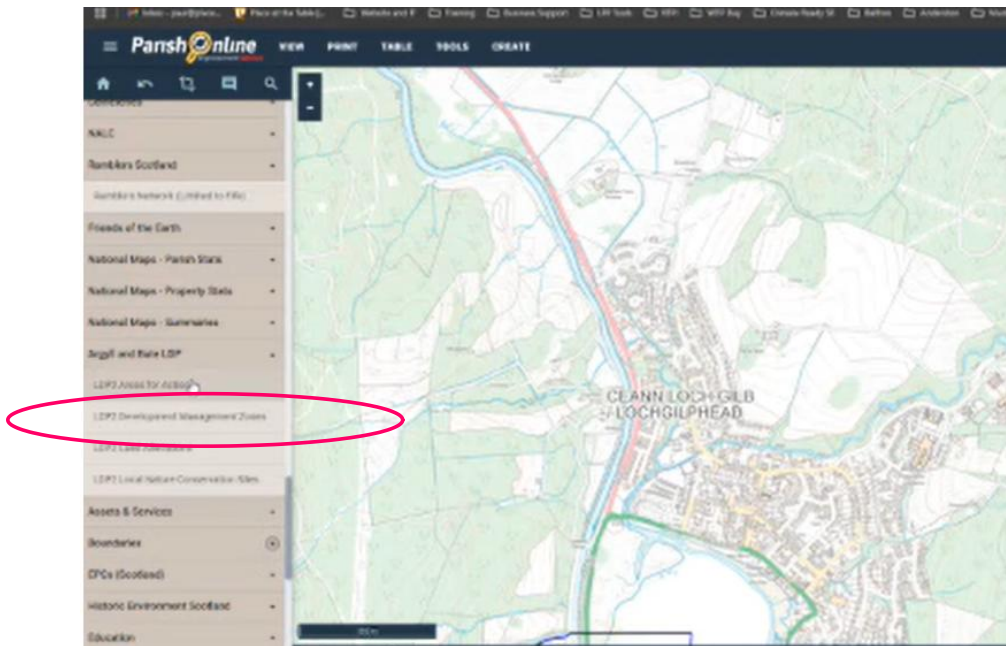
ANOTHER LPP TO LOOK AT:

**Balfron Community Council** also attended our LPP Community of Practice to describe how they used PlaceCheck to provide very accurate detail on community needs. You can see their effective use of maps here: [Balfron\\_Information-Notice\\_LPP\\_V1.3\\_Apr25-compressed.pdf](#)

LINK TO LDP 2

The Local Development Plan, whose proposals you are looking to vary (with justification) is found here: [Local Development Plan 2 | Argyll and Bute Council](#)

LDP 2 is also available on [Community Map Scotland](#), with all the available layers to play about with- a really useful resource. (minute 43 on mapping video [Local Place Plan webinar SD 480p](#))



### Why do a Placecheck?

The simple idea of Placecheck is that the people who live, work or play in an area are the experts on that place.

Doing a Placecheck is the quickest way of collecting information about a place and starting the process of making change happen.

A Placecheck can be carried out for a street, a park, a neighbourhood, a town centre, a transport corridor or any other place. You can use the Placecheck web app on your smartphone, tablet or computer, and either at home or walking about the area. This builds up a set of markers on an online map and a downloadable online resource. It records the information and opinion on a place, its strengths and weaknesses, and what needs to be done.

The app is easy to use and there is nothing to download. The organiser of the Placecheck simply creates a map of the area and shares the link which takes users to it.

Chris Sharpe and Rob Cowan, who developed the original Placecheck concept joined the call on 12<sup>th</sup> February and presented an excellent demo of the tools. You can create your own account on [Placecheck](#) to use this interactive tooling and you can easily get in touch with the team to discuss your project or if you have any questions on [support@placecheck.info](mailto:support@placecheck.info)

**Thank you to the guest speakers.**

The next LPP Community of Practice (CoP) will be held on **Thursday March 12<sup>th</sup> at 2pm**. Email [Ailie.law@argyll-bute.gov.uk](mailto:Ailie.law@argyll-bute.gov.uk) to get the joining link. This will be a chance to consider the steps towards submission for validation.

- Timetable – the 28 days that your Local Place Place will be shared with your neighbouring Community Council and Elected Members
- What items do we need to include?
- Where is the best place to include these items so that the Validation team can easily find them and tick them off?
- What others have learnt.

Look forward to a useful session and your input will be so helpful.