

NOTICE TO MARINERS No.01/26

CAMPBELTOWN 05.01.25

Mariners are advised that the 2 FIXED RED VERTICAL LIGHTS (2 F.R(vert)5m4M) sited upon Campbeltown New Quay, at the entrance to the inner harbour within Campbeltown Loch are faulty. Perceived issues relate to an intermittent power fault, We are currently awaiting a lighting technician to attend and resolve the issue. Mariners are therefore requested to navigate and manoeuvre with caution when transiting Campbeltown Loch especially during the hours of darkness from dusk until dawn or during periods of restricted visibility.

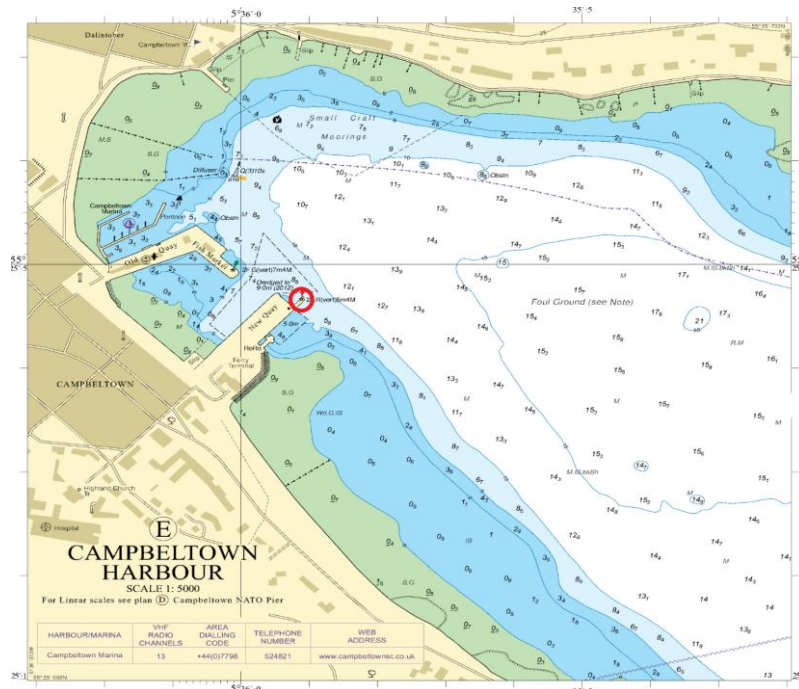


FIG: RED CIRCLE DENOTES POSITON OF LIGHTS

Further Information can be obtained by contacting:

Stephen Scally Harbour Master - Mob 07825732862
E-mail: stephen.scally@argyll-bute.gov.uk

John Willis Assistant Harbour Master - Mob 07500294920
E-mail: john.willis@argyll-bute.gov.uk

**STEPHEN SCALLY
HARBOUR MASTER**

Harbour Office, Ferry Terminal Building, New Quay, Campbeltown, Argyll, PA28 6BA
Tel: 01586 552552 Email: campbeltownharbour@argyll-bute.gov.uk