

## Argyll and Bute Local Place Plan e-Newsletter

August 2025

This newsletter aims to update those who are creating their LPP or those who are still thinking about it. We hope you find it useful. For any queries on the LPP process that are not answered by the [Local Place Plans | Argyll and Bute Council](#) webpage, please contact [localplaceplans@argyll-bute.gov.uk](mailto:localplaceplans@argyll-bute.gov.uk) or look at the [FAQ](#).



### JULY 2026 DEADLINE – OR IS IT?

#### Local Place Plans (LPPs) and Local Development Plan 3 (LDP3)

Some communities are working on or thinking about creating a Local Place Plan (LPP). You can find more information on the Council's [Local Place Plan webpage](#).

LPPs that are registered by the Council will be taken into account when

preparing the next Local Development Plan (LDP3) but to do so LPPs must be submitted by a deadline.

#### New Deadline for LPP Submission:

The original deadline of June 2025 has been extended to **July 2026**, to coincide with the end of the LDP3 Evidence Report Gate Check process. To guarantee your LPP is taken into account when producing LDP3, it must be submitted *and registered* before this process ends.

Since registration takes time, it's best to submit your LPP as early as it is possible to do so **before July 2026**.

LPPs submitted after the Gate Check may still be taken into account, but this cannot be guaranteed.

You can find the full LDP3 timetable in the April 2025 Development Plan Scheme (DPS), available on the [LDP3 webpage](#). Please check the webpage regularly for DPS updates.

Contact:

If you have questions, please email: [localplaceplans@argyll-bute.gov.uk](mailto:localplaceplans@argyll-bute.gov.uk)

#### Important Note:

*If your LPP is entirely within Loch Lomond and the Trossachs National Park, contact the National Park Authority. If it covers areas of Argyll and Bute both inside and outside the National Park, contact both the Council and the National Park Authority.*

With this reminder, is a suggestion that you remember to incorporate into your revised timeline:

- A period for the Council Planning team to validate your submission – say 3 weeks or so.
- The statutory notice period of 28 days.
- A period following that to take on board any feedback you may have received during that time – assuming you decided to follow best practice and recirculate the draft LPP to your community during the 28 day statutory notice period.

### FREE ONLINE TRAINING:

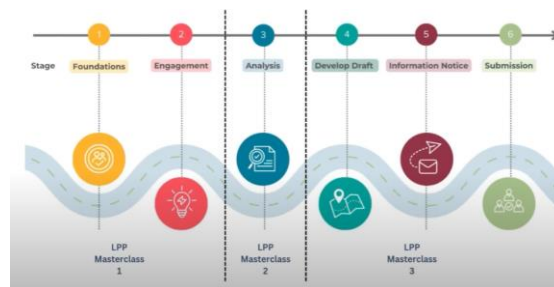
If you have new volunteers coming forward or now considering that an LPP might be of value, then please look at our [LPP Training webpage](#) where we have uploaded all the videos from our Seminars and the subsequent Masterclasses.

There were **4 Webinars** covering:

- Overview and Validation of your LPP
- Engaging your Community for your LPP
- Creating the Maps for your LPP
- Climate Change and LPPs

There were **3 Masterclasses** going into more depth:

- Integrating LPPs within the LDP
- Analysing Survey Data
- Presenting LPPs Effectively



### An LPP Community Of Practice for You.

We have put a Teams meeting into our calendars for any person working on an LPP, anyone wanting to share what they learned or any staff member with expertise to share. We hope it will be an interesting drop-in to raise issues, get peer learning and support and help you with your motivation.

**Thursday 2<sup>nd</sup> October at 10:30am - [Join the meeting now](#)** ←

All welcome -if it's a good one, we will run another in the New Year.

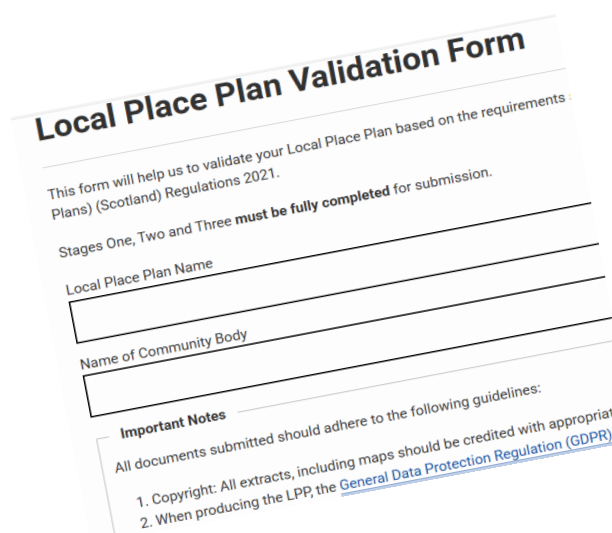
### CHECK YOUR CONSTITUTION – DOES IT MEET THE REQUIREMENT?

If you are **not** a Community Council submitting your LPP, best to check that your constitution meets the requirements. You should meet the definition of a *community-controlled body* as defined by the Community Empowerment Act. If you're not sure, contact:

[communitydevelopment@argyll-bute.gov.uk](mailto:communitydevelopment@argyll-bute.gov.uk) to talk it over.

## NEW! UPDATED VALIDATION FORM:

The [Local Place Plan Page](#) now has a downloadable and printable checklist and an online Place Plan form. It is recommended that you use the checklist to carry out all instructions and actions and prepare all documents before opening and completing the online form.



**Local Place Plan Validation Form**

This form will help us to validate your Local Place Plan based on the requirements: Plans) (Scotland) Regulations 2021.

Stages One, Two and Three **must be fully completed** for submission.

Local Place Plan Name \_\_\_\_\_

Name of Community Body \_\_\_\_\_

**Important Notes**

All documents submitted should adhere to the following guidelines:

1. Copyright: All extracts, including maps should be credited with appropriate
2. When producing the LPP, the [General Data Protection Regulation \(GDPR\)](#)

## MAPPING TOOLS

Maps, like many other documents, are copyrighted pieces of information.

You must, therefore, get permission to use any part of them and state this on your LPP submission.

Community Councils can apply for and get a license to use Ordnance Survey(OS) data with the PGSA Licence: Register here: [Public Sector Geospatial Agreement \(PGSA\) | OS](#) . You can then use Community Map Scotland free, for one year.

Green Maps are Open Source and the basic package is free.

For more links and learning on Mapping, go to the [LPP training page](#).



## PRO-TIP:

In order to prove that you have sent the required notifications, we suggest a screenshot of the email that you sent, with the date and addressee clearly visible.

With many, many thanks for all your volunteering and hard work in preparing an LPP for your area. If you need any help or ideas at all, please get in touch – we're happy to help!

[localplaceplans@argyll-bute.gov.uk](mailto:localplaceplans@argyll-bute.gov.uk)