

NOTICE TO MARINERS

| | |
|-----------------|------------------------------------|
| Harbour / Pier: | Lismore Point / Port Appin, Argyll |
| Number: | 01 |
| Date of issue: | 13.10.2025 |

Mariners are advised that hydrographic survey works will be conducted by Aspect Land & Hydrographic Surveys Ltd adjacent Lismore Point, Argyll & approaches.

The works are due to commence 16.10.2025 for a period of 1 to 2 days and comprise of fixed sensors being deployed from the survey vessel "Coastal Sensor". VHF radio watch on channels 12 & 16 will be monitored throughout the works.



FIGURE 1 - SURVEY EXTENTS: LISMORE POINT, ARGYLL

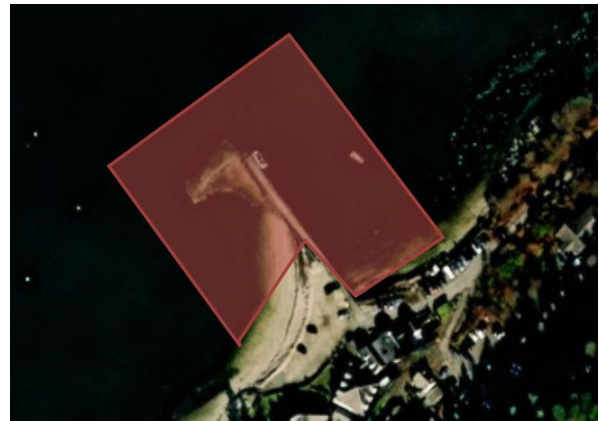


FIGURE 2 - SURVEY EXTENTS: PORT APPIN, ARGYLL

The vessel will be restricted in its ability to manoeuvre and will display the appropriate lights and shapes. Other vessels are requested to pass at a safe speed and provide a minimum clearance of 500m (COLREGs Rule 16 & 18) during marine operations.

Further information can be obtained from the Harbour Master on 01631 562892, VHF ch12.



Harbourmaster's Office, Oban North Pier, Oban, Argyll, PA34 5QD
Tel: 01631 562892 Email: obanharbour@argyll-bute.gov.uk