

Helensburgh Former Skating Pond - Consultation Feedback

Thank You for Your Responses

A. The most comments suggested clearing vegetation and clutter from the pond to give more open water. This may impact the biodiversity by reducing the numbers of plants and invertebrates. If too little vegetation is removed then the pond cannot be used for model boating or skating if it freezes. A balanced solution may be possible. In all options we must consider the maintenance operations needed to keep the pond usable.

B. If the pond can be cleared enough to allow model boating a simple launching platform could be installed.

C. A deck could be constructed to allow access for pond dipping. This could have an interpretation board highlighting what might be found.

D. It is recognised that the paths are degrading and need to be resurfaced to maintain access for all. The deck is failing and a new design for the path at this point is required. Along the path existing furniture is rotting and could be repaired or replaced.

E. The main entrance and car park are in need of improvement. Traffic speeds on the main road are too high, so traffic calming measures could be considered. This would help pedestrian access to the site. The car park layout is inefficient and not lined, making it a free for all. This also could be improved. All entrances and the overall boundary could be improved by better fencing and gates.

The information gathering questionnaire was completed by 415 users of the skating pond. Further consultations with other stakeholders helped to crystallise the ideas of how the pond could be improved.

The diagram below indicates the key areas where people suggested improvements could be made. We hope you recognise some of the things that you said should be improved.

What actually gets built will depend on a number of factors including engineering, ecology, maintenance, access and cost. Any work will not happen immediately and could be phased over a number of years.

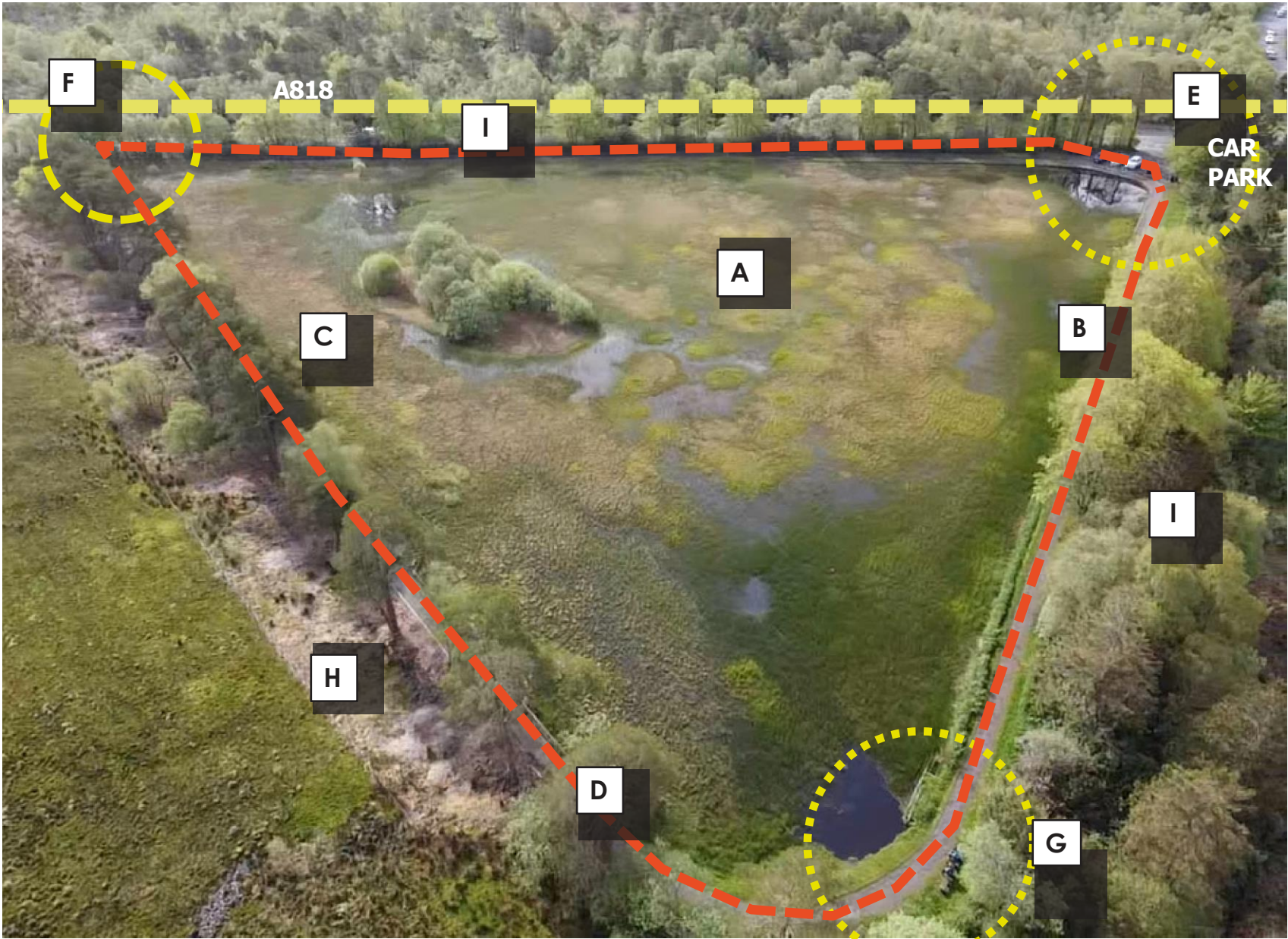
Options will be assessed using an evaluation matrix to see what variants give best value and fulfil the most aspirations.

F. The existing fence is broken at this corner by walkers on the John Muir Way. Putting a new gate and crossing point could make the pond more accessible. Better signage and installation of artwork could give the site a stronger identity.

G. The existing access point from the reservoir is steep, uneven and dangerous. It leads to a narrow timber bridge. It is currently dangerous and needs to be improved. This area also demonstrates the random mix of fencing around the site, often untidy and sometimes hazardous.

H. Continue to control the invasive Rhododendron and plant new Scots pines to ensure longevity while keeping the open views to the hills.

I. Look to remove the invasive Rhododendron along the roadside, but devise some way of incorporating another screen for the passing traffic. On the reservoir side selective clearance of invasive species could allow better long views across the adjacent water.



Aerial view of the existing pond showing areas where people suggested improvements could be made.

If you would like to make further comments or feel we have missed anything you have said. Please email us at:

hello@scottsimmons.co.uk

Thank You