

# Community-led Plans

A COMMUNITY DEVELOPMENT  
TEAM PRODUCTION



# To help you:

▶ PADLET



▶ Acronyms:

- ▶ CAP-Community Action Plan
- ▶ LPP – Local Place Plan
- ▶ LDP- Local Development Plan
- ▶ CPP- Community planning Partnership
- ▶ ACPG- Area Community Planning Group
- ▶ NPF4 – National Planning Framework 4



# WHAT IS A COMMUNITY-LED PLAN?

- ▶ Community-led Action Plan (CAP)
- ▶ Local Place Plan (LPP)



# Why should you do one?

- ▶ Benefits of a community-led plan
  - ▶ Evidence
  - ▶ Decision making
  - ▶ Partnerships
  - ▶ Consensus and mandate
  - ▶ Representation and Ownership
  - ▶ Responding to the big challenges
  - ▶ New voices



# And why you shouldn't...

- ▶ An onerous process – particularly LPP
- ▶ Need buy-in from your community
- ▶ Geographic area has more than one community
- ▶ Just apply for planning permission
- ▶ A CAP is often enough
- ▶ PAS: LPPs may not be considered for another 5 years.
- ▶ Spatial awareness in communities can be poor

# Gaining influence – CAP or LPP

## Policy 52 – Community Plans, Local Place Plans and Locality Plans

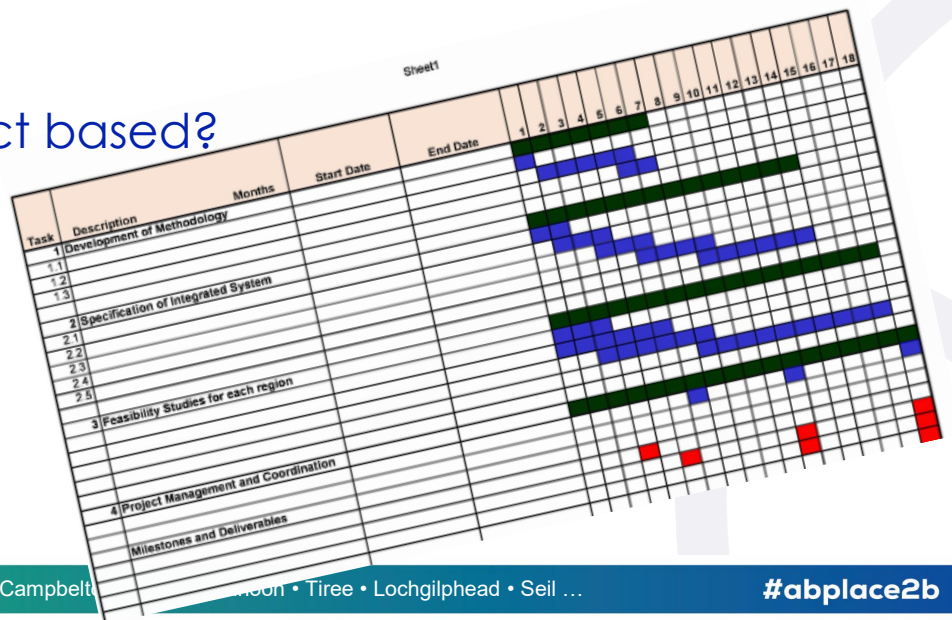
The planning authority may approve Community plans, Local Place Plans and Locality Plans, or elements thereof, for use as a material planning consideration where the criteria below are met:

- The plan has been produced by a community body<sup>1</sup>
- It accords with National Planning Framework 4, the adopted Local Development Plan 2 and any relevant legislation;
- It has been informed by a place based assessment of the area and provides justification for any development or improvement proposals;
- It includes a spatial map that shows the community's aspirations, including any development or improvement proposals in suitable detail and clarity;
- It is demonstrated that the plan has been subject to suitable levels of community engagement and how any responses to the engagement have been taken into account in the production of the plan.
- It contains an outline delivery strategy setting out what resources, services and funding are required to deliver any development or improvement proposals and who will be responsible for managing such developments.



# Who should prepare a CAP or LPP ?

- ▶ What type of body ?
  - ▶ Stakeholders for consultation
  - ▶ Partners for delivery
- ▶ What is your purpose?
- ▶ Land use based or project based?
- ▶ Capacity ?



# How ? (Finding Out)



## 1. Finding out



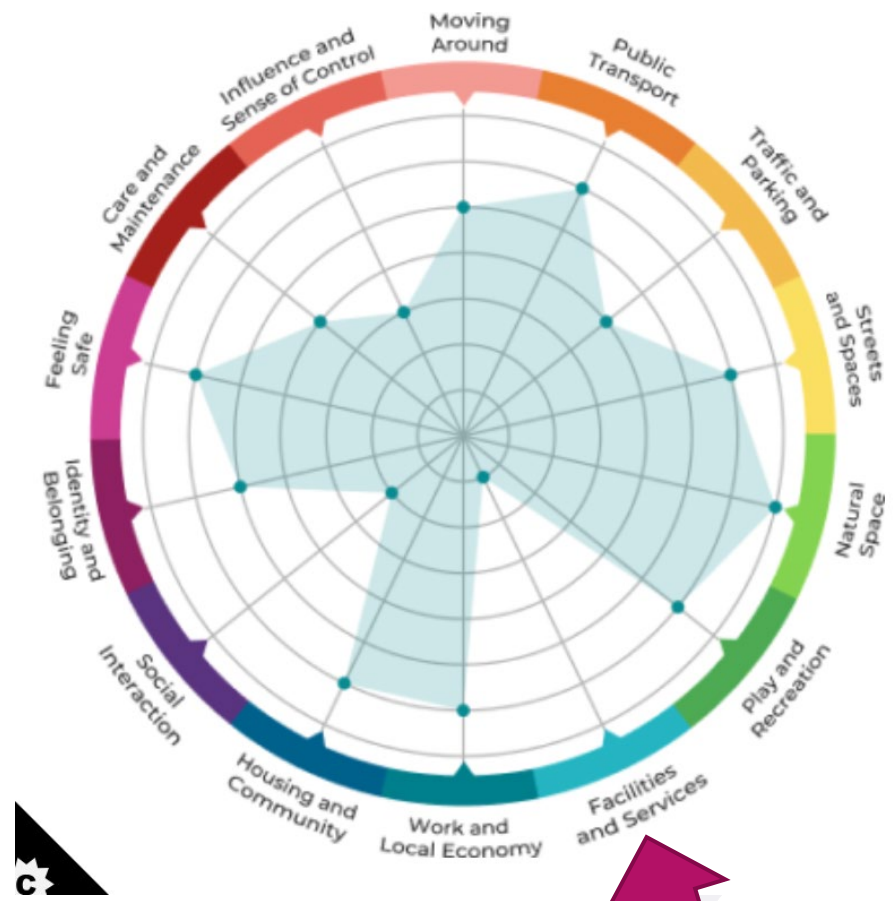


# ACTIVITY- design a research plan in 5 mins!

- ▶ Select some of these and put them in order- and justify your plan!

<b>Focus group with local businesses</b>	<b>Visit local groups esp. protected characteristics</b>	<b>Other focus group- eg young farmers</b>	<b>Online survey</b>	<b>Paper survey</b>
<b>World café event at central venue</b>	<b>Young people's reference group</b>	<b>Suggestion tree at community lunch group</b>	<b>Stall outside local shop</b>	<b>Suggestion box at key locations</b>
<b>Post cards from the Future</b>	<b>Website and blog</b>	<b>Social media</b>	<b>Stalls at local events with several ways of input</b>	<b>Leaflets and posters with QR codes</b>

# Place Standard tool



# Break time.....



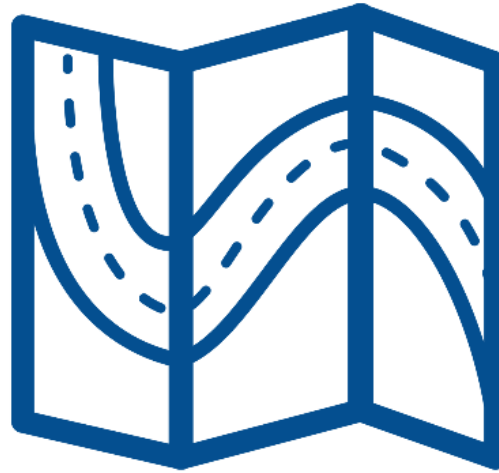
# How (Reaching Out)



## 2. Reaching out



# How (Planning ahead)



## 3. Planning ahead



# How (Keeping on Track)



## 4. Keeping on track



# What to include ?

- ▶ Climate change/resilience
- ▶ Equalities
- ▶ Young people
  
- ▶ Maps,
- ▶ Photographs
- ▶ Charts and graphics
- ▶ Video.





# Deciding what's right for you?

## ▶ LPP or CAP ?

## Consultant or DIY?

**Between 2021 and 2023, we've been working hard to prepare and deliver two community-led plans here in Stratherrick and Foyers.**

The first is our **Community Action Plan** setting out our overall strategy and priorities for the future.

The second is our **Local Place Plan** which shows how the Community Action Plan will land on the ground across our area.

Together, the two plans provide our agenda for the future - for community action, for investment and for public services and planning policy.

COMMUNITY ACTION PLAN

LOCAL PLACE PLAN

# Overview comparison

## CAP

- ▶ Community-led
- ▶ Community engagement
- ▶ Identify community issues and solutions
- ▶ List actions
- ▶ May be taken into consideration

## LPP

- ▶ Community-led
- ▶ Community engagement
- ▶ Propose areas in community for development
- ▶ Map potential sites and link to govt policy/goals
- ▶ Must be taken into consideration – (tho not guaranteed adoption)

# Local examples

**GLENORCHY & INNISHAIL**  
Community Action Plan 2021-2026

**WEST KINTYRE COMMUNITY COUNCIL**  
COMMUNITY ACTION PLAN 2017-2023

**Campbeltown Community Summary**  
2022-2026

Logos: SKDT (South Kintyre Development Trust), InspirAlba (Care Connect)

TYPING	OBJECTIVES	ACTIONS	PRIORITY	BY WHOM	THRESHOLD
<b>Health and Well-being</b>	<ul style="list-style-type: none"> <li>Ensure everyone has all ability access to physical and social activities throughout the area.</li> </ul>	<ul style="list-style-type: none"> <li>Seek to open new all ability tracks and paths into the interior of the peninsula by encouraging all future woodland developers to include all ability access tracks as part of their planning application.</li> </ul>	3	WKCC, AAB, BUSTRANS	2-4yrs
		<ul style="list-style-type: none"> <li>Support further development of the Kintyre way</li> </ul>	2	WKCC, WKWT	2-4yrs
		<ul style="list-style-type: none"> <li>Support the development of Taynton playing fields into an all age recreational facility</li> </ul>	2	WKCC, WKWT, WKDT, Residents' Association	2-4yrs
		<ul style="list-style-type: none"> <li>Maintain current GP services at Munsdale</li> </ul>	1	WKCC, LPO, AAB, Munsdale patient focus group	ongoing
		<ul style="list-style-type: none"> <li>Support local voluntary and food sector groups operating social activities within the area.</li> </ul>	2	WKCC, WKWT, WKDT	ongoing
	<ul style="list-style-type: none"> <li>Inform community of changes in Health and Social Care services and how to access</li> </ul>	<ul style="list-style-type: none"> <li>Regular newsletters distributed throughout the area, GP surgery and posted on web sites</li> </ul>	2	LPO, WKCC, AAB, patient focus group	ongoing
	<ul style="list-style-type: none"> <li>Advocate events throughout the area</li> </ul>	<ul style="list-style-type: none"> <li>Encourage local groups to advertise events throughout the area not just locally</li> </ul>	3	LOCAL GROUPS	ongoing

May 2017 [www.wkcc.org.uk](http://www.wkcc.org.uk)



# How to make the most of your Plan

- ▶ Sending it to stakeholders
- ▶ Local folk
- ▶ Steering group or Action Network to track
- ▶ Link to CPP/ABOIP
- ▶ Link to Climate/child poverty plans etc
- ▶ Send to funders as part of your evidence

# Any questions ?



# How can we help?

- ▶ Both with design and delivery:
  - ▶ Design of a research process
  - ▶ Assistance with finding data
  - ▶ Independent facilitation of community engagement events
  - ▶ Feedback on (near) final draft and liaison with pertinent council depts
  - ▶ Participation in Action Network to help progress
  - ▶ [communitydevelopment@argyll-bute.gov.uk](mailto:communitydevelopment@argyll-bute.gov.uk)
  - ▶ [ldp@argyll-bute.gov.uk](mailto:ldp@argyll-bute.gov.uk)
  - ▶ PAS; SCDC etc