

## APPENDIX 1

### ***Argyll and Bute Council***

Comhairle Earra Ghàidheal agus Bhòid

Executive Director Douglas Hendry



***Kilmory,  
Lochgilphead,  
Argyll,  
PA318RT  
Telephone: 01546 605522  
Our Ref:***

**E-mail: [annette.trevelyan2@argyll-bute.gov.uk](mailto:annette.trevelyan2@argyll-bute.gov.uk)**

**Council Website: [www.argyll-bute.gov.uk](http://www.argyll-bute.gov.uk)**

### **Minard Primary School**

Dear Consultee,

### **Review of Education Provision Notice and Summary of Proposal for closing Minard Primary School Schools Consultation (Scotland) Act 2010**

#### **Background**

Argyll and Bute Council, through its Education Service, aims to realise ambition, excellence and equity for all.

The Council is consulting on a proposal to close Minard Primary School. This notice provides a summary of a proposal that you may have an interest in or are required to be notified of, giving you key information about the proposal.

The Council is conducting a public consultation process. This will commence on 15<sup>th</sup> June 2023 and will conclude on 13<sup>th</sup> September 2023. This is the period within which you will be able to make written representations to the Council in respect of the proposal. If you wish your view to be taken account of in the consultation exercise you must submit your written representation within this period. This notice and summary provides further information on where a full copy of the proposal may be obtained or referenced and also advises on how you can make written representations to the Council.

The Council will hold a meeting where officers will be able to provide information on the proposal. The details of the public meeting are contained in this notice and summary.

It is important that everyone we are consulting tells us what they think of the proposal. Please read this notice and summary and then consider the contents of the proposal document. You can then tell us what you think of the proposal by making written representation and/or by attending the public meeting. This notice and summary tell you how to do that.

## **The Proposal**

It is proposed that education provision at Minard Primary School be discontinued with effect from 31<sup>st</sup> May 2024. The catchment areas of both Lochgilphead and Furnace Primary Schools shall be extended to include the current catchment area of Minard Primary School. The proposal is that children living in the north section of catchment area from Achagoyle Bay to Blackstone Bay attend Furnace Primary (with that section of Minard's catchment area being subsumed by Furnace Primary School) and children in the south section of the catchment area from Achagoyle Bay to Kilmichael Beg attend Lochgilphead Joint Campus (with that section of Minard's catchment area being subsumed by Lochgilphead Primary School).

## **Reasons for this proposal**

This is considered to be the best option to address the reasons for the proposals which are;

- Minard Primary School has been mothballed for over four years. The school condition will deteriorate with limited budgets for maintenance. The school roll is zero and is not predicted to rise in the near future.
- Along with several other rural Councils, Argyll and Bute is facing increasing challenges in recruiting staff. At the time of writing there are 8.59 fte primary vacancies for Head Teachers and teachers in Argyll and Bute.
- Whilst the school is mothballed, the building is deteriorating with limited budgets for maintenance.

## **The Council's education strategy Our Children Their Future**

Together we will realise ambition, excellence and equality for all.

- Raise educational attainment and achievement for all,

- Use performance information to secure improvement for children and young people,
- Ensure children have the best start in life and are ready to succeed,
- Equip young people to secure and sustain positive destinations and achieve success in life,
- Ensure high quality partnership working and community engagement,
- Strengthen leadership at all levels.

## Alternatives to the Proposal

The following alternatives to the proposal were considered at the preliminary pre-consultation stage of this process;

- a) Re-open Minard Primary School,
- b) Continued Mothballing of Minard Primary with the pupils zoned to Lochgilphead and Furnace Primary Schools,
- c) Close Minard Primary School and realign its catchment area to Lochgilphead and Furnace Primary Schools (the Proposal).

Written representations may be made on those alternatives as well as on the proposal.

Written representations on the proposal may suggest other alternatives to the proposal.

## What will we do?

We will consult with people by:

- Providing a notice of the consultation and a summary of the proposal to the relevant consultees **this is that notice and summary**
- Placing an advert in the local press
- Putting information on our website <https://www.argyll-bute.gov.uk/schoolconsultations-and-proposals>
- Holding a public meeting to explain the proposal
- Ask parents, carers, children, young people, teachers, support staff and others to tell us what they think of the proposals.

## What to do now?

- Please read the full proposal document
- Please attend the Public Meeting which will be held on 29<sup>th</sup> August 2023 at 7.00pm in Minard Primary School.
- Let us know what you think by:

Letter to: Education Services  
School Consultations  
Argyll & Bute Council  
Argyll House  
Alexandra Parade  
Dunoon  
PA23 8AJ

Returning the attached response sheet by post or by;

Email to: [argyllhoukereception@argyll-bute.gov.uk](mailto:argyllhoukereception@argyll-bute.gov.uk)

### **What next?**

Whilst the Council is engaging in a consultation process in relation to this proposal that does not mean that the proposal will go ahead. It does mean that the Council is engaging in a consultation process to seek your views on the proposal.

All the points raised during the consultation will be carefully considered and Elected Members will then decide if the plan should go ahead.

If the suggestion goes ahead, any children from Minard Primary School catchment area would be educated at Lochgilphead Primary School or Furnace Primary School.

Please note that this summary document is for convenience only. Full details of the consultation can be obtained from:

- Council Headquarters, Kilmory, Lochgilphead, Argyll, PA31 8RT
- Education Offices, Argyll House, Dunoon, Argyll, PA23 8AJ
- Lochgilphead Library, Lochgilphead Community Centre, Manse Brae, Lochgilphead, PA31 8XQ
- Lochgilphead Service Point, 1A Manse Brae, Lochgilphead, PA31 8RD
- Lochgilphead Primary School, Manse Brae, **Lochgilphead**, Argyll PA31 8SY
- Furnace Primary School, Furnace, By Inveraray, Argyll PA32 8XU
- Minard Village Hall, Minard, By Inveraray, Argyll PA32 8YB
- It is also available electronically via our website:  
<https://www.argyll-bute.gov.uk/school-consultations-and-proposals>

Yours faithfully,

**DOUGLAS HENDRY**

Executive Director with responsibility for Education

**Argyll and Bute Council Education**



**RESPONSE FORM**

I wish my response to be considered as confidential with access restricted to Elected Members and Council Officers of Argyll and Bute Council.

<b><u>Proposal</u></b>	
It is proposed that: Education provision at Minard Primary School be discontinued with effect from 31 <sup>st</sup> May 2024. The catchment areas of Lochgilphead and Furnace Primary Schools shall be extended to include the current catchment area of Minard Primary School – to the extent that the north section of Minard’s catchment area (from Achagoyle Bay to Blackstone Bay) will be subsumed by Furnace Primary School; and the south section of Minard’s catchment area (from Achagoyle Bay to Kilmichael Beg) is subsumed by Lochgilphead Primary School.	
<b>This part of the form must be completed for a valid response:</b>	
Name: (please print)	Address:
	Post Code:
I agree/do not agree (delete which does not apply) that my response can be made publicly available	
Signature:	Date:

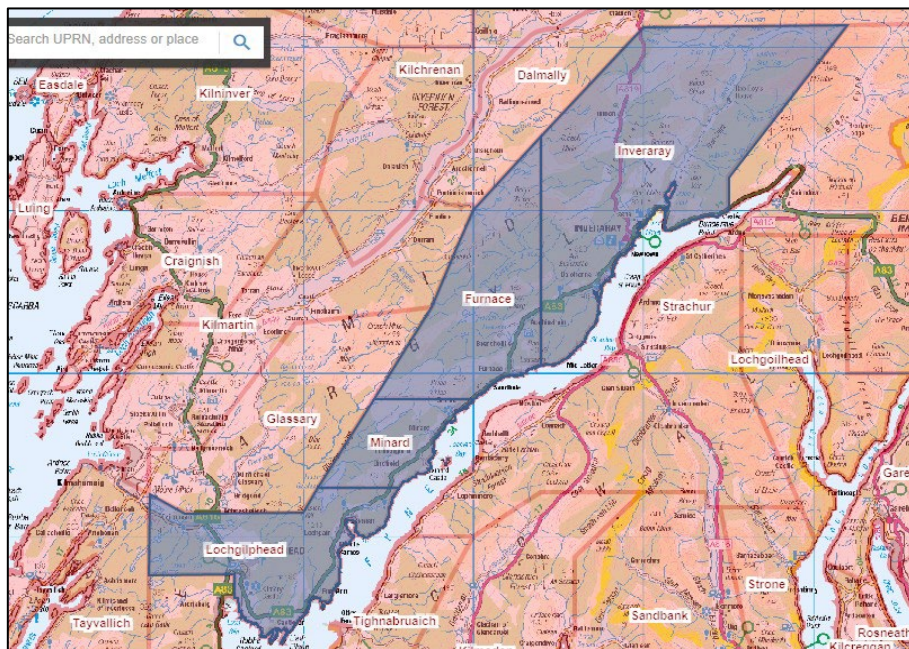
**YOUR INTEREST: (please tick)**

Parent	<input type="checkbox"/>	Child / Young Person	<input type="checkbox"/>	Staff	<input type="checkbox"/>	Other *	<input type="checkbox"/>
Elected Member / MSP / MP	<input type="checkbox"/>	Member of Community Council	<input type="checkbox"/>		<input type="checkbox"/>		<input type="checkbox"/>
*Other: (please specify)							

**Please state your views on the proposal (continue overleaf if necessary)**

## APPENDIX 3 - MAPS

### MAP OF CURRENT PRIMARY SCHOOL CATCHMENT AREAS



## MAP OF PROPOSED MINARD CATCHMENT SUBSUMED TO FURNACE AND LOCHGILPHEAD PRIMARY SCHOOLS



— Existing Catchment Area - Minard

■■■■ New Catchment boundary:

North of Achagoyle Bay to Furnace Primary.

South of Achagoyle Bay to Lochgilphead Joint Campus.