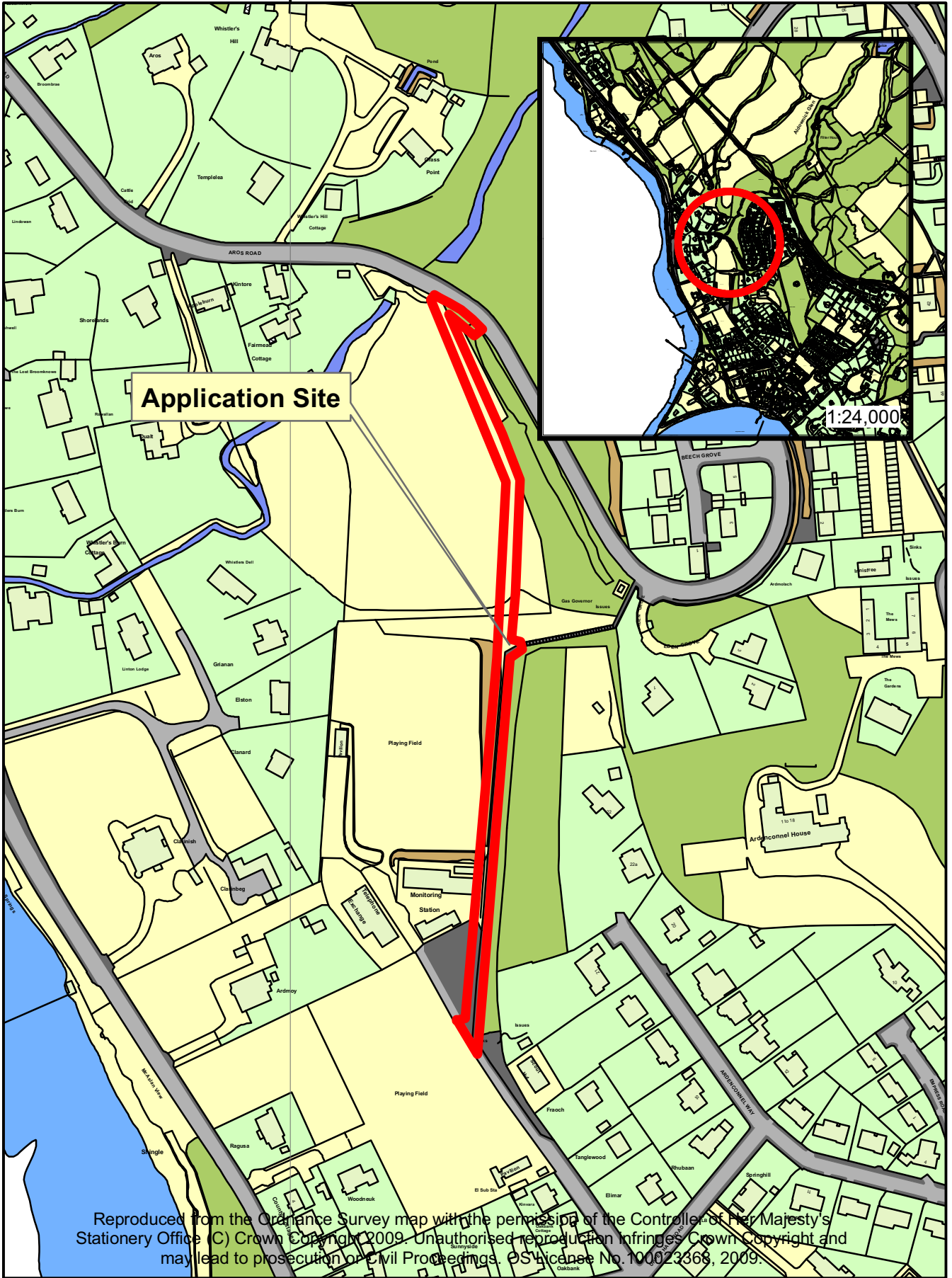


226600



**Application Site**

1:24,000

Reproduced from the Ordnance Survey map with the permission of the Controller of Her Majesty's Stationery Office (C) Crown Copyright 2009. Unauthorised reproduction infringes Crown Copyright and may lead to prosecution or Civil Proceedings. OS Licence No. 100023368, 2009.

226600



**Location Plan relative to  
Application Ref: 11/02051/PP**

Date: 18.01.2012

Scale: 1:2,500

