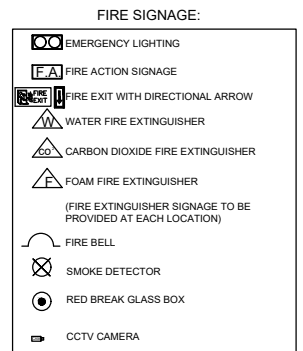


GONDOLA HEIGHT:
 EXISTING - 1480MM
 PROPOSED - 1480MM



- NOTES:**
- FIRE FIGHTING EQUIPMENT & ALL OF THE REQUIREMENTS OF THE FIRE SERVICE WILL BE INCORPORATED & WILL BE PROVIDED TO COMPLY WITH THE EUROPEAN STANDARDS
- No. BSEN3 & BS7863
- ALL WALL PERIMETER FIXTURES TO A HEIGHT OF 2.1M
 - ALL FLOOR DISPLAYS TO A HEIGHT OF 1.5M
 - COUNTER HEIGHT 965MM

- FIRE STANDARDS:**
- FIRE SAFETY RELATED SIGNS AND NOTICES ARE TO THE HEALTH AND SAFETY (SAFETY SIGNS & SIGNALS) REGULATIONS ACT 1996. THOSE THAT COMPLY TO BS 5499, PART 1, 1990 ALSO COMPLY.
 - ILLUMINATED "EXIT" SIGNS ARE TO CONFORM TO BS2590
 - FIRE FIGHTING EQUIPMENT IS TO COMPLY WITH EUROPEAN STANDARDS BS EN3 AND BS 7863

NOTE:
 TOTAL ALCOHOL DISPLAY AREA: 11.74000m²
 25.00 LINEAR METRES

LOCHGILPHEAD ARGYLL STREET
 8 Argyll Street, Lochgilphead, Strathclyde PA31 8LZ

3741-SK3-BWSL-001

SALES FLOOR

RETAIL SALES AREA 1122 Sq. Ft.

Scale: 1:100 only scaled on **A3**

Morrisons
 Daily

Wm MORRISON SUPERMARKETS LTD
 Property & Development Division
 Hilmore House, Gain Lane, Bradford, BD3 7DL
 Tel: 0845 611 6000