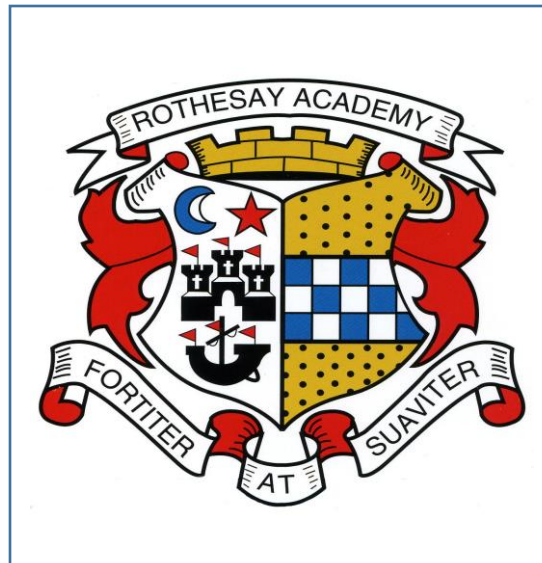




ARGYLL AND BUTE COUNCIL SECONDARY SCHOOL ATTAINMENT REPORT AREA COMMITTEE



NAME OF SCHOOL: Rothesay Academy

DATE OF REPORT: June 2023

School name: Rothesay Joint Campus

School Address: High Street, Townhead, ROTHESAY, PA20 9JH

Head Teacher: Louise C Nicol

Context of the school

Rothesay Joint Campus is a fully comprehensive, non-denominational 3-18 learning establishment which serves the local communities on the Isle of Bute. The campus, which is located in the town of Rothesay, was opened in 2007 and is made up of Rothesay Pre 5 Early Years Unit, Rothesay Primary School and Rothesay Academy. Other primary schools in the cluster who feed into Rothesay Academy are North Bute Primary School and St Andrew's (RC) Primary School. There are 598 children across the campus (290 in secondary).

We have a teaching staff compliment of 25.6FTE. The Senior Leadership Team comprises of The Head Teacher, two Depute Head Teachers, four Principal Teachers of Curriculum, 2 Principal Teachers of Guidance and a Principal Teacher of Support (3-18)

Our pupil equity fund spending for session 2022-23 was £34 000. We use this money to support our most vulnerable children and their families.

Our SIMD profile is as follows: SIMD 1-3 = 67.1%, SIMD 5 = 19.7%, SIMD 7 = 5.3%, SIMD 9 = 7.9%

In recent years we have played a major role in the resettlement of Syrian refugee families as well as a small number of Ukrainian and Sudanese refugee families. This has been a very successful and rewarding initiative for our school community.

S3 ACEL Attainment in Literacy and Numeracy

School	Level	% Achieved				
		Reading	Writing	L&T	Literacy	Numeracy
	Third Level or better	88.2	82.4	82.4	74.5	94.2
Argyll & Bute	Third Level or better	88.3	87.0	88.2	83.9	87.8
	Fourth Level	64.7	49.0	70.6	47.1	48.1
Argyll & Bute	Fourth Level	49.8	47.6	51.5	45.9	57.6

S3 ACEL – Gaelic (if relevant)

School	Level	% Achieved				
		Gaelic Reading	Gaelic Writing	Gaelic L&T		
	Third Level or better					
	Fourth Level					

Evaluative Comment – Areas of Strength in BGE Attainment:

Numeracy – level 3 above authority average

Literacy – level 4 above authority average

Reading, Writing, Talking & Listening – all above authority average at level 4

Reading in line with authority average

Evaluative Comment – Areas for Development in BGE Attainment:

Level 4 Numeracy below authority average –

- Review of learning & teaching approaches
- SEAL Training (Recovery programme)
- Work with primary to exemplify and moderate level 3

Level 3 Writing & Literacy

- focus on literacy homework which targets writing skills
- Focussed literacy period in S1 & S2
- Working with primaries on challenging level 3 learners in P6/7
- Moderation
- Tracking & monitoring

National Qualifications – Pass rates

NATIONAL QUALIFICATIONS	2021-22 A-C				
	Number of Presentations	Number Attaining A-C	% Attaining A-C	Argyll and Bute % Attaining A-C	National % Attaining A-C
Advanced Higher	19	14	73.7	85.50%	82.60%
Higher	103	73	70.9	80.90%	80.30%
National 5	272	211	77.6	79.70%	81.60%

Level/Stage 2022	A	B	C	D	No Award	Grade A-B	Grade A-C	Grade A-D
National 5	(Nat. 41.20% A&B 35.40%) RA 26.47%	(Nat. 23.00% A&B 25.57%) RA 27.21%	(Nat. 17.43% A&B 18.69%) RA 23.90%	(Nat. 10.79% A&B 12.73%) RA 13.97%	(Nat. 7.60% A&B 7.60%) RA 8.46%	(Nat. 64.20% A&B 61%) RA 53.68%	(Nat. 81.60% A&B 79.70%) RA 77.57%	(Nat. 92.4% A&B 92.4%) RA 91.54%
S4	29.78%	29.33%	23.56%	12.89%	4.44%	59.11%	82.67%	95.56%
S5	13.16%	29.33%	28.95%	21.05%	18.42%	31.58%	60.53%	81.58%
S6	0.00%	11.11%	11.11%	11.11%	66.67%	11.11%	22.22%	33.33%
Higher	(Nat. 36.50% A&B 35.60%) RA 17.48%	(Nat. 24.32% A&B 24.56%) RA 23.30%	(Nat. 19.49% A&B 20.8%) RA 30.10%	(Nat. 11.74% A&B 12.61%) RA 20.39%	(Nat. 7.90% A&B 6.50%) RA 8.74%	(Nat. 60.90% A&B 60.00%) RA 40.78%	(Nat. 80.3% A&B 80.90%) RA 70.87%	(Nat. 92.10% A&B 93.50%) RA 91.26%
S4	33.33%	33.33%	33.33%	0.00%	0.00%	66.66%	100%	100%
S5	18.92%	22.97%	28.38%	18.92%	10.81%	41.89%	70.27%	89.19%
S6	11.54%	26.92%	30.77%	26.92%	3.85%	38.46%	69.23%	96.15%
Advanced Higher	(Nat. 35.00% A&B 30.80%)	(Nat. 26.28% A&B 26.09%)	(Nat. 21.35% A&B 28.99%)	(Nat. 11.27% A&B 11.59%)	(Nat. 6.20% A&B 3.20%)	(Nat. 61.2% A&B 56.7%)	Nat. 82.60% A&B 85.50%)	(Nat. 93.80% A&B 96.8%)

	RA 5.26%	RA 21.05%	RA 47.37%	RA 21.05%	RA 5.26%	RA 26.32%	RA 73.68%	RA 94.74%
S5								
S6	5.26%	21.05%	47.37%	21.05%	5.26%	26.32%	73.68%	94.74%

Evaluative Comment – Areas of Strength

We have a positive presentation policy which encourages staff to present as many learners as possible for examinations.

Our A-D pass rates at National 5 and Higher are very close to the Argyll & Bute and National pass rates.

We have achieved some success at Higher level in S4 and we are continuing to build on this

We are above the National average for A-D pass rates at Advanced Higher

Evaluative Comment – Areas for Development

Our National 5 performance in S5 and S6 needs to improve. Our re-alignment of our curriculum and our constantly evolving curriculum offer will target learners who struggle to engage.

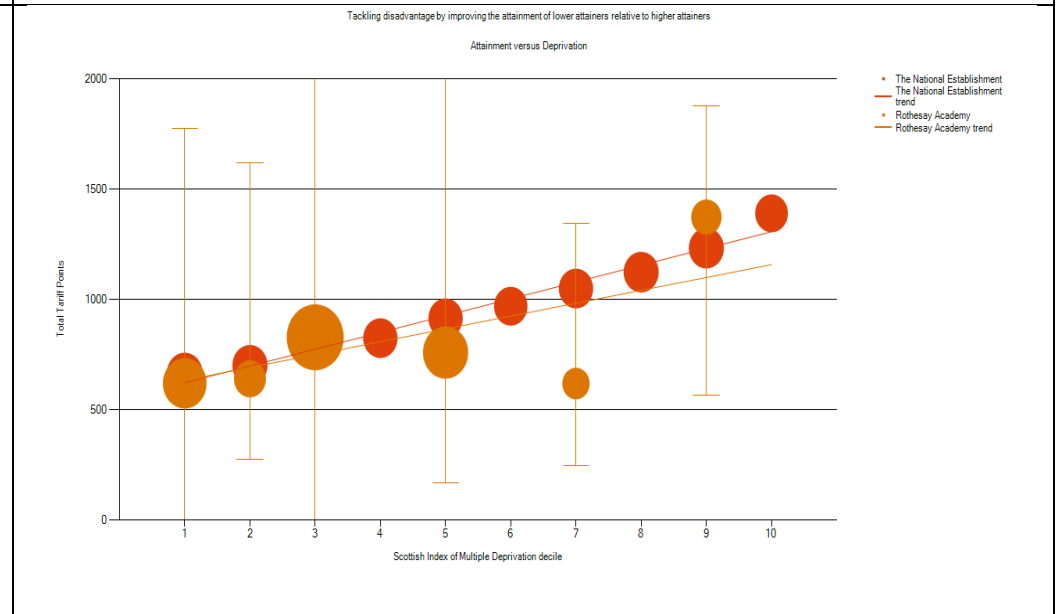
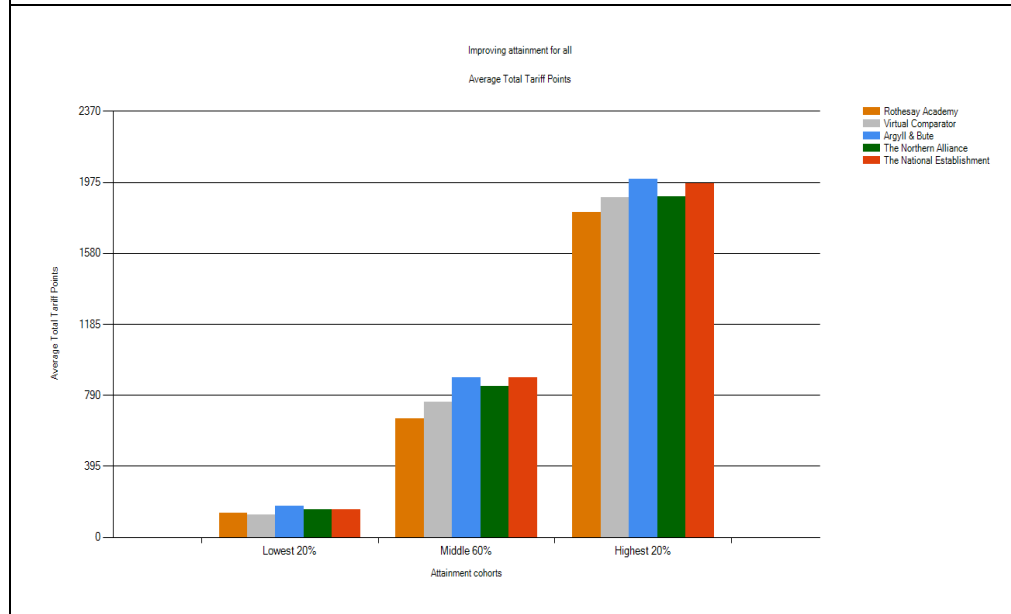
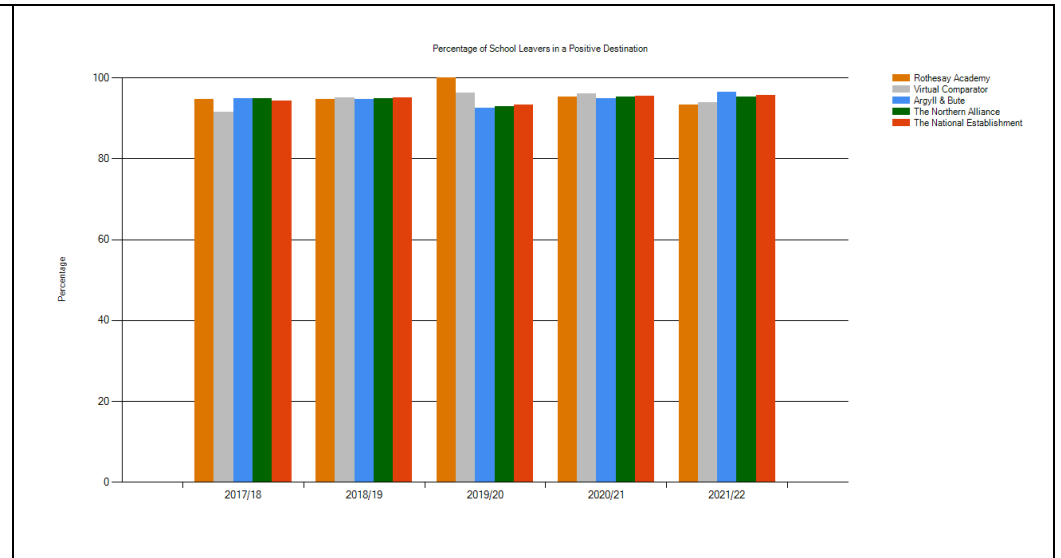
Our Higher performance in S5 requires further development

Our Advanced Higher performance requires further development

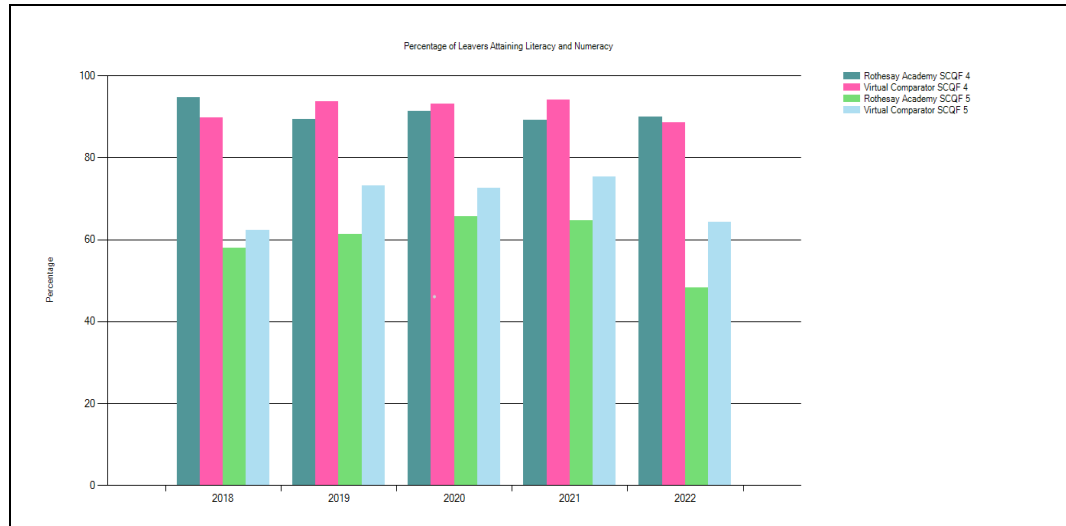
Insight Dashboard

What is Insight Scotland?

Insight is a professional tool, aimed at teachers and other staff. It is used to help secondary schools and local authorities identify areas of success and where improvements can be made for pupils in the senior phase. The dashboard has 4 measures.



Improving attainment in literacy and numeracy



Evaluative Comment – Areas of Strength

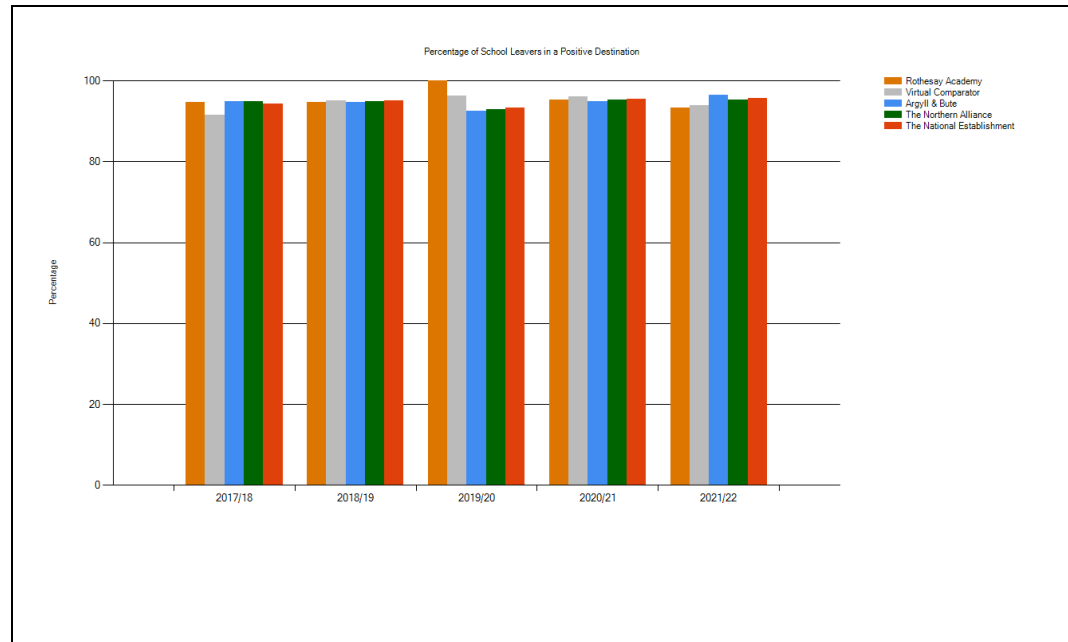
Overall performance at level 4 has improved and is now above the virtual comparator

Maths & English departments have developed targeted approaches to support young people to achieve at least level 4 in literacy and numeracy.

Evaluative Comment – Areas for Development

Attainment in numeracy at level 5 is below the virtual comparator and our Maths department are working with primary colleagues, the local authority and Education Scotland to develop a numeracy strategy that improves numeracy skills from primary to Senior Phase.

Increased post-school participation



Evaluative Comment – Areas of Strength

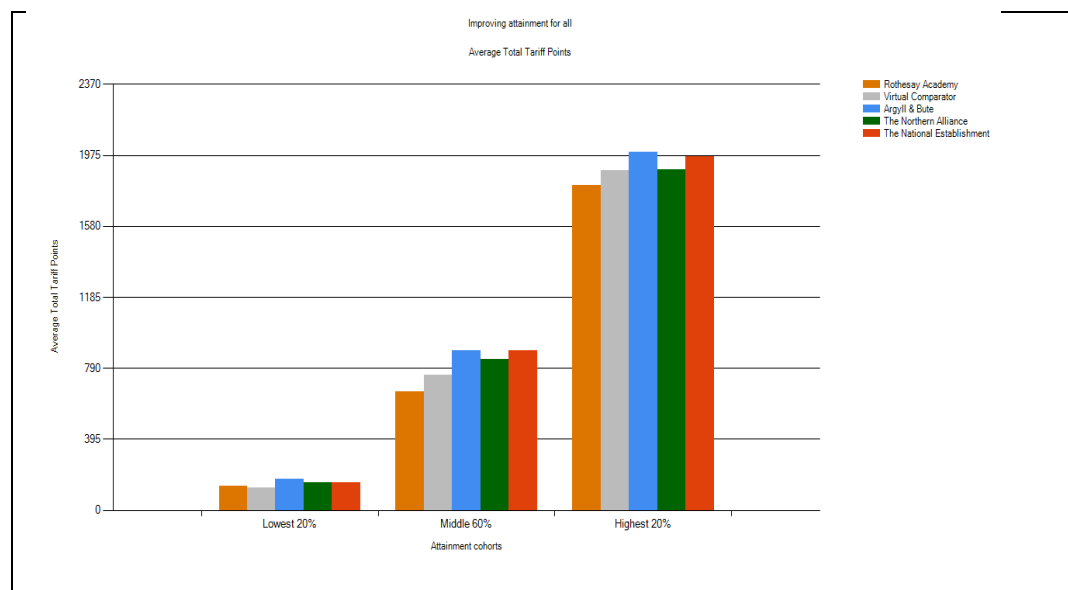
In line with VC and is historically an area of strength

Continued successful use of Flexible Learning Plans to support young people into workplace

Evaluative Comment – Areas for Development

Continue to build relationships with local employers and to widen curriculum pathways.

Improving attainment for all



Evaluative Comment – Areas of Strength

Lowest 20% of learners have performed well with total tariff points being above the virtual comparator

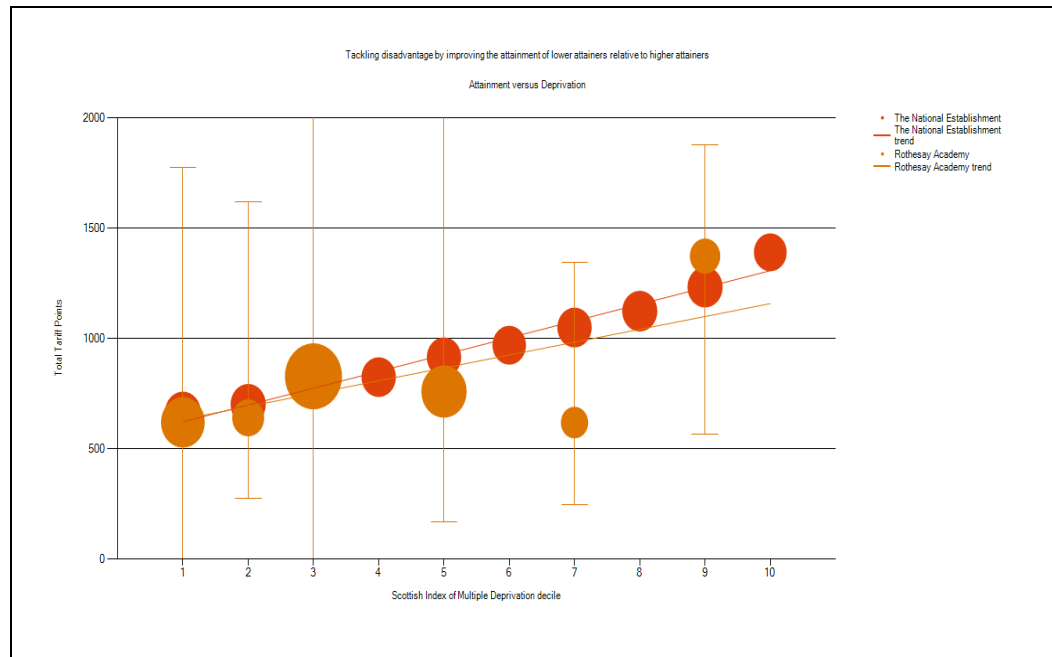
The gap is closing with the virtual comparator for the highest 20% compared with previous years. This reflects our focus on challenging more able students, particularly in S6, who now engage in a wider options offering which includes Open University YAS courses college Higher courses and an enhanced Advanced Higher offering in conjunction with other schools in the authority.

Evaluative Comment – Areas for Development

Middle 60% of learners is our target area. We are focussing on widening our offer to engage learners through outdoor learning, wider achievement awards, college courses and more bespoke coursing.

We have also re-aligned our timetable to ensure that there is sufficient time allocated to mentoring, numeracy and study skills in order to support learners in areas such as motivation, organisation, self-regulation, target setting and attendance.

Attainment versus Deprivation



Evaluative Comment – Areas of Strength

Learners in SIMD are generally in line with the national average

Learners in SIMD 9 are above the national average

Evaluative Comment – Areas for Development

Learners in SIMD 5 are below the national average

We are targeting the following areas to improve: enhanced coursing, curriculum changes and more rigorous attendance monitoring

Wider Achievement Qualifications

National Certificates; Higher National Certificates; Scottish Vocational Qualifications; National Progression Awards; Skills for Work qualifications; Foundation Apprenticeships; Scottish Baccalaureate

Overall evaluative comment/narrative on Wider Achievement Qualifications in your school:

NPA Beauty (level 4) – 7
NPA Computer Games Development (Level 6) – 1
Wellbeing Level 4 – 18 Level 5 – 32
NPA Photography – level 4 – 2 Level 5 – 5
Practical Cookery N5 – 6
Personal Finance – level 4 – 3 level 5 – 6
Leadership – Level 5 – 5
Travel & Tourism – Level 5 – 7
YAS Award Level 7 – Law – 1 Social Sciences - 1

We are offering a growing number of awards to our young people to ensure that they have meaningful pathways that promotes learner engagement. We are looking to develop and increase the number of courses/awards that are available, particularly at Level 6.

Duke of Edinburgh Bronze Award – 11

We have been chosen by Education Scotland to pilot their new course and award in Screen Education. Work is being done to prepare for the introduction of this course next session.

SCHOOL/COLLEGE PARTNERSHIP NATIONAL QUALIFICATIONS

SCHOOL/COLLEGE PARTNERSHIP NATIONAL QUALIFICATIONS	2021-22 A-C (including Passes)			
	Number of Presentations	Number Attaining A-C	% Attaining A-C	% of those commencing college course completing course
Higher	8	5		
National 5				
National 4				
SCHOOL/COLLEGE PARTNERSHIP NATIONAL QUALIFICATIONS	2021-22 A-D (including Passes)			
	Number of Presentations	Number Attaining A-D	% Attaining A-D	% of those commencing course completing course
Higher	8	7		
National 5				
National 4				

UNGRADED COURSES	Numbers Achieving			
	SCQF 4	SCQF 5	NPA	Other Awards (please detail)
Early Education & Childcare		14		
Sport & Recreation		10		
Travel & Tourism (school)				

Equity and Attainment – Evaluation of Key Factors

Factor in attainment	
Attendance	School Ave. Att. 21-22: 86.10%
Exclusion	No. of Exclusion Incidents 21-22: 7 No. of Exclusion Openings 21-22: 30
Additional Support Needs	95 of our learners have an additional support need – 33.5%
SIMD	SIMD 1-3 = 67.1%, SIMD 5 = 19.7%, SIMD 7 = 5.3%, SIMD 9 = 7.9%
Free School Meal Entitlement	24%
Care Experienced (and previously Care Experienced)	12 young people = 4.2%
English as Additional Language	8 children = 2.8% We have 1 x 0.4FTE EAL Teacher and 3 x EAL Assistants
Other (give details)	

Pupil Equity Funding

We have used PEF Equity funding to fund the following:

Principal Teacher of Equity

0.2FTE Health & Wellbeing, Family Liaison Officer

Breakfast Club

Study Skills & Homework supplies

Seasons for Growth (Bereavement Support)

Fresh Start Reading (Literacy Support)

Other information

We are continuing to make progress towards Our Children Their Nurturing Education (OCTNE) Gold Award and our Rights Respecting School Silver Award. We have also achieved our SCQF Bronze Award in light of the work we have done to broaden out our pathways.

- We continue to work with our Community Partners:

Mountstuart & The Yard
Bute Produce
Bute Sailing Club
Bute Community Forrest
The local farming community
Police Scotland
Young Carers
Inverclyde Athletics Club

- We have been selected by Education Scotland as one of only four schools in Scotland to pilot the Screen Education Curriculum & Award. We are looking forward to embracing the opportunities that this will bring to enable our young people to develop their skills and knowledge of a cutting edge industry within Scotland and beyond.
- We continue to work with our National Partners: The Wood Foundation, Scottish Mental Health Association (SAMH) & Quality Meat Scotland.
- We have a school trip to Belgium planned for June 2023 and we hope to build on this to re-establish trips abroad now that we have entered the post-covid era.
- Our Scottish Evening was a massive success and brought together our community to celebrate all things Scottish on 25th January (Burns Day)
