

School Profile 2020/21



Campbeltown Grammar School Area Committee Report December 2021

School Profile 2020/21

School Name: Campbeltown Grammar School
School Address: Hutcheon Road, Campbeltown, Argyll, PA28 6JS
Head Teacher: Samantha Stewart (Acting)

Context of the School

Campbeltown Grammar School is a non-denominational secondary school located within the remote small town of Campbeltown on the Kintyre peninsula with a population of less than 10,000. The school's catchment area spans across the South Kintyre area and our associated primary schools include Castlehill, Dalintober, Drumlemble, Carradale, Glenbarr, Rhunahaorine and Gigha primaries. Our current roll for the 2021-2022 session stands at 371 (as from 5th November 2021) with 18% of young people receiving free school meal entitlement (as from 5th November 2021).

Our current staff FTE stands at 33.06 (as from 5th November 2021).

In August 2021, the existing headteacher retired with a newly appointed acting headteacher taking up post from the 12th August 2021. This individual is currently on secondment within the authority and will remain in the acting headteacher post until a permanent headteacher is appointed.

Campbeltown Grammar School's vision, values and aims were revised in the 2018-2019 session after full stakeholder consultation and can be found below.

Vision: Campbeltown Grammar School aspires to be at the heart of the South Kintyre community, providing consistent, high quality learning opportunities for all our young people and inspiring them to achieve their full potential.

Values: Knowledge, Aspire, Determination, Achievement, Community, Respect, Engagement.

Aims:

- To welcome and encourage diversity and individuality and foster a shared commitment to respect for all, inclusion, honesty, equity, compassion and justice.
- To provide for the health and wellbeing of every member of our school community through effective engagement with parents and partners, ensuring our young people feel happy, safe, equal, valued and inspired to achieve their best.
- To develop resilience and determination in times of increasing pace and challenge through inspirational teaching, a supportive environment and an intrinsic desire for knowledge.
- To fully develop our young people's academic, social and emotional skills and ensure everyone leaves Campbeltown Grammar as responsible citizens, successful learners, effective contributors and confident individuals who are ready and eager to take on the next exciting steps in their lives in employment, training, college and university.

Curriculum Model and Learner Pathways

BGE

Learners within S1 and S2 experience a breadth of the curriculum across all subject areas prior to specialising in 8 subject areas as they enter S3.

Senior Phase

Currently, our Senior Phase pupils embark on studying 6 different subjects across our provision including offerings from Argyll College within Engineering, Sport and Fitness, Make Up Skills, Practical Cookery and Practical Cake Craft.

Unfortunately this session, they have been unable to fulfil a provision within Construction due to unsuccessful attempts to recruit a construction tutor.

We continue our great working relationship with our SDS Careers' Advisors and this session we are working closely with a newly appointed DYW Co-ordinator to build upon business links already established whilst creating new ones within the town and across the Kintyre area. This is with the view of supporting more young people in embarking upon work experience and apprenticeship opportunities.

PEF Funding

2020-2021

PEF spending last session mainly focussed on IT provision to ensure each Senior Phase pupil was allocated their own Chromebook to be able to utilise until such time they leave Campbeltown Grammar School. Further to this, the creation of home learning packs and investment in GL assessments which allow staff to identify strengths of learners, gaps in learning, potential barriers to learning with a view of directly impacting upon learning and teaching were invested in.

2021-2022

We are currently engaging in whole stakeholder consultation with regard to our PEF spending this session to ensure that everyone's ideas, views and opinions are considered and reflected upon in terms of how Campbeltown Grammar School will continue its work in closing the poverty-related attainment gap.

Education Scotland Update

Education Scotland announced on the 16th September 2021 that they would be resuming their scrutiny activity post COVID-19. Campbeltown Grammar School was notified late September of Education Scotland's intention to visit December 2021 as a follow up to their last visit in October 2021. HM Inspectors J. Gallagher and B. Geddes will be visiting us Thursday 9th December 2021 and Friday 10th December 2021 to review progress made to date. We look forward to welcoming both back to CGS at this time.

Recognising Wider Achievement

In previous sessions we have worked hard to provide pupils with opportunities to engage in wider achievement opportunities in order to gain further accreditation. However, due to the significant challenges posed last session as a result of the COVID-19 pandemic, the focus for Campbeltown Grammar School was on that of subject accreditation in the first instance. In addition to this, as a result of ongoing restrictions in place last session, this impacted upon the ability to fully deliver the wide range of wider achievement opportunities available.

This session sees us return to the delivery of a number of wider achievement courses which include:

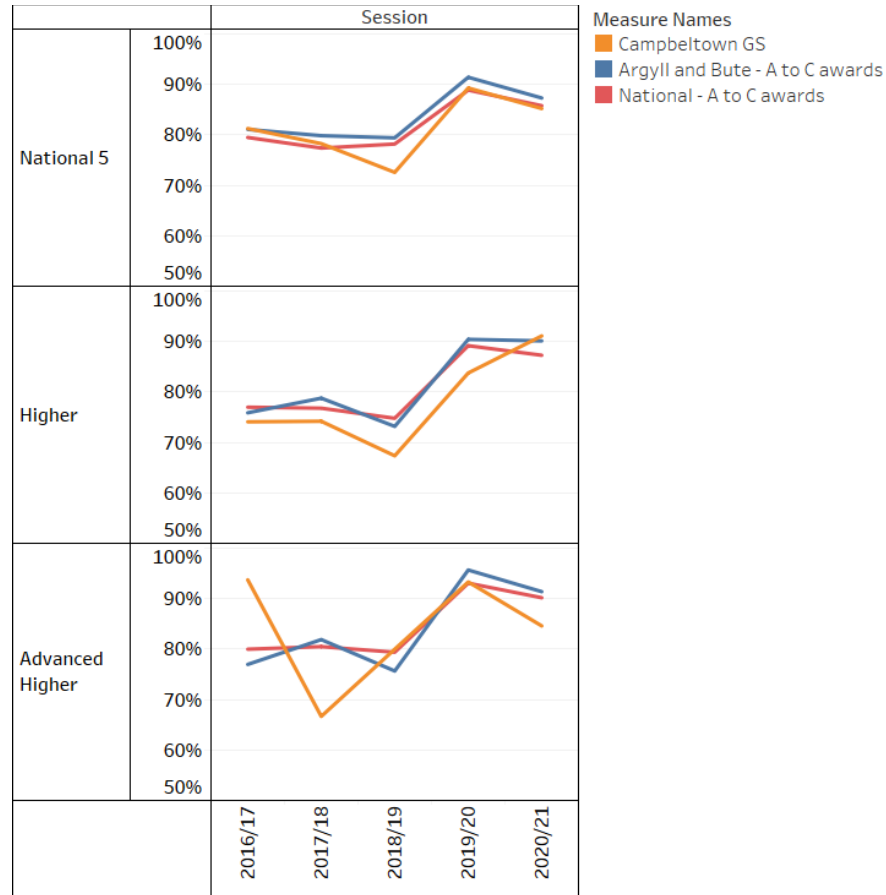
- Employability;
- Leadership;
- Personal Safety;
- Mental Health and Wellbeing;
- Sports Leaders.

School Roll

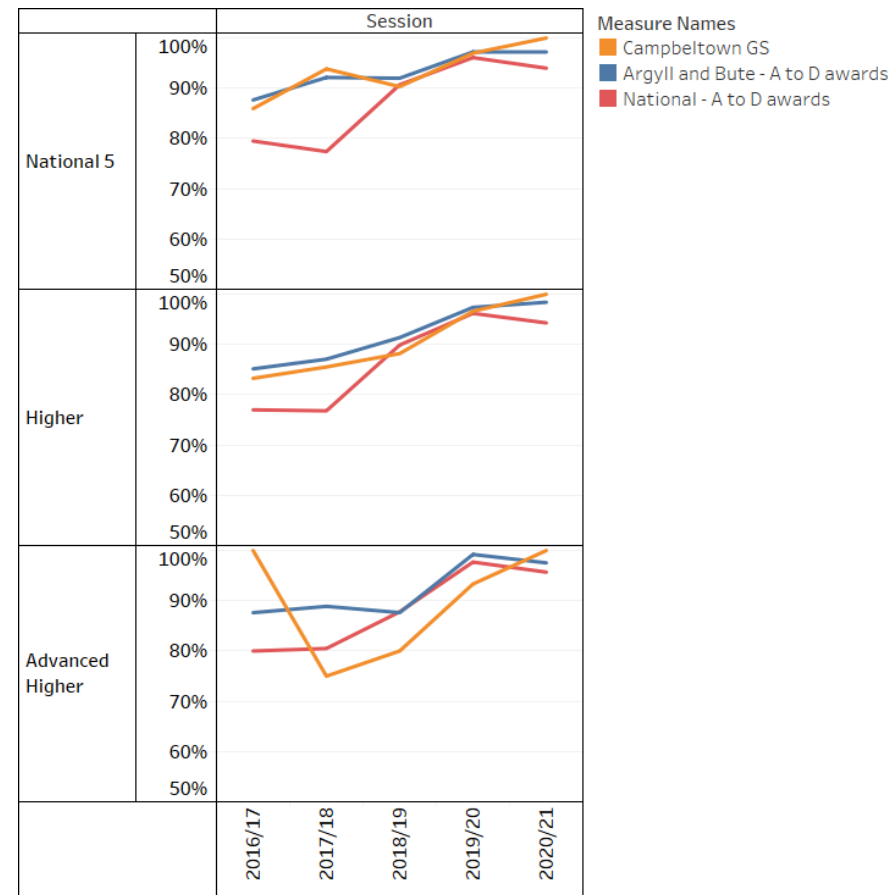
School Roll as at Census	S4	S5	S6
2020/21	69	62	44

SQA Results

Levels A to C



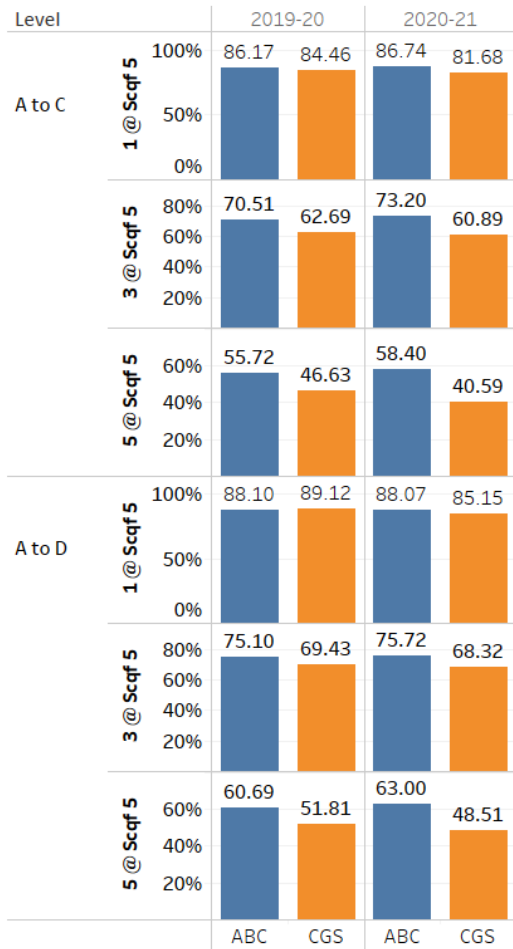
Levels A to D



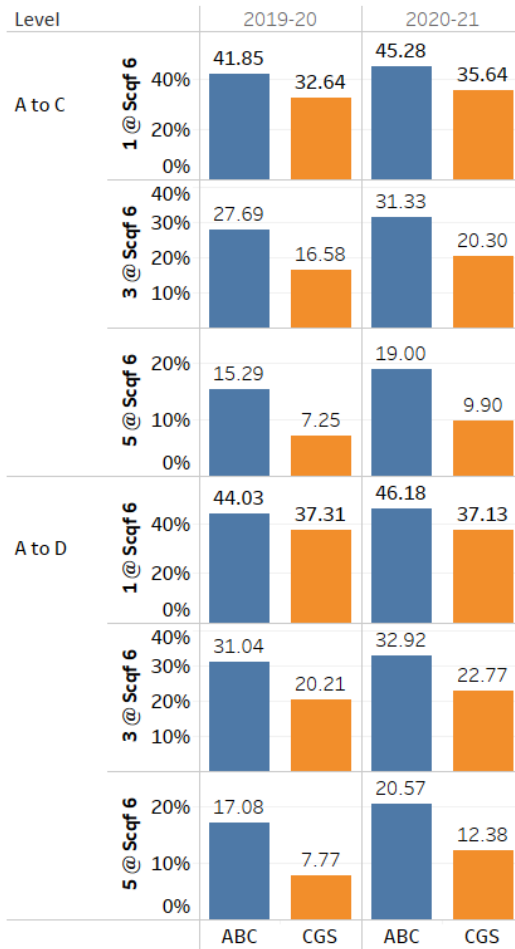
Breadth & Depth

The chart below shows SQA Breadth and Depth information for S4 to S6 (Acc):

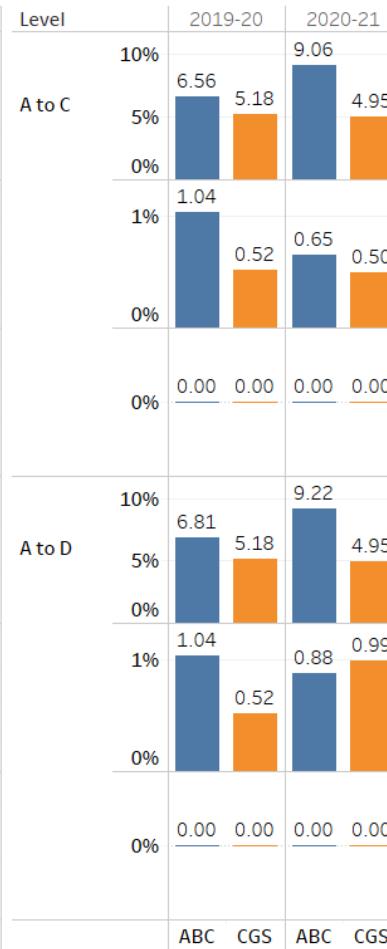
SCQF - Level 5



SCQF - Level 6



SCQF - Level 7



Pupil and Staff Wellbeing

2020/2021

Last session, as pupils and staff continued to face significant challenges posed to them as a result of the COVID-19 pandemic, wellbeing was prioritised through rigorous tracking of pupil wellbeing, clear lines of communication with families, the local authority and a range of partners who worked closely together to ensure our most vulnerable were safe and well. Supportive interventions including referrals to our school nurse, NHS School counsellor, youth workers and other agencies where appropriate.

2021/2022

Pupil and staff wellbeing remains a priority for us here at Campbeltown Grammar School and our school vision, values and aims include the clear commitment to ensuring all within our school community feel happy, safe, respected, equal and included.

Within our school improvement plan for 2021-2022 and in line with previous inspection and follow up visit feedback, wellbeing is a clear priority in terms of how we are continuing to implement approaches to wellbeing which support our young people. Key actions within this priority are included against lead people, timescales and success criteria to allow us to evaluate impact.

The newly appointed headteacher is leading by example in terms of building and sustaining positive, nurturing relationships with all young people. Further to this, in November 2021 our DHT Support and one of our Principal Teachers of Guidance will be embarking upon leadership training related to Argyll and Bute's nurture strategy 'Our Children, Their Nurturing Education'

Blended and Home Learning

Google Classroom has been and remains the primary platform on which young people can access their learning when not in physical attendance at school. Throughout the last two sessions, the heightened need for staff to be able to access and use Google Classroom to its fullest capacity has been enabled through a range of CPD interventions led both at SLT and Principal Teacher level.

In terms of live lessons, young people engaged in live lessons last session throughout school closures with attendance and engagement figures being tracked.

PEF funding to secure Chromebooks for the Senior Phase supported more young people to engage virtually last session. However, there are a number of issues being faced in terms of ease of accessibility on such devices which we are currently supporting our young people to overcome.

Contingency Planning

Campbeltown Grammar School has a contingency plan in place should the need arise to revert to this at any point this session. The acting HT is fully confident in the ability to move throughout the stages if required.

School Successes

2020-2021

We continued last session in working towards our Silver accreditation within the Vision Schools Programme which is a partnership between the School of Education at The University of the West of Scotland and the Holocaust Education Trust. This included one of our DHTs completing a master module in Holocaust Education. Our pupil Holocaust Education Trust Ambassadors also attended a virtual event led by the partnership and reported back to their peers, sharing their learning and plans on how they can take forward Holocaust Education here within Campbeltown Grammar School.

Last session our S3 learners participated again in the Youth Philanthropy Initiative (YPI). The virtual final was a huge success with a group winning £3000 for our local MacMillan Nursing team.

Furthermore we continued to provide our young people with outdoor learning experiences not only as part of the phased return to school in March 2021 but as part of our outdoor learning curriculum offering.

Finally, our BGE (S1-S3) were able to experience their BGE activity day prior to finishing up end of June 2021.

2021-2022

Thus far this session we have:

- successfully appointed our new Senior Pupil Leadership Team who are contributing significantly to school improvement;
- Implemented our new Recognising Achievement agenda with a number of individual achievements being recognised within our school and local wider community;
- Participated in the annual Kintyre Music Festival, showcasing the many talents of our gifted young people;
- Hosted the BBC Scottish Symphony Orchestra and featured on BBC Scotland online, both live and post visit as whilst in Campbeltown the BBC SSO worked with our Senior Phase learners, listening to their views about the future of climate changes to their environment and how the world around them might look in the future before then devising their own music which captures what they think will happen to their environment as well as their world;
- Been gifted a £1000 donation by Springbank Distillery whom we submitted bids to regarding eco projects we would like to take forward in Art and Learning Support;
- Become a Duke of Edinburgh Licensed Centre and this year will see our very first S3 DoE group in operation!

Overview

Measure	16/17	17/18	18/19	19/20	20/21	% change in Roll over 5 years ¹
Roll (as at census)	370	351	360	353	378	2.16%
Clothing and Footwear Grant (Number of Pupils) ³	54	48	40	85	84	
Clothing and Footwear Grant (% of Number of Pupils)	14.59%	13.68%	15.49%	23.28%	21.93%	
Clothing and Footwear Grant (%) - Authority Average ²	12.98%	11.77%	14.59%	15.96%	15.45%	
Free School Meals (Number of Pupils) ³	33	32	57	58	66	
Free School Meals (% of Number of Pupils)	8.92%	9.12%	10.87%	15.89%	17.23%	
Free School Meals (%) - Authority Average ²	10.53%	9.45%	11.31%	10.75%	12.34%	
Free School Meal - National Average for Secondary Schools (%) ⁴	14.1%	14.40%	15%	15.6%	Not available	

Attendance, Absence and Exclusions⁸

Measure	16/17	17/18	18/19	19/20	20/21	Range of Attendance (%) over 5 years ⁷
Attendance:						
Attendance (% of School Roll)	92.26%	91.57%	91.52%	89.29%		
Authorised Absence (% of School Roll) ⁸	5.04%	5.91%	5.36%	7.27%		
Unauthorised Absence (% of School Roll)	1.86%	2.45%	3.10%	3.39%		
Attendance Number of Pupils (%) - Authority Average ¹	91.58%	91.24%	90.3%	90.01%		
Attendance Number of Pupils (%) - National Average ⁹	91.2%	Not Collated	90.7%	Not Collated	Not Available	

Measure	16/17	17/18	18/19	19/20	20/21 ⁶
Exclusions:					
Exclusion Openings - Number	193	99	18	44	91
Exclusion Incidents - Number	26	15	7	7	29
Number of Pupils	19	8	7	5	25

Footnotes

¹ Please note the % change in Roll over 5 years shows the percentage change in roll figures from 2016/17 to 2020/21 and is not an average.

² averages based on Secondary only.

³ FSMCG % based on whole school figures for session.

⁴ National average for FSM taken from School Healthy Living Survey Statistics 2020.

⁵ Attendance, Absence and Exclusion information is now collected on a biennial basis by Scottish Government.

⁶ Exclusion data taken from Business Intelligence – Session 2020 – EXC 6 Individual School Cumulative Report.

⁷ Attendance change figure shows percentage of change and is not an average.

⁸ Authorised absence includes bereavement, short – term exceptional domestic situations, religious observance, weddings of immediate family. Unauthorised absence includes truancy, unexplained absence and most family holidays during term time. Attendance and absence is outlined in Management Circular 3.03.

⁹ National attendance statistics taken from Scottish Government Summary statistics for schools in Scotland.