

- LEGEND**
- Break Glass - Fire Alarm - Call Point
 - Fire Alarm Control Panel
 - 🔊 Fire Alarm Sounder
 - ⊙ Smoke Detector
 - 📄 Fire Evacuation Plan
wall mounted in entrance hallway
Also contained within Guest Information
folders within each guest room
 - ⚡ Emergency Lighting
 - ⚡ External Emergency Lighting
 - 🧯 Co2 Fire Extinguisher (2kg)
 - 🧯 Water Fire Extinguisher (9L)
 - 🚪 1/2 or 1 Hour Fire Rated Door with Self Closer

GENERAL NOTES:

Fire Warning System to comply with British Standard 5829: Part1 : 2017.

Emergency Lighting System to comply with British Standard 5266 : Part 1 : 2016. (Maintained - 2 hour duration)

Firefighting Equipment to comply with British Standard 5306-0: 2020 and British Standard 5306-3 : 2017.

Signs and Notices to comply with the Health and Safety (Safety Signs and Signals) British Standard ISO 3864 Part 1: 2011

All Fire Rated Doors to comply with BS 476 : Part 22 : 1987 or BS EN 1634-1: 2018.

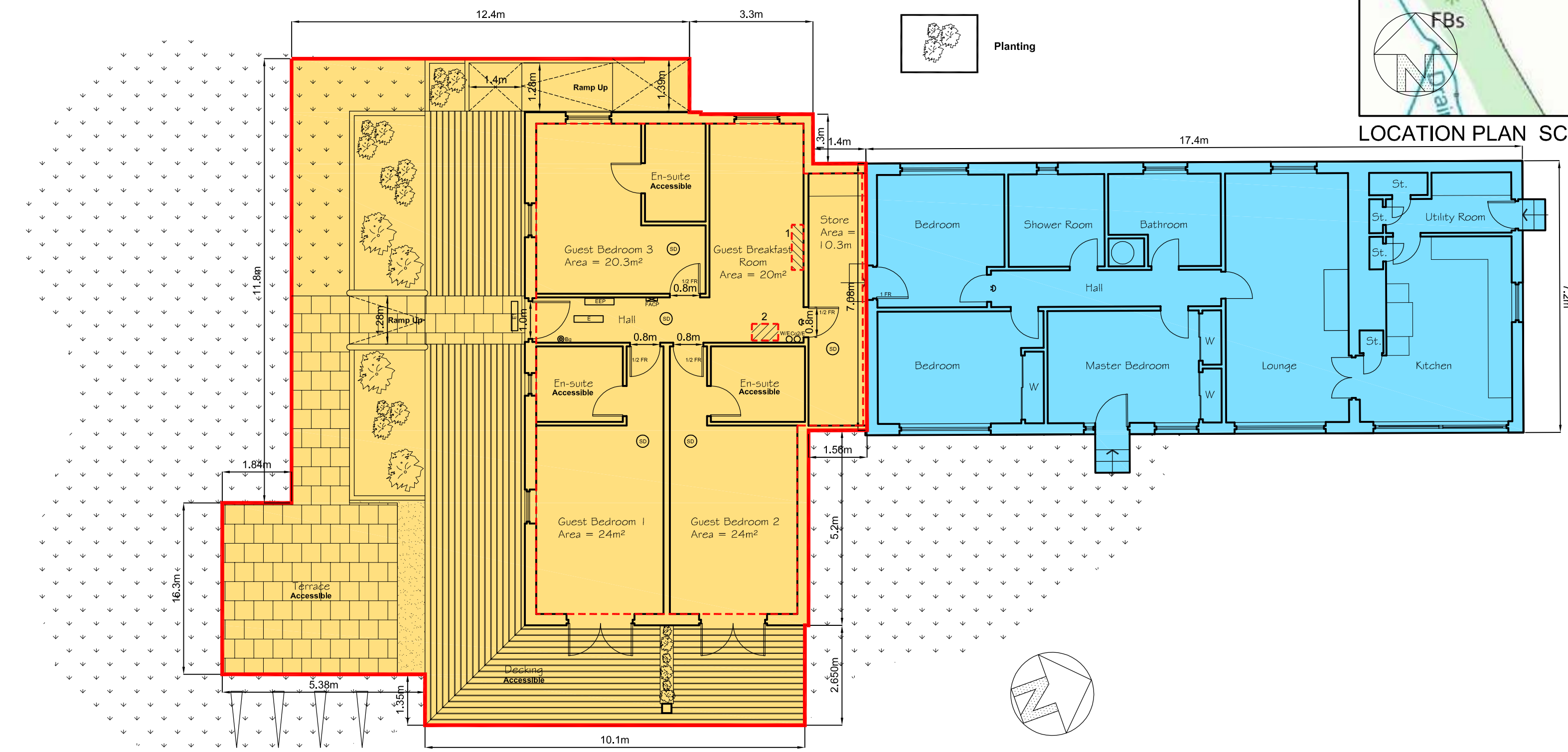
Fire Action Notices are positioned in entrance hallway (wall mounted) and within all guest information folders in each Guest Room.

- KEY**
- Extent of Property to be Licensed
Total Area inc External = 252m²
(External Area = 139m²)
 - Property (Location Plan)
 - Alcohol Display Areas
(see 1 & 2 for dimensions)
 - Garden Area Including Access & Parking
in Same Ownership (Location Plan)
 - Owners Accommodation not to be Licensed
 - Denotes internal walls of area to be Licensed
- KEY (EXTERNAL SURFACES)**
- Ramped Access
 - Level Platt top & bottom ramp
 - Paved Area
 - Timber Decking
 - Slate Chips
 - Grass
 - Planting

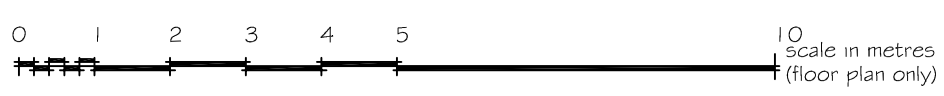
1. Alcohol Display Unit 1.2m(w) x 0.31m(d) x 1.27m (h)
Total Linear Display = 3.6mm
Dimension of Display Frontage (LxH) = 1.52m²
2. Fridge 0.7m(w) x 0.44m(d) x 0.48m(h)
Total Linear Display = 2.1m
Dimension of Display Frontage (LxH) = 0.34m²



LOCATION PLAN SCALE 1:2500



GROUND FLOOR PLAN SCALE 1:100



CLIENT
MRS C BENNETT

JOB TITLE
PROPOSALS AT
ASPEN LODGE LUXURY B&B,
GLENCRUITTEN,
OBAN
ARGYLL

DRAWING TITLE
FLOOR PLAN LAYOUT/LOCATION
LICENSING BOARD APPLICATION
AS PROPOSED

DRAWING REVISION NOTES:

SCALE	DATE	DRAWN
1:100/2500	AUG 2021	FRM
JOB NO.	DRAWING NO.	REVISION.
2104-1101		B

CRAWFORD MACPHEE
Architectural Services
Rose-Maire, Mossfield Drive, Oban, Argyll PA34 4JN
telephone: 07920164952 email: crawfordmacphee@hotmail.com