



**2019 Review of Electoral Arrangements**

**Argyll and Bute Council area**

**Proposals – Public Consultation**

**4 November 2020 – 26 January 2021**

[www.consult.lgbc-scotland.gov.uk](http://www.consult.lgbc-scotland.gov.uk)

## Proposals for Argyll and Bute council area

1. We present an electoral arrangement for 34 councillors representing four 2–member wards, six 3–member wards and two 4–member wards, reducing overall councillor numbers by two.
2. In summary our proposals:
  - take account of the Islands (Scotland) Act by using the flexibility offered by two–member wards to better reflect local ties for island communities. The proposals present island–only wards for: Islay, Jura and Colonsay; Mull, Iona, Coll and Tiree; and retain the existing Isle of Bute ward with two councillors rather than three as at present;
  - consider special geographic circumstances in relation to variation from electoral parity in the proposed island wards of: Mull, Iona, Coll and Tiree; and Islay, Jura and Colonsay due to these islands’ remoteness and their limited transport links;
  - make no changes to the boundaries of five of the existing wards (Cowal; Dunoon; Isle of Bute; Lomond North; and Mid Argyll);
  - place Oban within a single ward to avoid breaking local community ties;
  - minimise change to the existing ward boundaries in Helensburgh, while reducing councillor numbers there by one;
  - take account of the Scottish Elections (Reform) Act 2020, which allows the use of 2–member and 5–member wards across Scotland, to design a 2–member ward that considers local ties in Lorn; and
  - have regard to Argyll and Bute Council’s four administrative areas and the local ties and communities that they represent.
3. The table below details the electorates with actual and forecast variation from parity of the proposed wards.

Ward No.	Ward Name	Cllrs	Electorate (Dec 2018)	Variation from Electoral Parity (%)	Forecast Electorate (2024)	Forecast Variation from Electoral Parity (%)
1	Kintyre	3	6,032	2.5%	5,847	0.7%
2	Islay, Jura and Colonsay	2	2,847	-27.5%	2,927	-24.4%
3	Mid Argyll	4	7,357	-6.3%	7,302	-5.7%
4	Mull, Iona, Coll and Tiree	2	3,211	-18.2%	3,438	-11.2%
5	Oban	4	8,357	6.5%	8,497	9.7%
6	Lorn	2	4,190	6.8%	4,164	7.5%
7	Cowal	3	5,734	-2.6%	5,596	-3.7%
8	Dunoon	3	5,500	-6.6%	5,304	-8.7%
9	Isle of Bute	2	4,696	19.6%	4,406	13.8%
10	Lomond North	3	6,000	1.9%	5,858	0.8%
11	Helensburgh Central	3	6,424	9.1%	6,075	4.6%
12	Helensburgh and Lomond South	3	6,377	8.3%	6,420	10.5%
		<b>34</b>	<b>66,725</b>		<b>65,834</b>	

## Proposed wards

### Ward 1 – Kintyre

Ward 1 contains most of Kintyre and includes the Isle of Gigha. The ward boundary follows the community council area boundaries between Tarbert and Skipness Community Council and East Kintyre and West Kintyre Community Councils and partly a historical ward boundary between the North Kintyre and Mid Kintyre wards in use between 1995 –1999. We would particularly welcome views on whether Gigha should be placed in an island only ward with Isla, Jura and Colonsay or whether it is better placed in a ward with Kintyre. We propose 3 councillors for ward 1.



## Ward 2 – Isla, Jura and Colonsay

Ward 2 splits the existing island-mainland Kintyre and the Islands ward to create an island-only Isla, Jura and Colonsay ward. The Commission has proposed fewer electors per councillor for this ward rather than the number that the strict application of electoral parity would require. This is due to the ward comprising solely island communities with limited transport links to the mainland. We would particularly welcome your views on whether these islands should sit within their own island ward or be placed in an island-mainland ward as at present. We propose 2 councillors for ward 2.





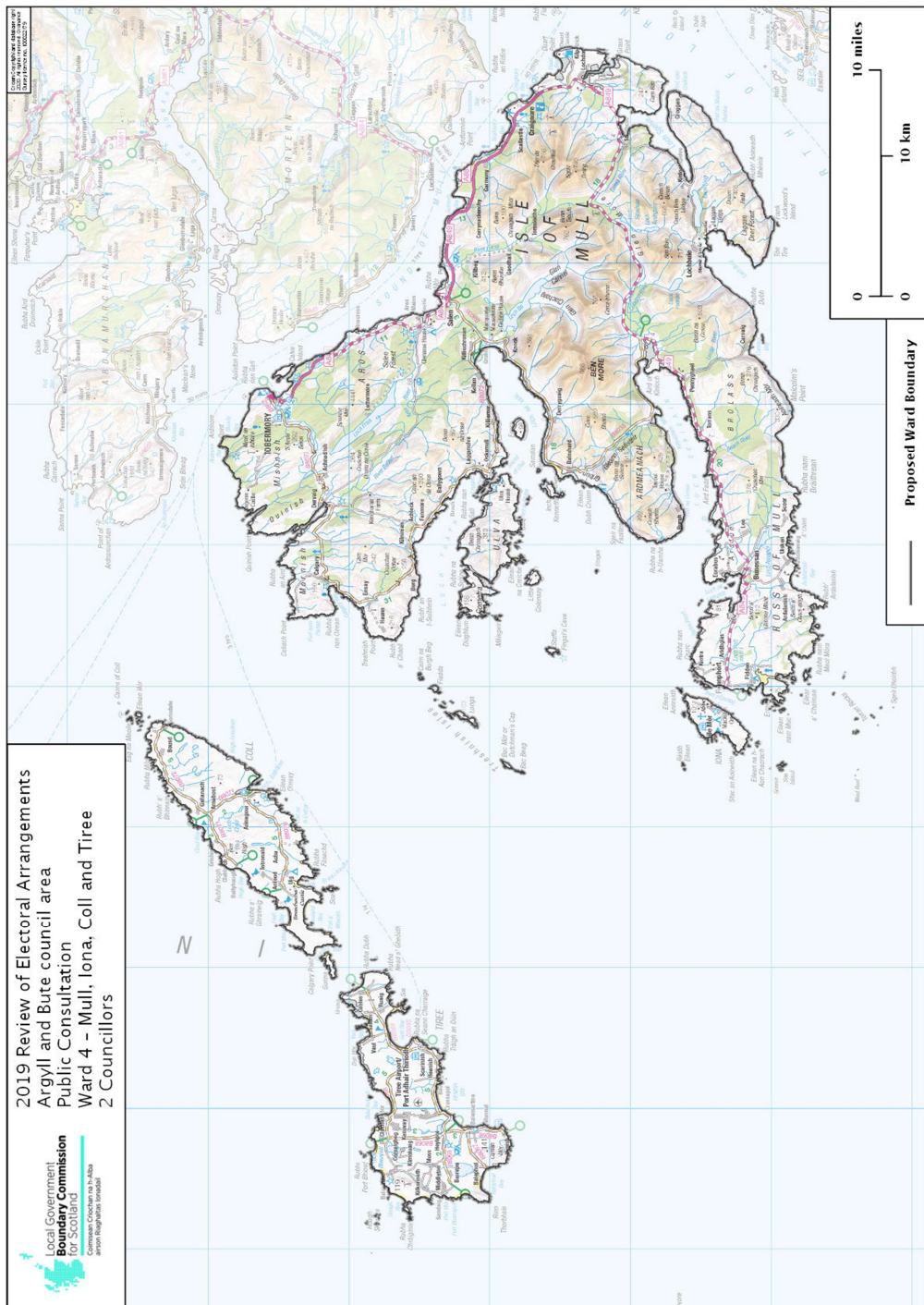
## Ward 3 – Mid Argyll

Ward 3 extends the existing Mid Argyll ward southwards to include Tarbert and Skipness. The ward boundary follows the community council area boundaries between Tarbert and Skipness Community Council and East Kintyre and West Kintyre Community Councils and partly a historical ward boundary between the North Kintyre and Mid Kintyre wards in use between 1995 –1999. We propose 4 councillors for ward 3.



## Ward 4 – Mull, Iona, Coll and Tiree

Ward 4 splits the existing island-mainland Oban South and the Isles ward to create an island-only Mull, Iona, Coll and Tiree ward. The Commission has proposed fewer electors per councillor for this ward rather than the number that the strict application of electoral parity would require. This is due to the ward comprising solely island communities with limited transport links to the mainland. We would particularly welcome views on whether these islands should sit within their own island ward or be placed in an island-mainland ward as at present. We propose 2 councillors for ward 4.





## Ward 5 – Oban

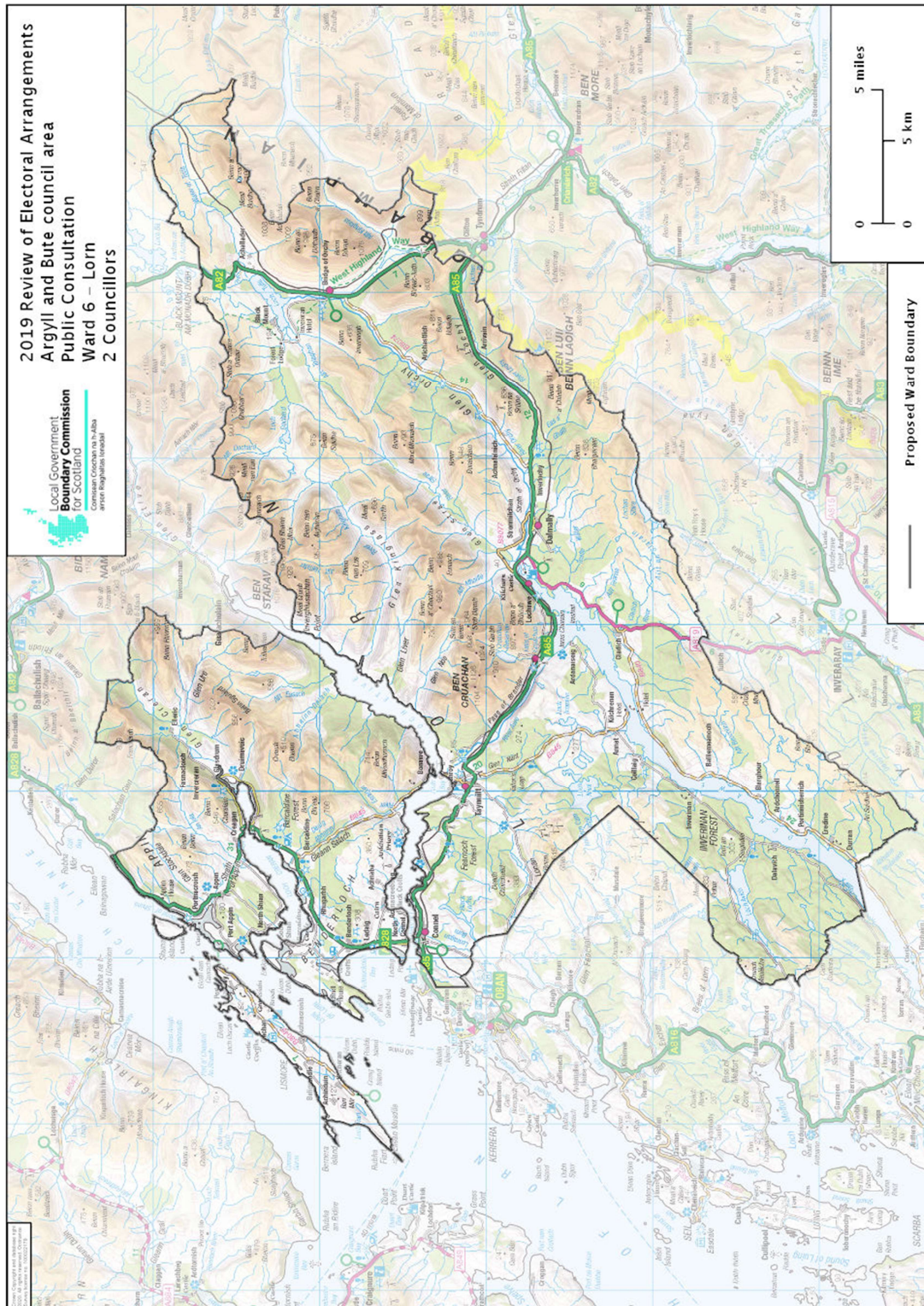
Ward 5 places Oban within its own ward ensuring the town is in a single ward rather than split between two wards as it is currently. The ward extends southwards to Melfort and it includes the inhabited islands of Kerrera, Seil and Luing. We would particularly welcome your views on whether these islands should remain in an Oban ward or be linked with Mull, Iona, Coll and Tiree. We propose 4 councillors for ward 5.





## Ward 6 – Lorn

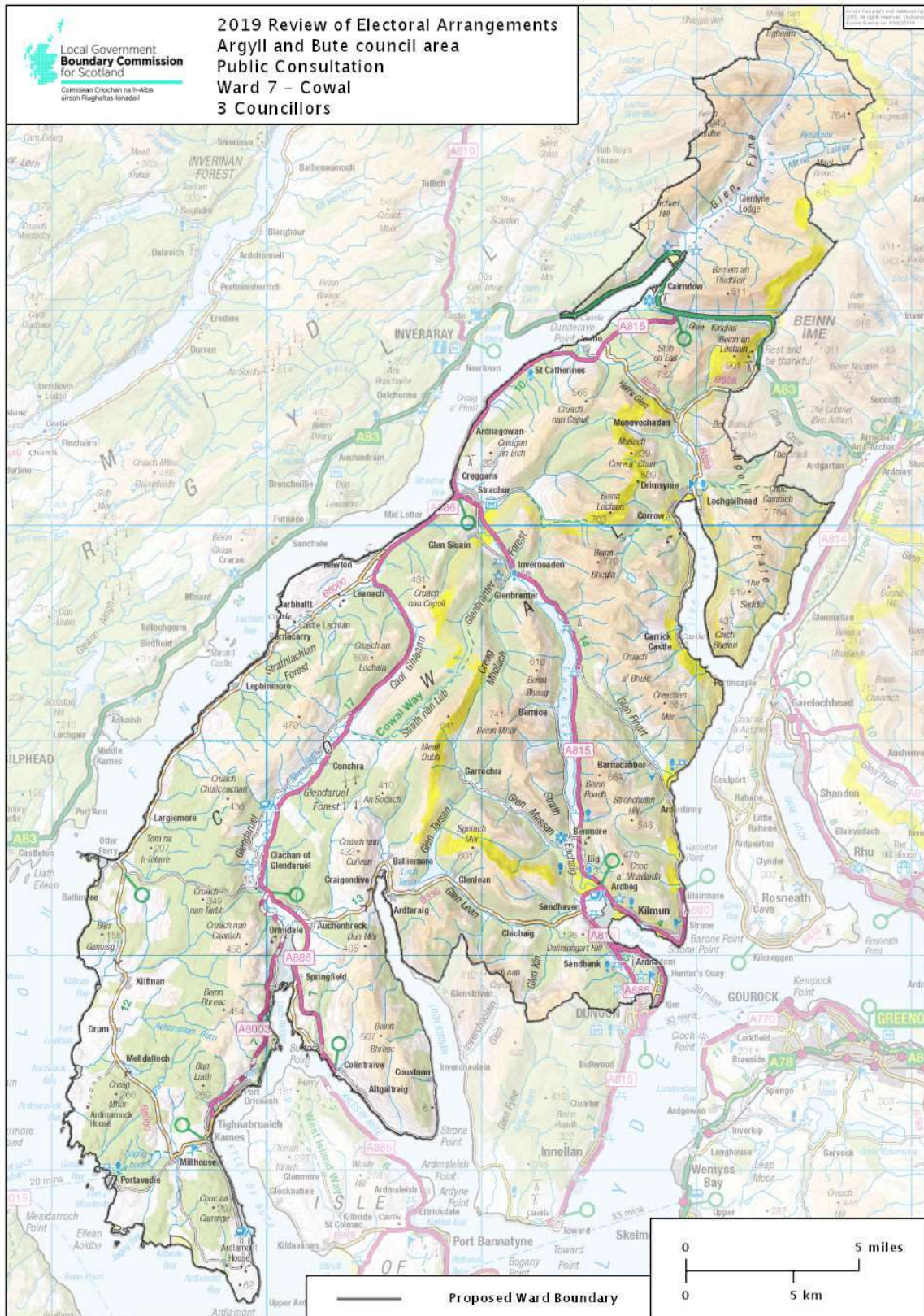
Ward 6 includes Lorn and the inhabited island of Lismore. This is a change to the existing arrangements where Lorn is in a ward with part of Oban. We would particularly welcome your views on whether Lismore should remain in a Lorn ward or be linked with other islands in an island-only ward. We propose 2 councillors for ward 6.





# Ward 7 – Cowal

Ward 7 is unchanged and retains the existing number of councillors and the same ward boundary.





## Ward 8 – Dunoon

Ward 8 is unchanged and retains the existing number of councillors and the same ward boundary.



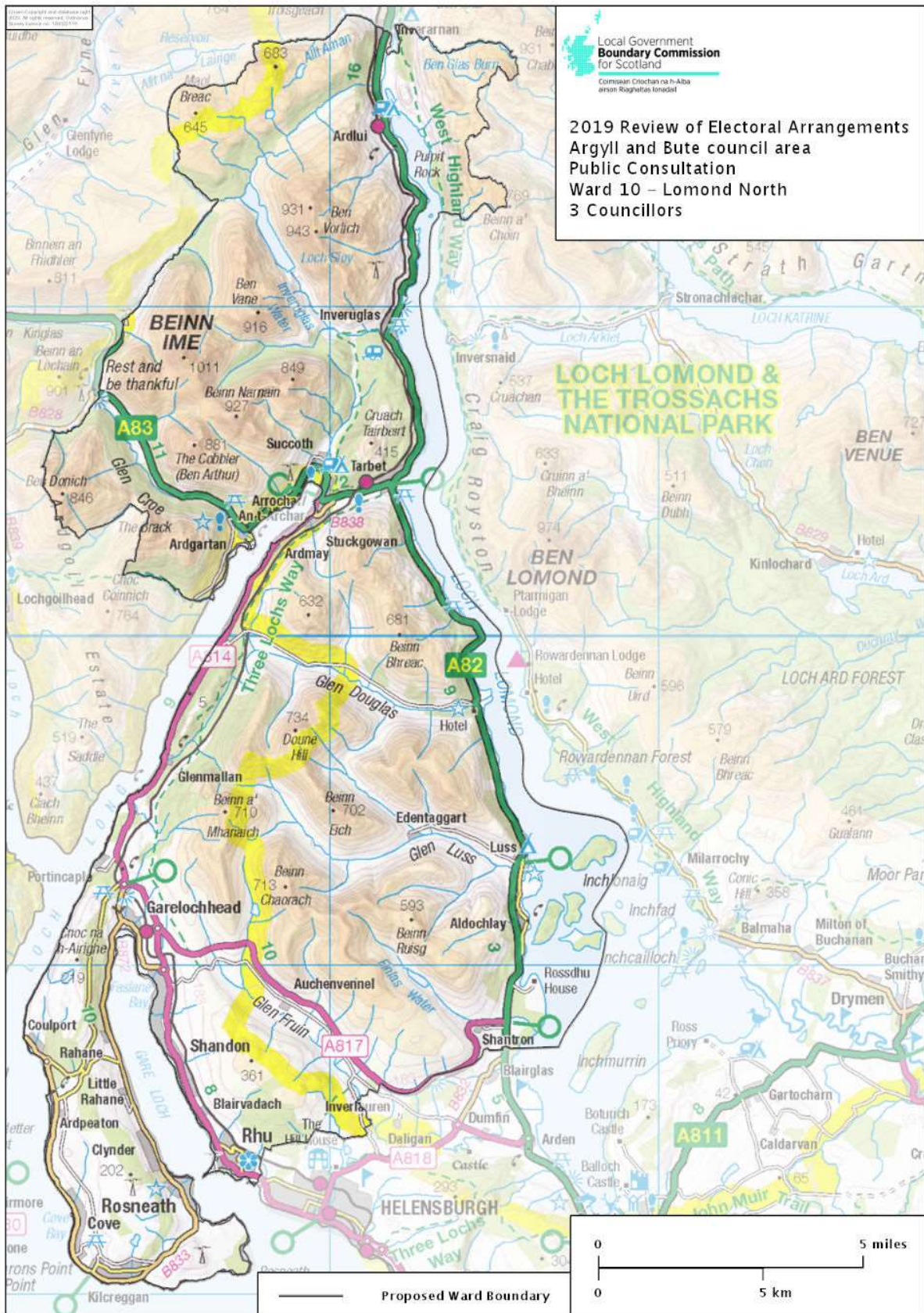






## Ward 10 – Lomond North

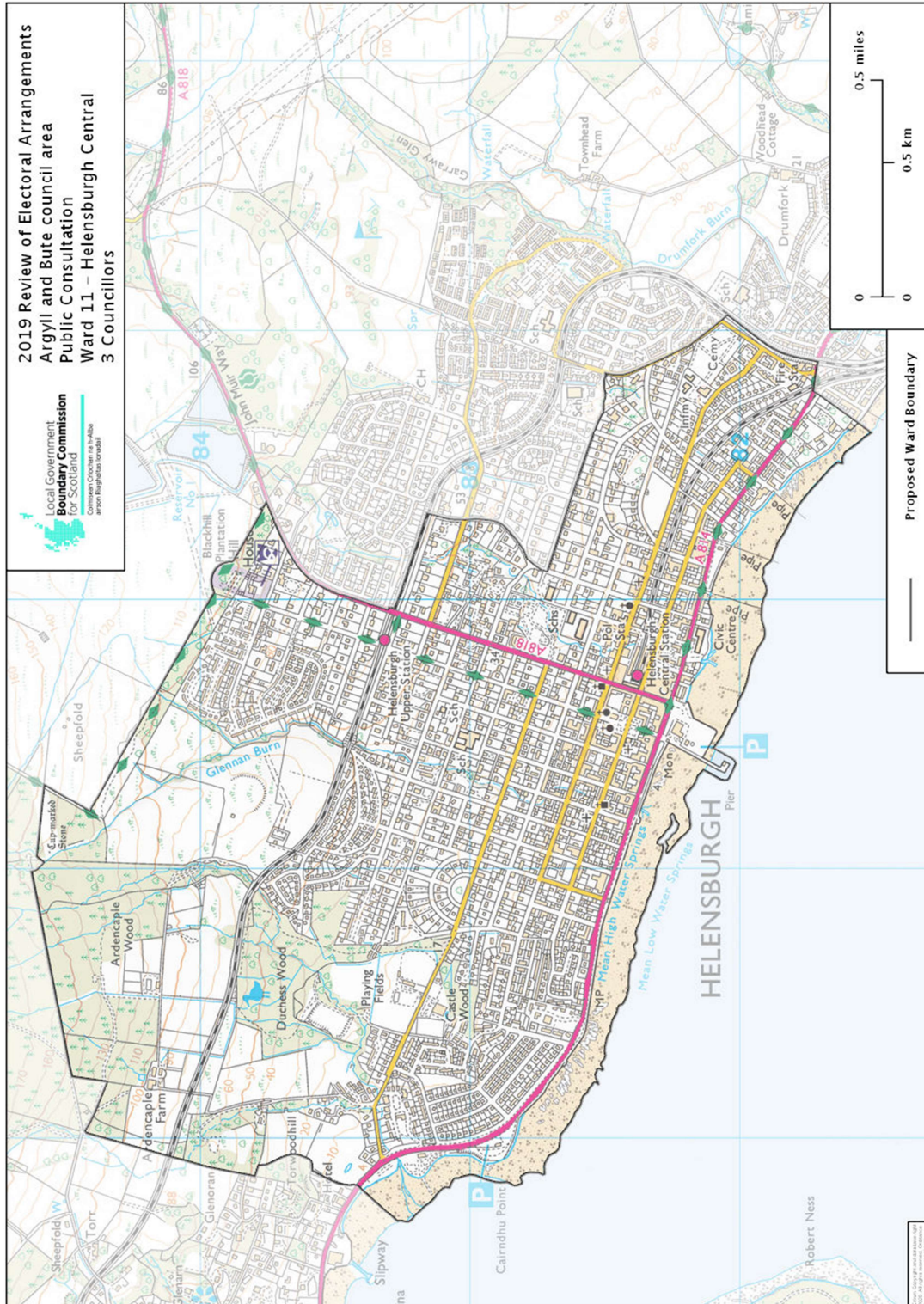
Ward 10 is unchanged and retains the existing number of councillors and the same ward boundary.





## Ward 11 – Helensburgh Central

Ward 11 largely follows the existing Helensburgh Central ward boundary, however, reflecting the forecast decline in electorate, the number of councillors is reduced from 4 to 3. To help facilitate this change the ward boundary is amended by St Joseph’s School and follows Old Luss Road, Havelock Street and Charlotte Street. The proposed changes to the existing ward boundary follow historical ward boundaries in use from 1999 – 2007.





## Ward 12 – Helensburgh and Lomond South

Ward 12 largely follows the existing Helensburgh and Lomond South ward boundary. The ward boundary is amended by St Joseph’s School and follows Old Luss Road, Havelock Street and Charlotte Street. The proposed changes to the existing ward boundary follow historical ward boundaries in use from 1999 – 2007. We propose 3 councillors for Ward 12.

