

**EDUCATION PERFORMANCE DATA ANALYSIS 2019**

---

**1.0 EXECUTIVE SUMMARY**

- 1.1 The main purpose of this report is to provide an overview of key performance data and outcomes for all pupils across each of the ten secondary schools for session 2018-2019 using the local authority data available from Insight.
- 1.2 This report includes statistical analysis available from Insight released in September 2019 which overviews authority data and allows further comparison with virtual comparator and national data (Appendix 1).
- 1.3 Insight is designed to allow fair comparison of a group of pupils in Argyll and Bute with larger groups of pupils taken from all the other 31 local authorities with similar backgrounds (gender, additional support need, stage, and SIMD band). This is known as the Virtual Comparator (VC) and is a key feature of Insight.
- 1.4 It is recommended that the Community Services Committee:
  - a) Notes the contents of this report and Appendices attached; and
  - b) Agrees that the Insight tool continues to be used by all secondary schools and teaching staff in Argyll and Bute to support improvement in educational outcomes for our young people.

**EDUCATION PERFORMANCE DATA ANALYSIS 2019**

---

**2.0 INTRODUCTION**

- 2.1 The Council received SQA examination results for all pupils entered for formal qualifications in session 2018/2019 on 5<sup>th</sup> September 2019. This provided comprehensive information on the outcome of examination performance for pupils across all Argyll and Bute schools at National 4, National 5, Higher and Advanced Higher levels.
- 2.2 The Insight tool provided data in September 2019 that covered a wide range of SCQF (Scottish Credit and Qualifications Framework) credit-rated awards and programmes.
- 2.3 The Insight tool encourages professional reflection and analysis for intervention and improvement. Schools are compared to a “virtual” comparator allowing users to see how the performance of their pupils compares to a similar group of pupils from across Scotland, and supports collaborative approaches to looking at data and working together as part of the improvement process.

**3.0 RECOMMENDATIONS**

- 3.1 It is recommended that the Community Services Committee:
- a) Notes the contents of this report and Appendices attached; and
  - b) Agrees that the Insight tool continues to be used by all secondary schools and teaching staff in Argyll and Bute to support improvement in educational outcomes for our young people.

**4.0 DETAIL**

- 4.1 Pupils in each of the ten secondary schools in Argyll and Bute in S4–S6 were presented for a range of SQA external examination qualifications in May and June of 2019. Following the release of the results Education Services conducted an initial analysis of the results to support the preparation of a summary report for presentation to and consideration by Elected Members at Committee in September 2019. This can be accessed via the following link:

<https://www.argyll-bute.gov.uk/moderngov/documents/s140243/SQA%20Analysis%20200819%20amended.pdf>

4.2 Appendix 1 provides detail of our performance outcomes within the following measures ie

- Annual Participation Measure
- Skills for Work, Ungraded and Wider Achievement Awards;
- School outcomes at National 5, Higher and Advanced Higher levels in relation to national figures;
- For each school, Breadth and Depth outcomes for National 5 and Higher in relation to Virtual Comparators;
- Literacy and numeracy outcomes;
- Improving attainment for all;
- Attainment versus deprivation;
- Attainment of Care Experienced young people

4.3 The Education Service will continue to take forward its programme of support and challenge with schools across the authority to secure further improvement in attainment and achievement outcomes for pupils.

## **5.0 CONCLUSION**

5.1 This report presents an overview of key performance data and outcomes for all pupils across the ten secondary schools for session 2018-2019 incorporating both SQA and Insight data from an authority perspective.

5.2 In 2019 the performance of Argyll and Bute schools varied across national qualification measures with elements of strong performances in some schools and in some subject departments. Central Officers are taking forward a programme of support and challenge with schools across the authority involving a range of actions and measures to support schools to secure further improvement in examination outcomes for pupils.

5.3 In August/September, the ten secondary Head Teachers met with the Heads of Service and Area Managers to present, discuss and scrutinise their results, forming the basis of an ongoing improvement dialogue throughout the school year.

5.4 Head Teachers will present further detailed analysis of their performance data and outcomes at local Area Committees in December.

## **6.0 IMPLICATIONS**

6.1 Policy – This report links directly to Outcome 3 in the Argyll and Bute Single Outcome Agreement (Education Skills and Training Maximises Opportunities for All). OCTF: Key Objective 1; NIF: Priority 1

6.2 Financial – None

6.3 Legal – None

- 6.4 HR – None
- 6.5 Fairer Scotland Duty
  - 6.5.1 Equalities – None
  - 6.5.2 Socio-economic Duty – None
  - 6.5.3 Islands – Amendments to rezoning policy would apply to Island schools.
- 6.6 Risk – The performance of Argyll and Bute schools in national examinations can significantly enhance or detract from the Council’s reputation and attractiveness as an area to work and live in.
- 6.7 Customer Service – This report provides elected Members with an overview of Service Performance.

**Douglas Hendry, Executive Director with responsibility for Education**

**Cllr Yvonne McNeilly, Policy Lead for Education**

For Further information:

Louise Connor, Head of Service: Education – Learning and Teaching  
[Louise.connor@argyll-bute.gov.uk](mailto:Louise.connor@argyll-bute.gov.uk) / 01631569196

Simon Easton, Education Manager: Performance and Improvement  
[Simon.easton@argyll-bute.gov.uk](mailto:Simon.easton@argyll-bute.gov.uk) / 01436657681

14<sup>th</sup> November 2019

## **APPENDICES**

- Appendix 1 – Performance Data Analysis
- Appendix 2 – Qualifications Overview
- Appendix 3 – Tariff Point Guide

## APPENDIX 1 - Performance Data Analysis

### ANNUAL PARTICIPATION MEASURE

The Participation Measure shows the proportion of 16-19 year olds participating in education, training or employment, including those who are in the senior phase of their secondary education. The 2019 Annual Participation Measure Report showed 94.2% of our young people engaged in education, employment or training against the Scottish average of 91.6%.

Further analysis of the Argyll and Bute data shows a participation rate of 94.2% of which; 2.2% are not participating and 3.0% are unconfirmed. This compares favourably to the Scottish figures of 91.6% participating, 3.1% not participating and 5.3% unconfirmed.

Argyll and Bute Council rank 6<sup>th</sup> in Scotland across all local authorities in terms of participation.

The 2018-2019 Scottish Annual Participation Measure published by Skills Development Scotland can be accessed via the following link:

<http://www.skillsdevelopmentscotland.co.uk/publications-statistics/statistics/annual-participation-measure/?page=1&statisticCategoryId=7&order=date-desc>

### Wider Achievement and Partnership Awards

The achievement of children and young people across Argyll and Bute Council reflects a broad range of national and award-bearing wider achievement qualifications. Schools have worked well to develop a wide range of learning pathways for young people which enables them to achieve a broad range of skills awarded at National 3 (SCQF 3), National 4 (SCQF 4), National 5 (SCQF 5), Higher (SCQF 6), and Advanced Higher (SCQF 7). Appendix 2 provides details of SCQF scale.

### Wider Achievement School Courses

The table below provides data relating to the presentation of young people for wider achievement awards in school. Such awards are not National Qualifications, but, as indicated, carry SCQF values equivalent to National Qualifications.

	SCQF Level 3 (equivalent to National 3)	SCQF Level 4 (equivalent to National 4)	SCQF Level 5 (equivalent to National 5)	SCQF Level 6 (equivalent to Higher)	SCQF Level 7 (equivalent to Advanced Higher)	Total
Number of entries	57	110	125	128	0	420
Number of	54	91	99	71	0	315

candidates achieving certification						
Percentage of candidates achieving certification	95%	83%	79%	55%	0	75% of entries achieved certification

### Wider Achievement Partnership Courses

The table below provides data relating to the presentation of young people for wider achievement awards delivered out of school. Such courses and achievement opportunities are offered through school partners such as colleges or schools both within and beyond Argyll and Bute. Such awards are not National Qualifications, but, as indicated, carry SCQF values equivalent to National Qualifications.

The above data reflects the increasing trend in the provision to young people of Wider Achievement opportunities in school and through partnership. In 2018/19, 62 more young people achieved certification in Wider Achievement courses across Argyll and Bute than in 2017/18. This is in keeping with the authority's priority to extend the variety of progression pathways open to young people.

	SCQF Level 3 (equivalent to National 3)	SCQF Level 4 (equivalent to National 4)	SCQF Level 5 (equivalent to National 5)	SCQF Level 6 (equivalent to Higher)	SCQF Level 7 (equivalent to Advanced Higher)	Total
Number of entries	20	199	192	87	16	514
Number of candidates achieving certification	19	158	111	48	8	344
Percentage of candidates achieving certification	95%	79%	58%	55%	50%	67% of entries achieved certification

## OUTCOMES IN NATIONAL QUALIFICATIONS 2018-2019

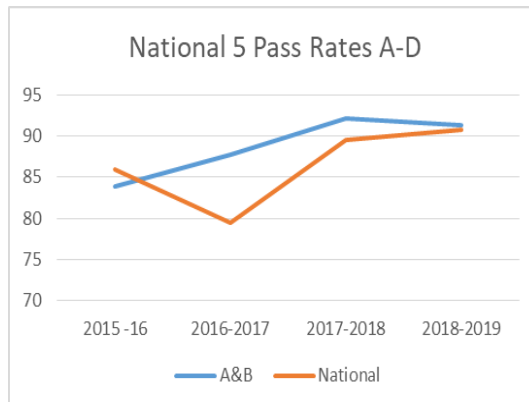
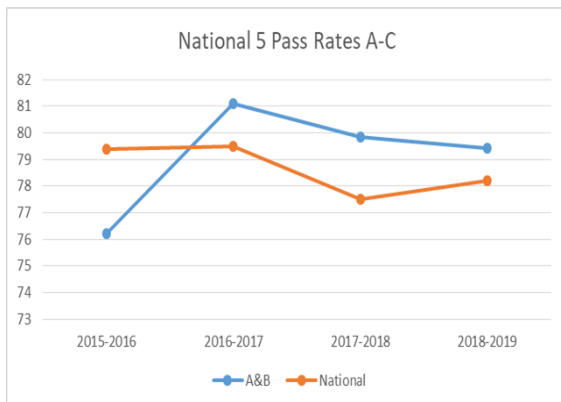
As presented to Committee in September the outcome of the initial SQA examination results for pupils in academic year 2018/19 ie

- i. National 4 results are above the national outcome by 11.50% in 2019.
- ii. National 5 (A-C) results are above the national outcome by 1.2% in 2019.
- iii. Higher (A-C) results are below the national outcome by -1.6% in 2019. There is a national dip in the 2019 higher results.
- iv. Advanced Higher (A-C) results are below the national outcome by -3.7% in 2019.

## OUTCOMES IN NATIONAL QUALIFICATIONS - 2016-2019

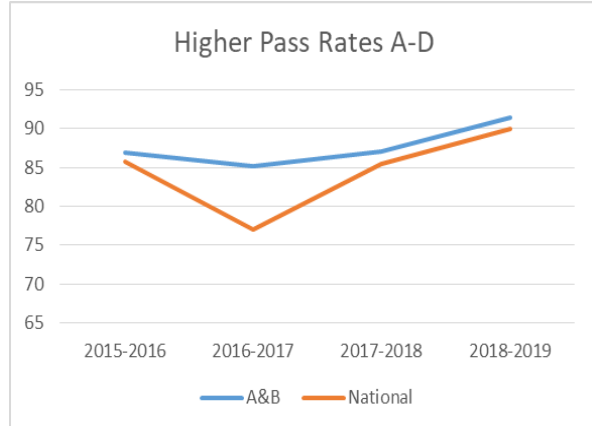
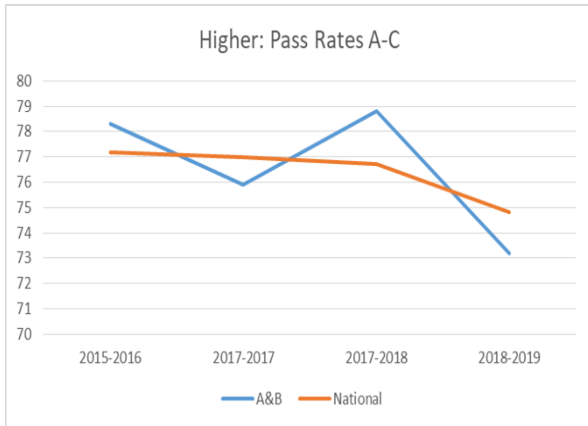
### National 5:

National 5 A-C and A-D pass rates in Argyll and Bute remain greater than the national average. This continues the trend of the past two years.



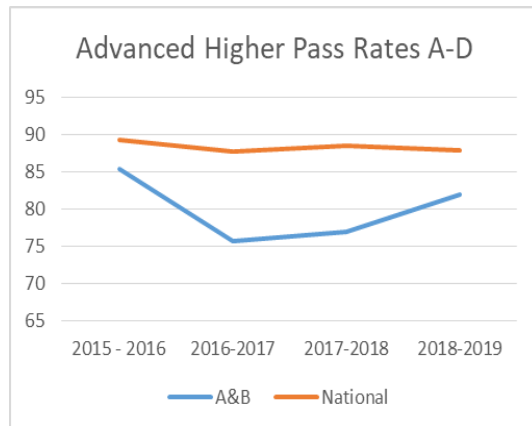
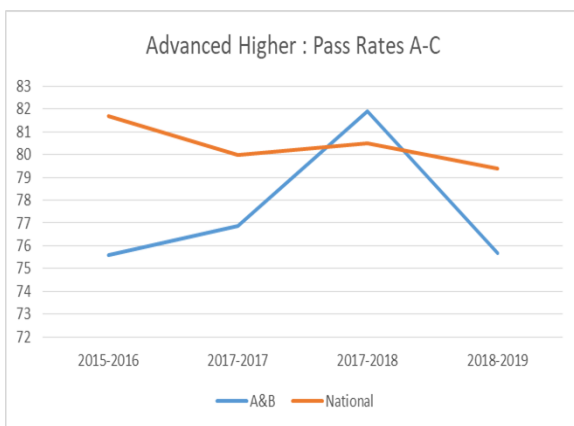
## HIGHER

Higher A-C pass rates in Argyll and Bute fell in line with the trend nationally, and in doing so, fell below the national average figure. Higher passes at A-D in Argyll and Bute increased in 2018-2019 and remain above the national average.



## ADVANCED HIGHER

Advanced Higher passes fell in 2018-2019, reflecting the national trend, and in doing so, fell below the national average figure. Advanced Higher passes at A-D rose in 2018-19, continuing an upward trend over the last two years.





## INSIGHT – ANALYSIS OF LOCAL DATA

### 2019 – SCQF LEVELS 5 and 6 – Breadth and Depth

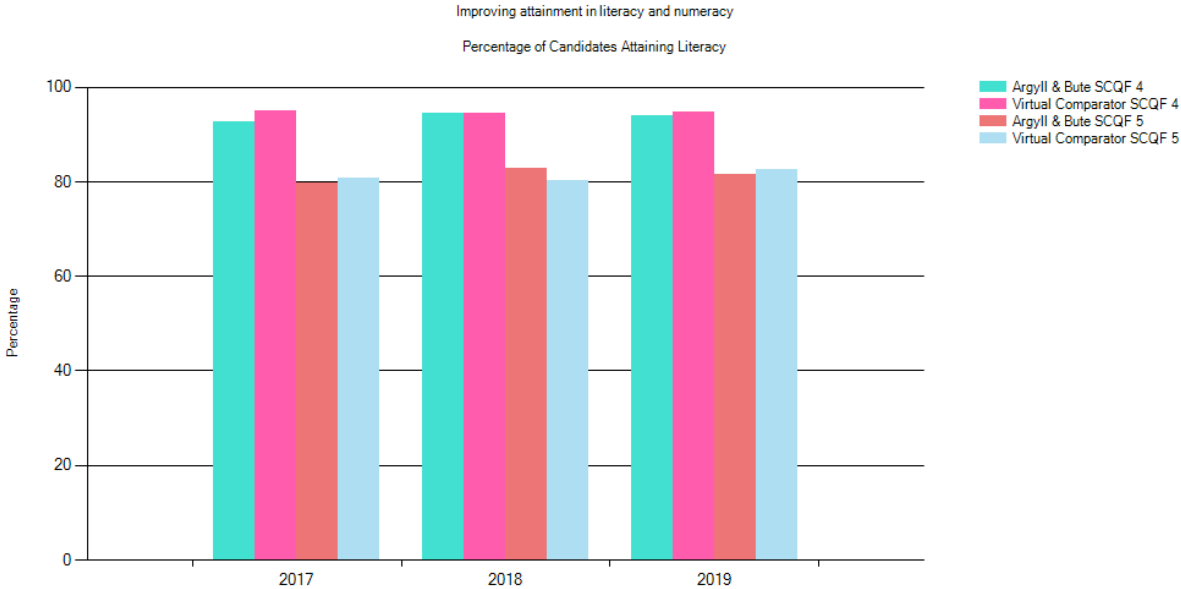
#### Summary:

The tables below demonstrate the percentage of young people in Argyll and Bute gaining 1, 3 and 5 qualifications at SCQF levels 5 and 6 (National 5 and Higher). It can be seen that a greater number of Argyll and Bute's secondary schools equip young people with one National 5 or Higher qualification than Virtual Comparator schools (figures have been rounded up or down to the nearest percent).

	% 1@ SCQF 5		% 3@ SCQF 5		% 5@ SCQF 5	
	school	VC	school	VC	school	VC
<b>Campbeltown Grammar School</b>	90	83	67	69	53	55
<b>Dunoon Grammar School</b>	94	83	78	71	71	58
<b>Hermitage Academy</b>	94	93	87	85	77	74
<b>Islay High School</b>	84	90	68	80	64	69
<b>Lochgilphead Joint Campus</b>	86	91	68	81	56	67
<b>Oban High School</b>	91	87	80	75	64	62
<b>Rothesay Academy</b>	88	88	74	76	60	62
<b>Tarbert Academy</b>	89	88	67	74	56	59
<b>Tiree High School</b>	100	83	100	70	75	63
<b>Tobermory High School</b>	96	90	92	80	84	73

	% 1@ SCQF6		% 3@ SCQF 6		% 5@ SCQF 6	
	school	VC	school	VC	school	VC
<b>Campbeltown Grammar School</b>	52	57	37	43	27	28
<b>Dunoon Grammar School</b>	70	59	47	43	32	30
<b>Hermitage Academy</b>	78	75	65	59	47	43
<b>Islay High School</b>	66	69	43	55	34	39
<b>Lochgilphead Joint Campus</b>	52	69	36	52	19	36
<b>Oban High School</b>	68	64	52	48	32	32
<b>Rothesay Academy</b>	63	63	42	48	26	33
<b>Tarbert Academy</b>	67	62	33	50	28	34
<b>Tiree High School</b>	75	60	75	45	0	28
<b>Tobermory High School</b>	88	72	60	61	36	48

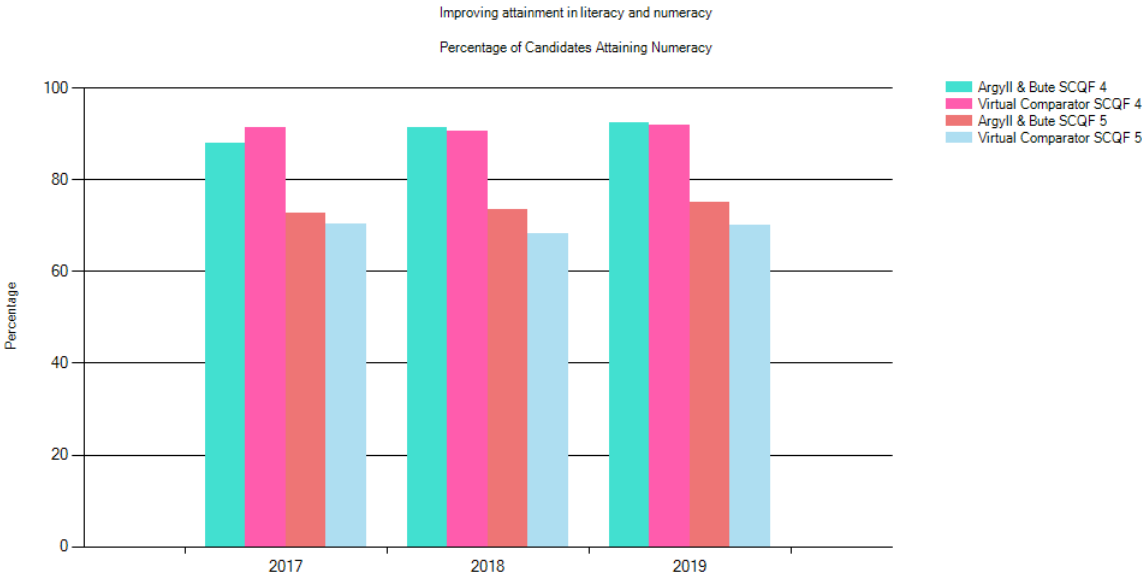
## Literacy (for S6 pupils based on the S4 roll)



### Summary:

Attainment in Literacy at both SCQF levels 4 and 5 fell marginally in 2019, and are marginally below Virtual Comparator levels. 2019 performance still represents an improving trend.

## 5.1.2 Numeracy (for S6 pupils based on the S4 roll)

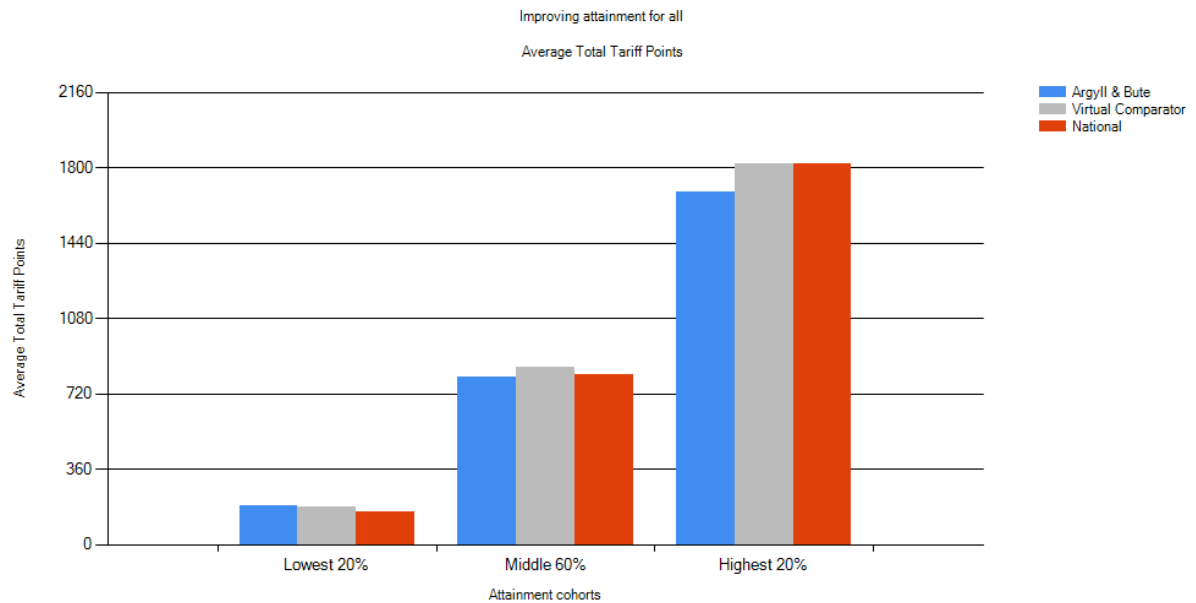


### Summary:

Attainment in Numeracy at both SCQF levels 4 and 5 has increased consistently over the last three years, and has continued to exceed the attainment of virtual comparators.

## Improving attainment for all (S6 pupils based on the S4 roll)

### Total Tariff Points

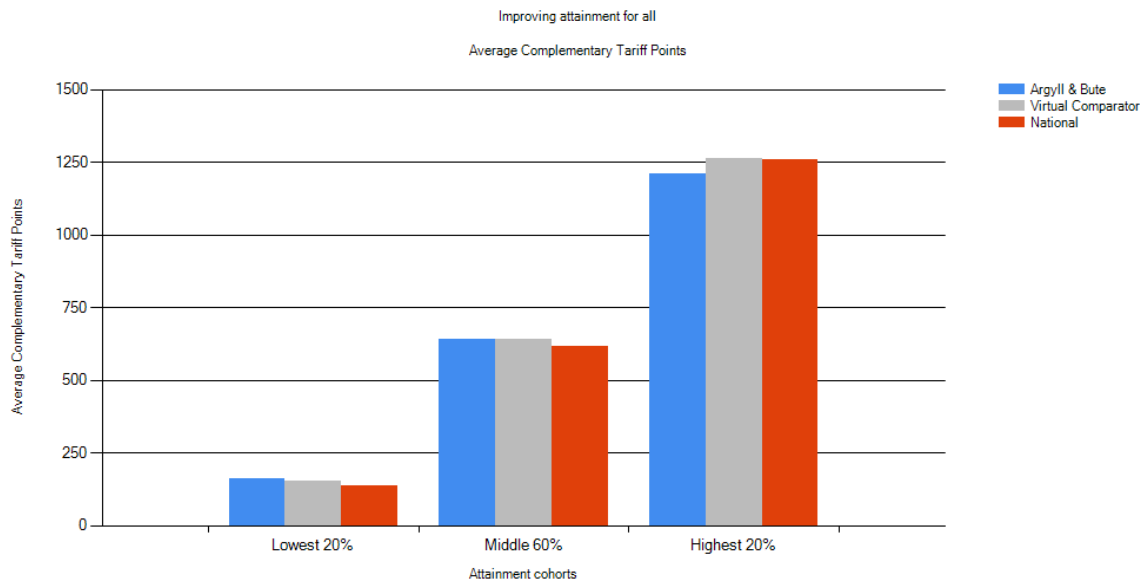


### Summary:

The table above shows that in 2019 the performance across:

- Argyll and Bute pupils in the lowest 20% of attainment performed better than both the national average and the Virtual Comparator.
- Argyll and Bute pupils in the Middle 60% of attainment performed marginally below the national average and the Virtual Comparator.
- Argyll and Bute pupils in the Highest 20% of attainment performed below the national average and below the Virtual Comparator.

## Complementary Tariff Points



### Summary:

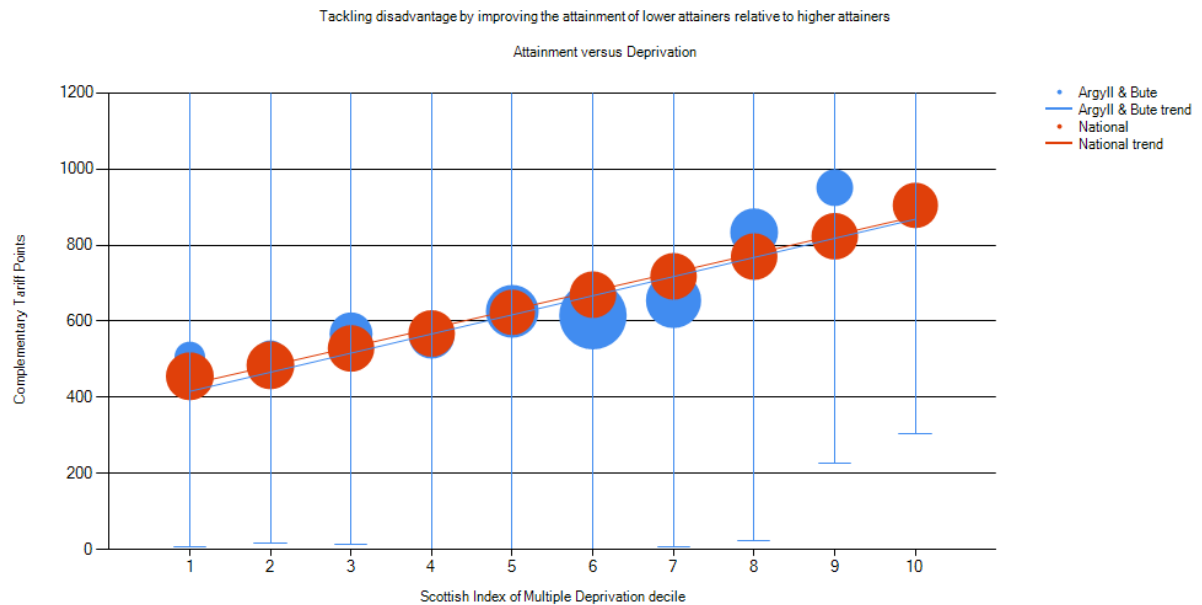
It is useful to consider the complementary tariff points as they offer a fairer “like for like” comparison across different authorities and schools with a range of curricular models.

The data above shows that in 2019 the performance across the Lowest 20% and the Middle 60% in Argyll and Bute was above the national average and above or equal to the Virtual Comparator. The Highest 20% of attainment in Argyll and Bute is slightly below both the national average and the Virtual Comparator.

For an outline of tariff point values for different levels of national awards and different grades see Appendix 2. As a quick reference 5 grade As at Higher is 1020 points compared with 5 grade Cs which is 800 points, 6 grade As at National 5 is 504 points, 4 units at National 4 and 2 units at National 5 is 154 points. It is important to note that schools offer some course options that do not attract tariff points but positively impact on life chances eg Duke of Edinburgh Award.

## Attainment versus deprivation (S6 pupils based on the S4 roll)

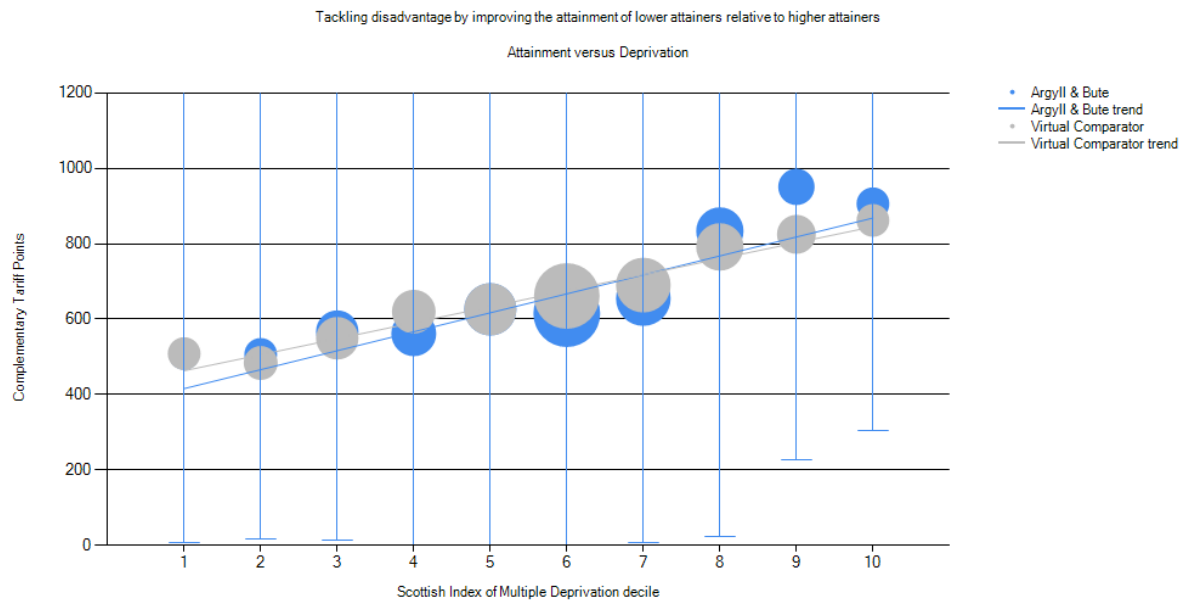
### Argyll and Bute v National



### **Summary:**

The 2019 data in the graph above shows the average **complementary tariff** points achieved by pupils in each of the 10 Scottish index of multiple deprivation (SIMD) cohorts in Argyll and Bute compared with the National data. Argyll and Bute candidates in SIMD deciles 1, 3, 8 and 9 are outperforming young people nationally. In SIMD deciles 6 and 7, young people's performance in Argyll and Bute was marginally below the average national level. The overall trend in Argyll and Bute is almost identical to the national trend.

## Argyll and Bute v Virtual Comparator



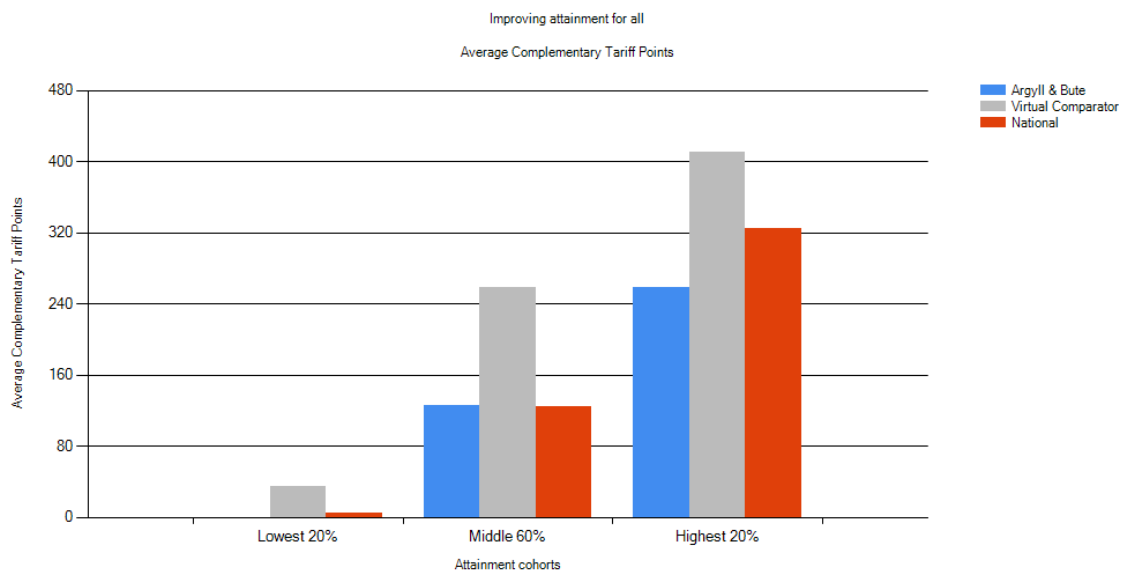
### Summary:

The 2019 data in the graph above shows the average **complementary tariff** points achieved by pupils in each of the 10 Scottish index of multiple deprivation (SIMD) cohorts in Argyll and Bute compared with the Virtual Comparator data. Pupils in SIMD 8, 9 and 10 are outperforming their Virtual Comparator equivalents, while pupils in SIMD 4, 6 and 7 are underperforming slightly compared with the Virtual Comparator. Above SIMD decile 7, the performance trend in Argyll and Bute is higher than the national trend.

## Attainment of Care Experienced Young People (S4)

In Argyll and Bute, there were 13 Looked After young people in S4 in 2018/19

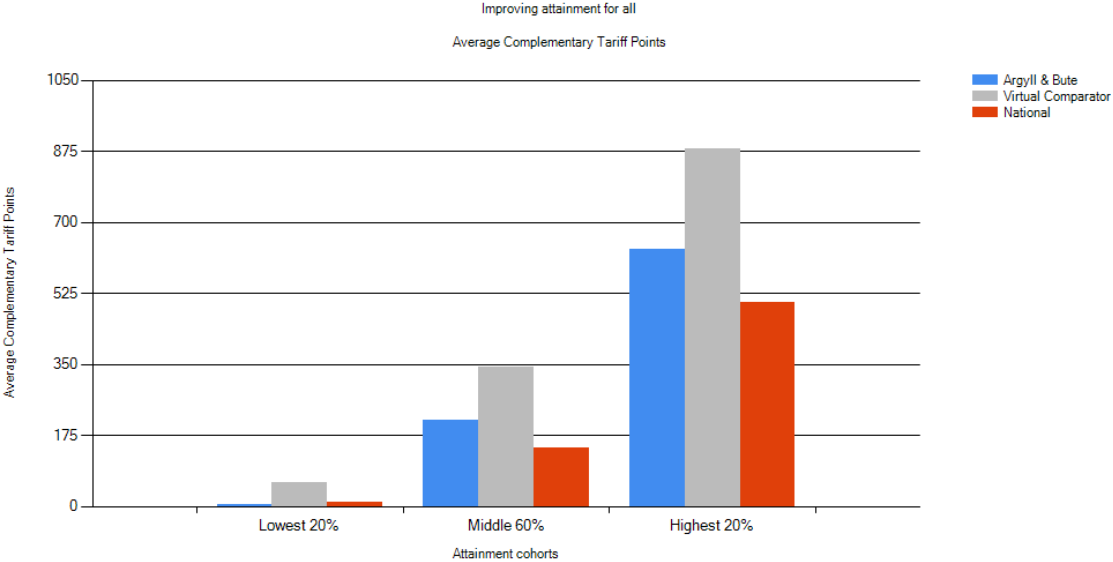
The table below demonstrates that, in S4, the middle 60% of Argyll and Bute's Looked After young people outperformed the average for Looked After young people nationally. It can be seen that in 2019, the performance of the top 20% attaining Looked After young people in Argyll and Bute was less than both the Virtual Comparator figure and the national average.



# Attainment of Care Experienced Young People (S5)

In Argyll and Bute, there were 12 Looked After young people in S5 in 2018/19.

The table below demonstrates that in both the middle 60% and top 20% attaining pupils outperformed the national average for attainment. For all groups of Looked After pupils, the Virtual Comparator figure was greater than both the Argyll and Bute and the national figures.





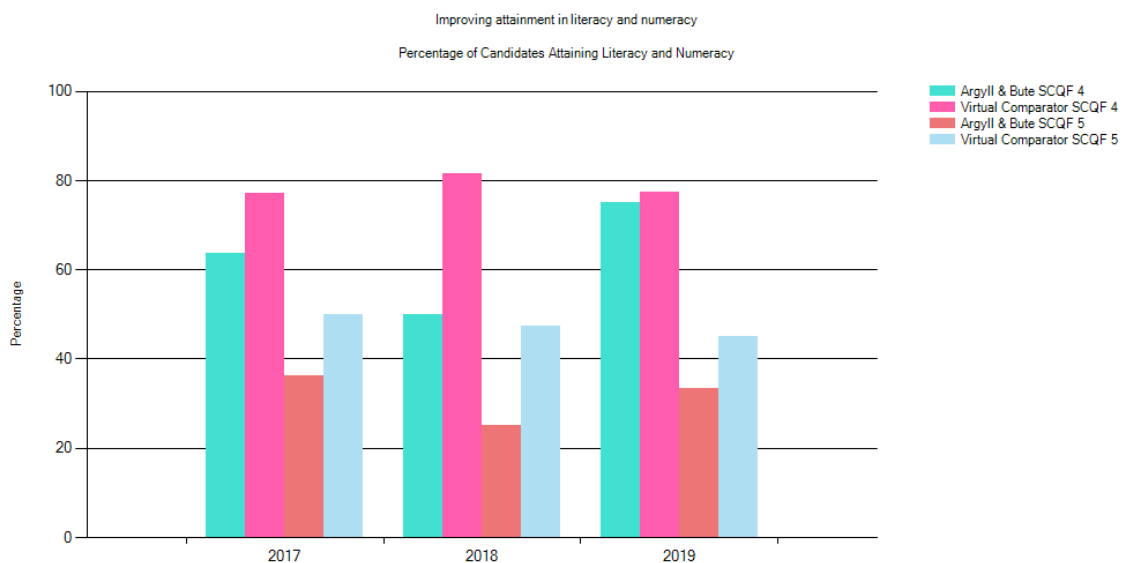
## Attainment of Care Experienced Young People in Literacy and Numeracy (S4 and S5)

The graphs below demonstrate that, in 2018/19, the performance of S4 and S5 Looked After young people in Literacy and Numeracy was less than the Virtual Comparator. The fact that the cohort of young people is so small makes it difficult to attach significance to the trends over time noted below.

### S4



### S5



Provision to and the attainment performance of Looked After children is being examined closely by the Central Team with a view to bringing about improvement.

## Appendix 2: Qualifications overview

<b>SCQF (Scottish Credit Qualifications Framework)</b>	<b>National Qualifications</b>
1 and 2	National 1 and National 2
3	National 3
4	National 4
5	National 5
6	Higher
7	Advanced Higher

### Appendix 3 - Tariff point guide:

SCQF Level	Grade	SCQF Points	Tariff Score
7	A	32	480
	B	32	440
	C	32	400
	D	32	380
	Individual units	17/2*SCQF Points Varies (6)	Usually 51
6	A	24	204
	B	24	182
	C	24	160
	D	24	149
UNGRADED COURSE	EG Scottish studies award	24	160
	Individual units	14/3*SCQF Points Varies (6)	Usually 28
5	A	24	84
	B	24	74
	C	24	64
	D	24	59
	Individual units	11/6*SCQF Points Varies	11
4	Course – Pass	24	33
	Added value unit	6	15
	Individual units	1*SCQF Points Varies	6
3	Total units	18	12
	Individual units	2/3*SCQF Points	4
2	Total units	18	6
	Individual units	1/3*SCQF Points	2
1	Individual units	6	1