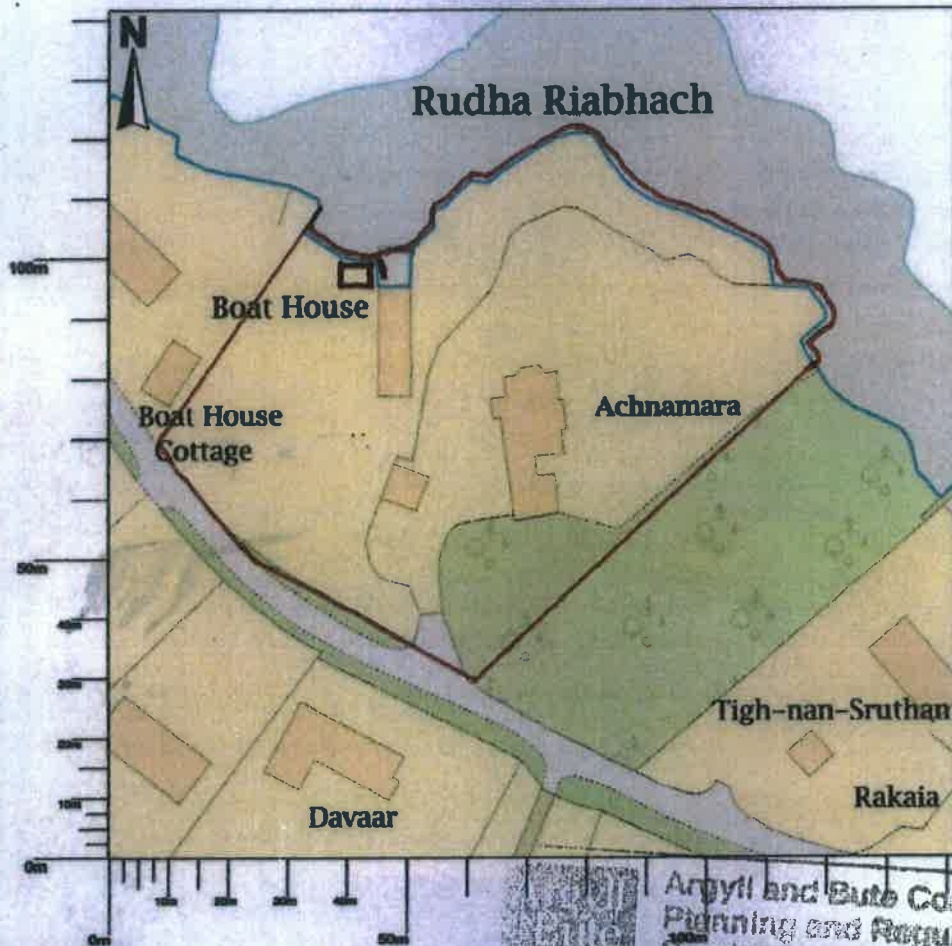




## Achnamara, Connel, Oban, PA37 1PT



Scale 1:1250

ARGYLL AND BUTE COUNCIL  
 This plan been APPROVED by the  
 PLANNING AUTHORITY and MUST be read in  
 conjunction with the Planning Conditions of  
 Consent No:

17/01269/PP

*Angus J. Stewart*

Head of Planning and Regulatory Services

Map shows area bounded by: 190395.3, 734067.3, 190536.7, 734208.7 (at a scale of 1:1250) The representation of a road, track or path is no evidence of a right of way. The representation of features as lines is no evidence of a property boundary.

Produced on 09 May 2017 from the Ordnance Survey National Geographic Database and incorporating surveyed revision available at this date. Reproduction in whole or part is prohibited without the prior permission of Ordnance Survey. © Crown copyright 2017. Supplied by UKPlanningMaps.com a licensed Ordnance Survey partner (100054135). Unique plan reference: p2b/160578/220674

Ordnance Survey and the OS Symbol are registered trademarks of Ordnance Survey, the national mapping agency of Great Britain. UKPlanningMaps logo and other designs are Copyright © copla ltd 2017

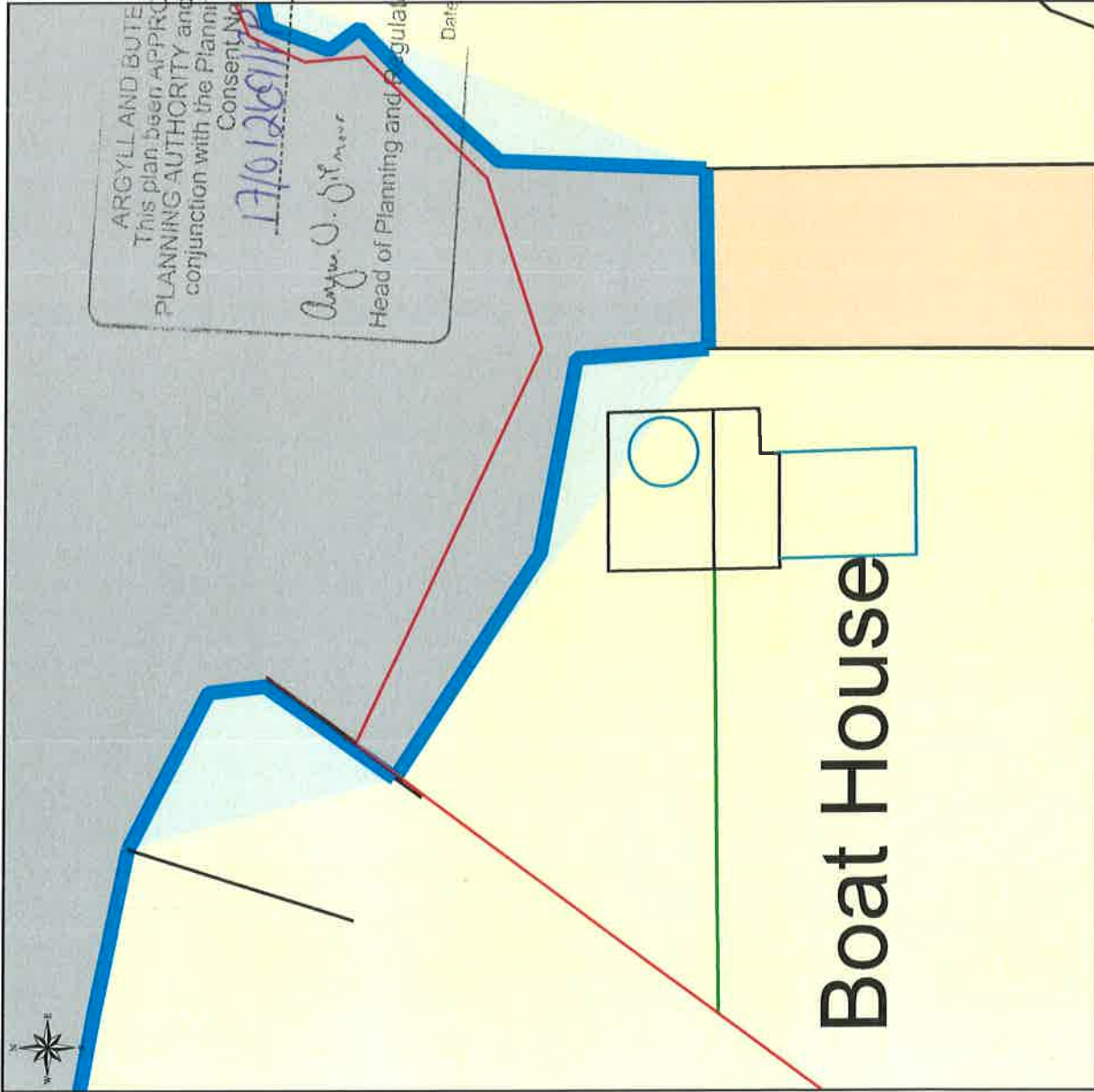
Argyll and Bute Council  
 Planning and Regulatory  
 Services

Application ref no: 17/01269/PP  
 Date received: 13.06.17

Plan no: 1 of 6  
 PO. Initials: JS

AA

# Location Plan PA37 1PT



ARGYLL AND BUTE COUNCIL  
This plan has been APPROVED by the  
PLANNING AUTHORITY and MUST be read in  
conjunction with the Planning Conditions of  
Consent No.  
17/01269/17  
*Angus J. Gilmore*  
Head of Planning and Regulatory Services  
Date: 2.10.17

Argyll and Bute Council  
Planning and Regulatory  
Services

Application ref no: 17/01269/17  
Date received: 13-6-17

Plan no: 2 of 6  
P.O. Initials: SS

This Plan includes the following Licensed Data: OS MasterMap Colour PDF Location Plan by the Ordnance Survey National Geographic Database and incorporating surveyed revision available at the date of production. Reproduction in whole or in part is prohibited without the prior permission of Ordnance Survey. The representation of a road, track or path is no evidence of a right of way. The representation of features, as lines is no evidence of a property boundary. © Crown copyright and database rights, 2017. Ordnance Survey 0100031673

Scale: 1:200, paper size: A4

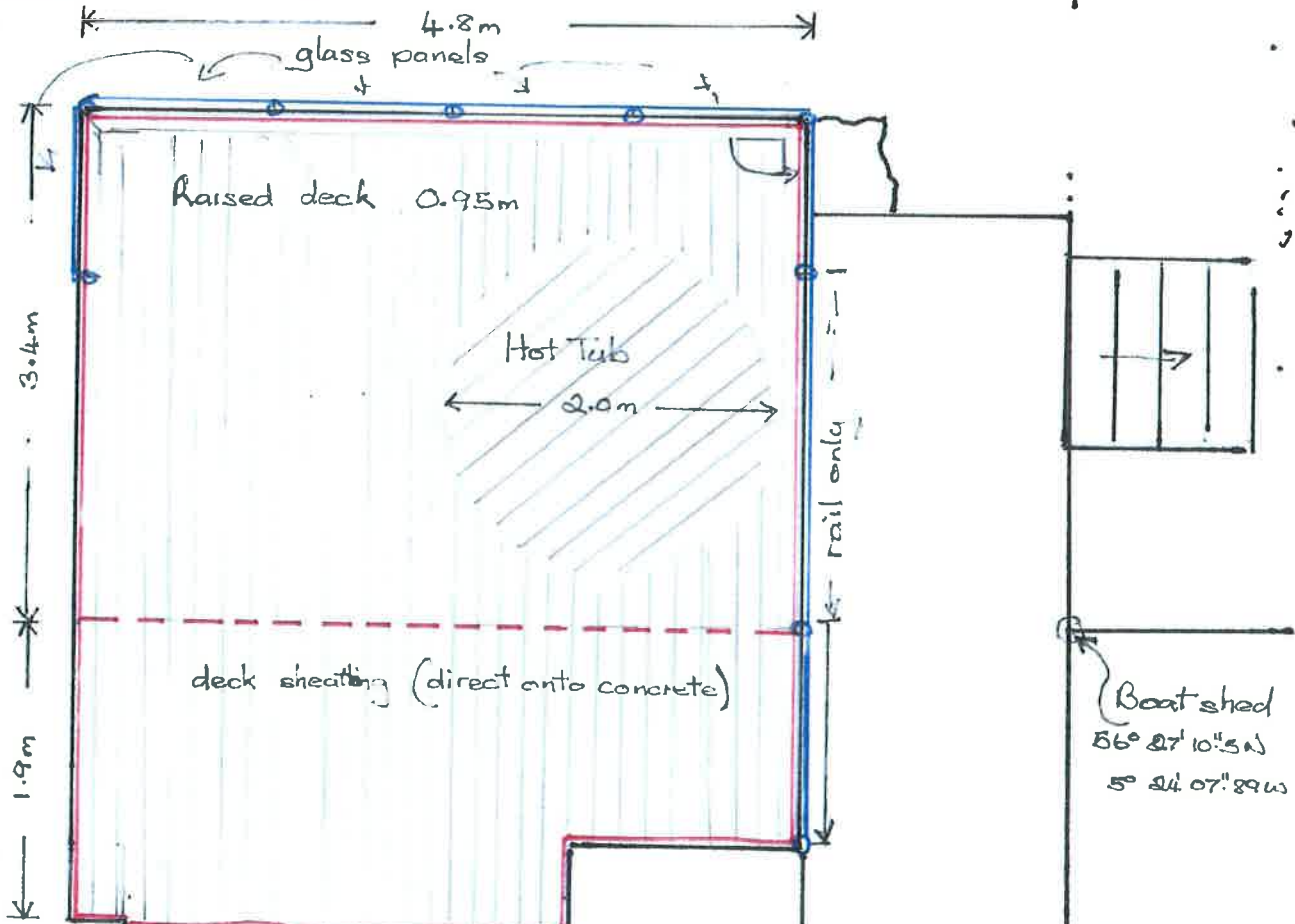
A4

plans ahead by emapsitx

ACHNAMARA  
OLD SWIRE ROAD  
PA371PT

SHORE Front Hot Tub &  
decking

Plan view



Argyll and Bute Council  
Planning and Regulatory  
Services

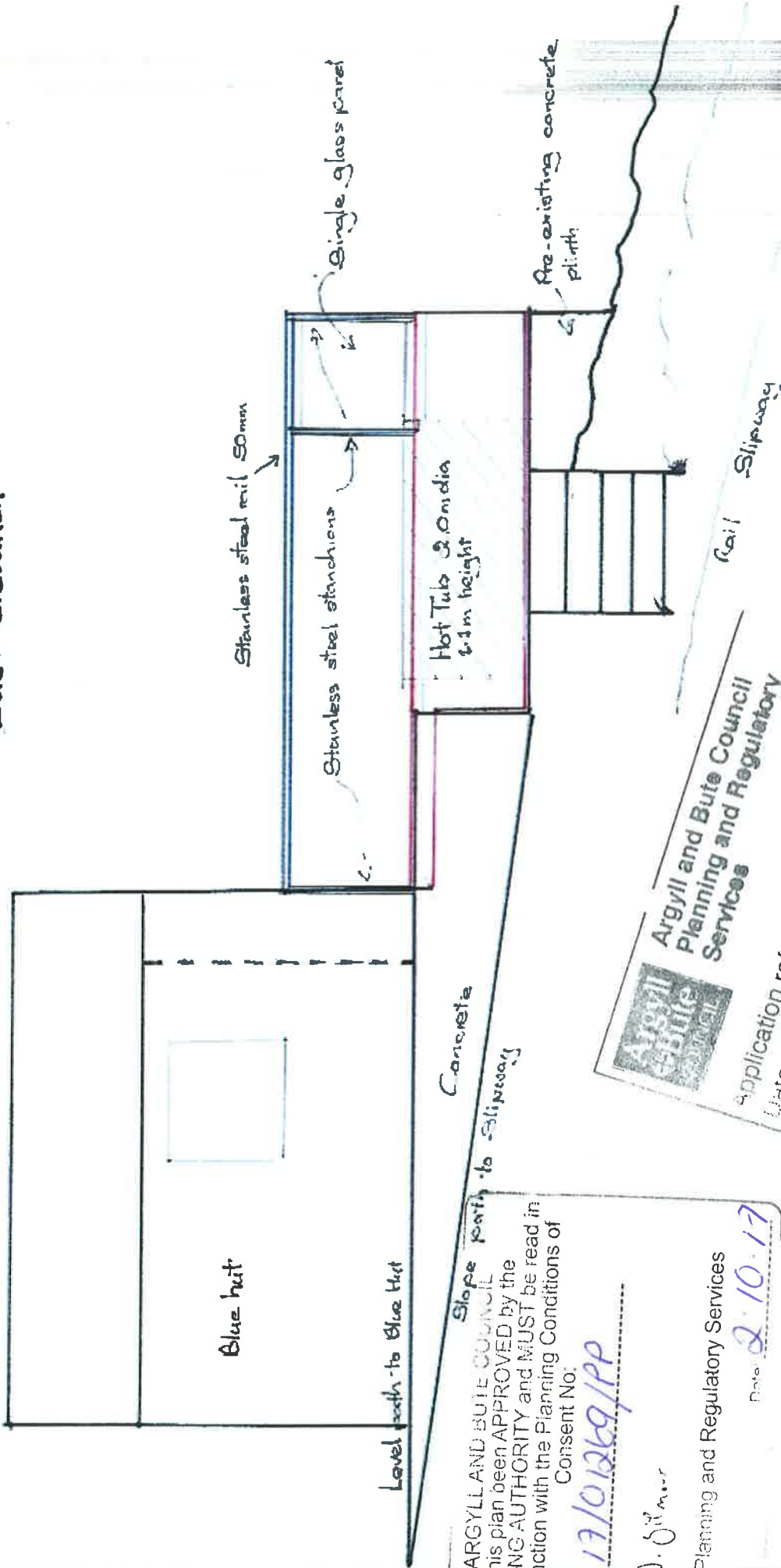
Application ref no: 17/01269/PP  
Date received: 13.6.17  
Plan no: 4 of 6  
P.O. Initials: SS

ARGYLL AND BUTE COUNCIL  
This plan been APPROVED by the  
PLANNING AUTHORITY and MUST be read in  
conjunction with the Planning Conditions of  
Consent No:  
17/01269/PP  
Argyll O. Dillamore  
Head of Planning and Regulatory Services  
Date: 2.10.17

2.0 m  
Scale 50:1

A4

# East elevation

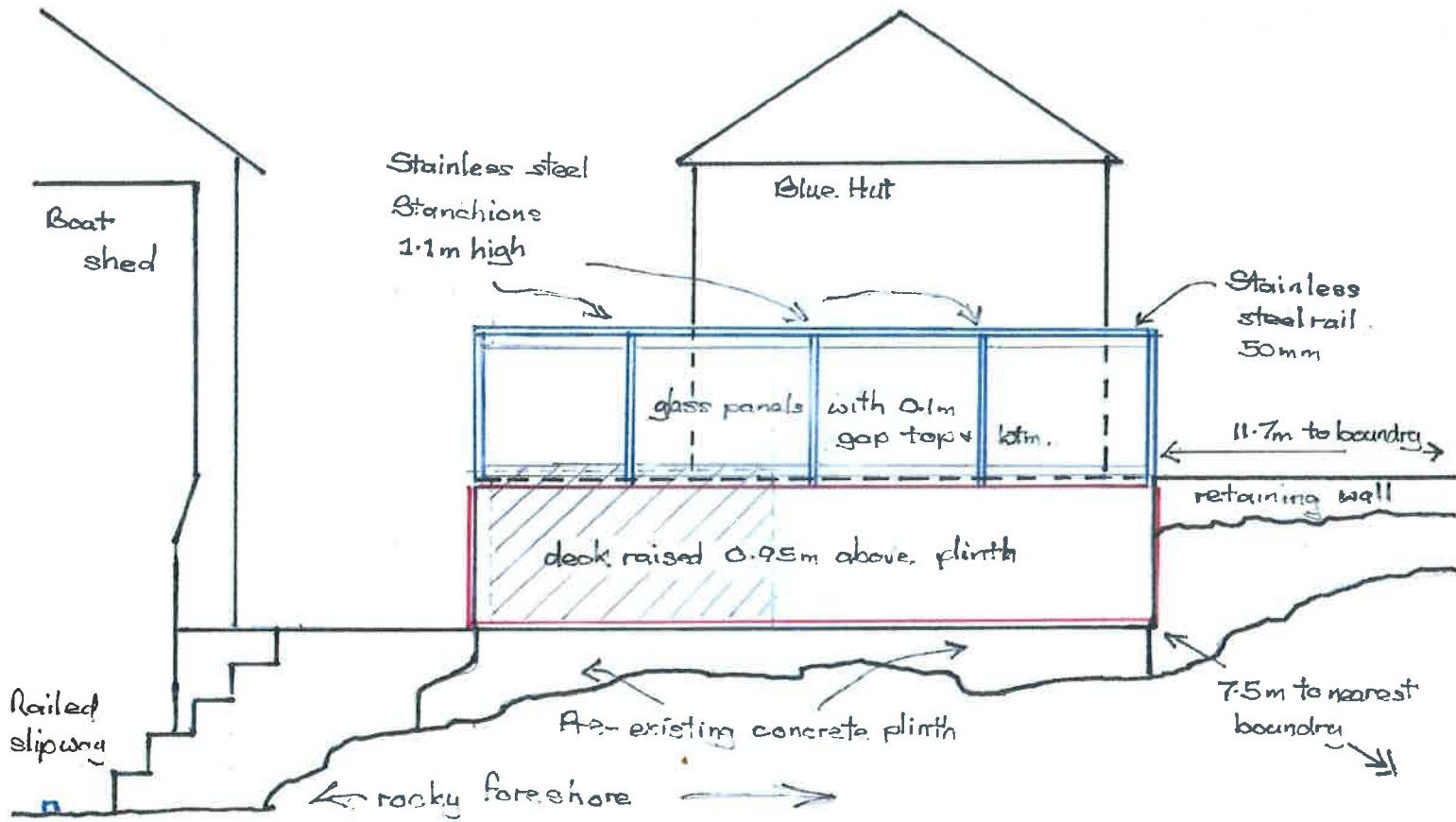


ARGYLL AND BUTE COUNCIL  
 This plan has been APPROVED by the  
 PLANNING AUTHORITY and MUST be read in  
 conjunction with the Planning Conditions of  
 Consent No:  
17/01269/PP  
 Angus J. Gilman  
 Head of Planning and Regulatory Services  
 Date: 2.10.17

Argyll and Bute Council  
 Planning and Regulatory  
 Services  
 Application ref no: 17/01269/PP  
 Date received: 13.09.17  
 Man no: 506  
 Initials: JJ

Achnamara Old Shore Rd. Connell.  
 Hot tubs raised decking 08.05.2017  
 Scale 50:1 6 1 1 2

North elevation



Argyll and Bute Council  
 Planning and Regulatory  
 Services

Application ref no: 17/0269/PP  
 Date received: 13.6.17

Plan no: 6 of 6  
 P.O. Initials: SS

Achnamara, Old Shore Rd, Connel

Hot Tub & Raised decking 22.05.2017

Scale: 50:1



ARGYLL AND BUTE COUNCIL  
 This plan been APPROVED by the  
 PLANNING AUTHORITY and MUST be read in  
 conjunction with the Planning Conditions of  
 Consent No:  
 17/0269/PP

Angus J. Gilmore  
 Head of Planning and Regulatory Services  
 2.10.17

(A4)