

Fifth Statutory Review of Electoral Arrangements - Final Recommendations

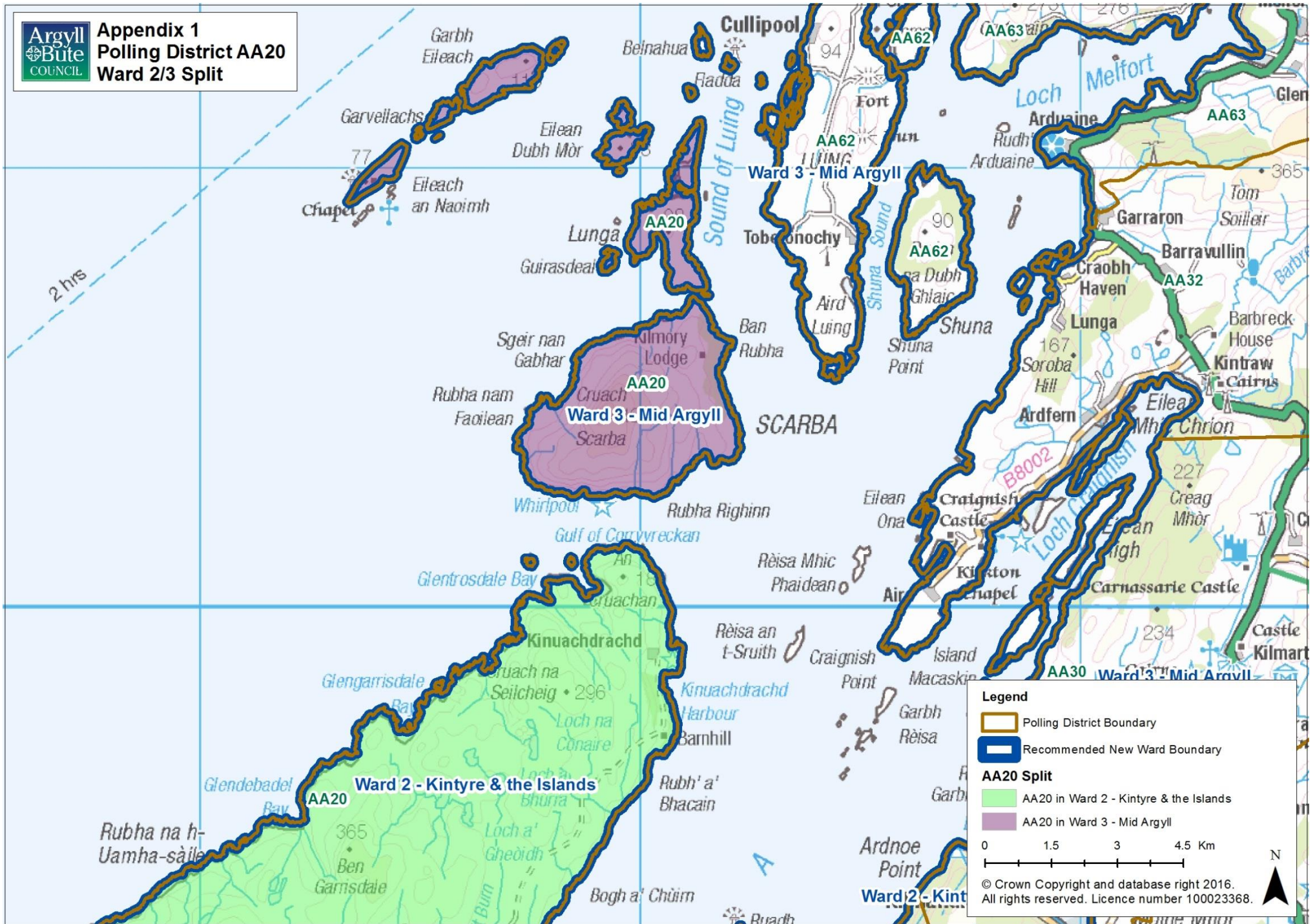
Polling Scheme

<i>New Ward</i>	<i>Old Ward</i>	<i>Polling District(s)</i>	<i>Notes</i>
Ward 1 – South Kintyre	Ward 1 – South Kintyre	AA01, AA02, AA03, AA04, AA05, AA06, AA07	
	Ward 2 – Kintyre & the Islands	AA08, AA11, AA12	Minor cartographic changes to AA08
Ward 2 – Kintyre & the Islands	Ward 2 – Kintyre & the Islands	AA09, AA10, AA13, AA14, AA15, AA16, AA17, AA18, AA19, AA20 (part), AA21	See Appendix 1 for AA20 split; Minor cartographic changes to AA09
	Ward 3 – Mid Argyll	AA23, AA24, AA25, AA26, AA27 (part)	See Appendix 2 for AA27 split
Ward 3 – Mid Argyll	Ward 2 – Kintyre & the Islands	AA20 (part)	See Appendix 1 for AA20 split
	Ward 3 – Mid Argyll	AA27 (part), AA28, AA29, AA30, AA31, AA32, AA33, AA34	See Appendix 2 for AA27 split
	Ward 5 – Oban North & Lorn	AA56 (part), AA59, AA60, AA61, AA62, AA63, AA65, AA68	See Appendix 3 for AA56 split; Minor cartographic changes to AA59 and AA68
Ward 4 – Oban South & the Isles	Ward 4 – Oban South & the Isles	AA36, AA37, AA38, AA39, AA42, AA43, AA44, AA45, AA46, AA47, AA48, AA49, AA50, AA51, AA52, AA53	
Ward 5 – Oban North & Lorn	Ward 5 – Oban North & Lorn	AA55, AA56 (part), AA57, AA58, AA64, AA66, AA67, AA69, AA70, AA72, AA73, AA74	See Appendix 3 for AA56 split; Minor cartographic changes to AA58 and AA66
Ward 6 – Dunoon	Ward 6 – Cowal	AA83, AA83A, AA87	Minor cartographic changes to AA87
	Ward 7 – Dunoon	AA89, AA90, AA91, AA92, AA93	
Ward 7 – Bute & Cowal	Ward 6 – Cowal	AA75, AA76, AA77, AA78, AA79, AA80, AA81, AA82, AA84, AA85, AA86	Minor cartographic changes to AA77, AA78 and AA84
	Ward 8 - Bute	AA94, AA95, AA96, AA97, AA98	

<i>New Ward</i>	<i>Old Ward</i>	<i>Polling District(s)</i>	<i>Notes</i>
Ward 8 – Lomond North	Ward 9 - Lomond North	AD01, AD02, AD03, AD04, AD05, AD06, AD07, AD08, AD09, AD10	Minor cartographic changes to AD10
	Ward 11 – Helensburgh & Lomond South	AD24	
Ward 9 – Helensburgh Central	Ward 10 – Helensburgh Central	AD14, AD15, AD16, AD17 (part), AD18	See Appendix 4 for AD17 split
	Ward 11 – Helensburgh & Lomond South	AD21, AD22	Minor cartographic changes to AD22
Ward 10 – Helensburgh & Lomond South	Ward 10 – Helensburgh Central	AD12, AD13, AD17 (part)	See Appendix 4 for AD17 split
	Ward 11 – Helensburgh & Lomond South	AD20, AD23	Minor cartographic changes to AD20

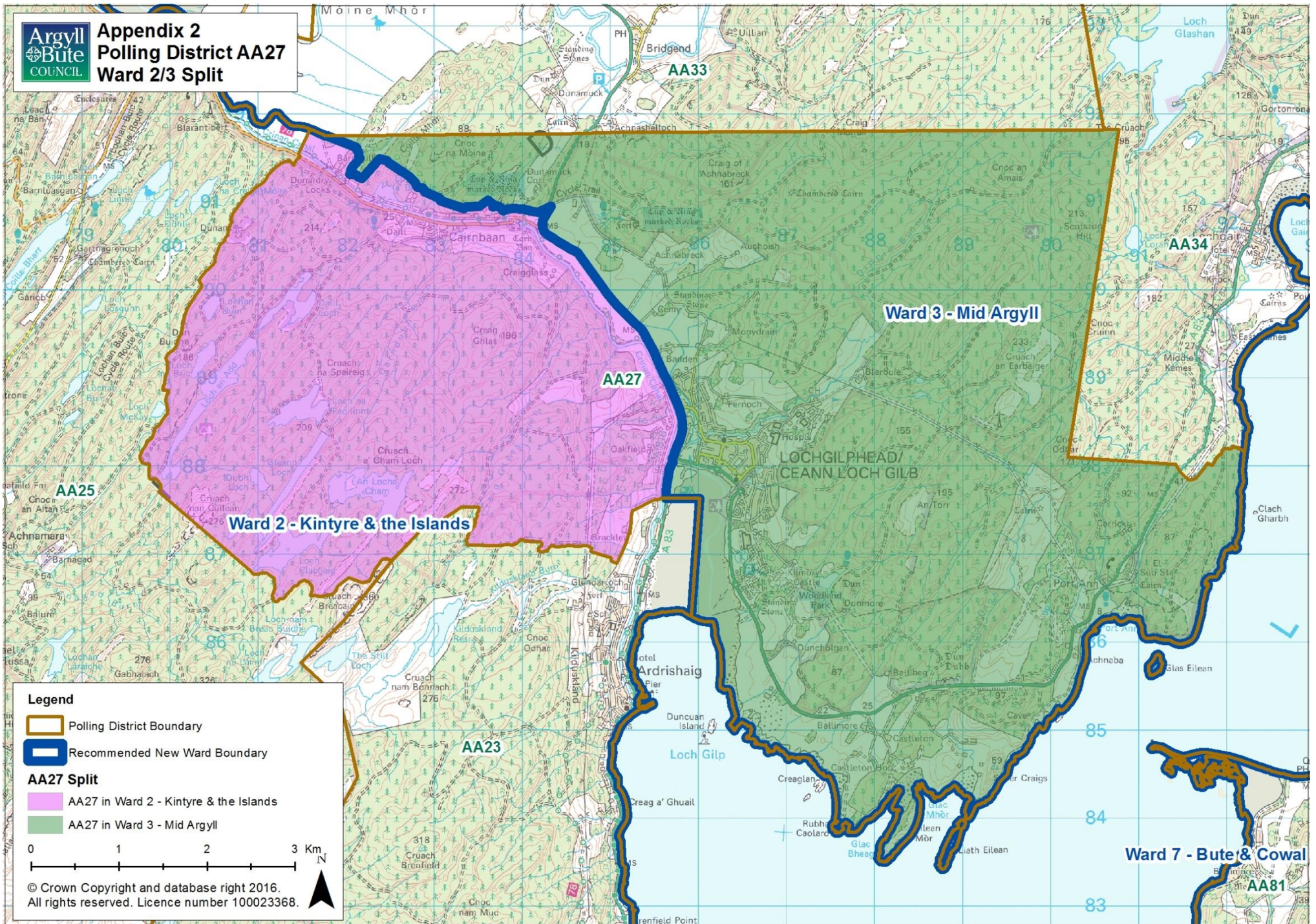
Summary of split Polling Districts

<i>Polling District</i>	<i>New Ward</i>	<i>Description of split</i>	<i>Electors (LGBC 2013 postcode based figures)</i>	<i>Electors (ER 2015 property based figures)</i>
AA20	Ward 2 – Kintyre & the Islands	Isle of Jura only	167	168
	Ward 3 – Mid Argyll	Scarba, Lunga and the Garvallachs	0	0
AA27	Ward 2 – Kintyre & the Islands	West of A816 including all of Cairnbaan	128	175
	Ward 3 – Mid Argyll	Lochgilphead, Castleton, Port Ann	2064	2146
AA56	Ward 3 – Mid Argyll	Cladich area	41	48
	Ward 5 – Oban North & Lorn	Dalmally, Stronmilchan, Glen Orchy, Glen Lochy	307	318
AD17	Ward 9 – Helensburgh Central	West and north of Victoria Street and Sinclair Street	493	472
	Ward 10 – Helensburgh & Lomond South	East and south of Victoria Street and Sinclair Street	544	438



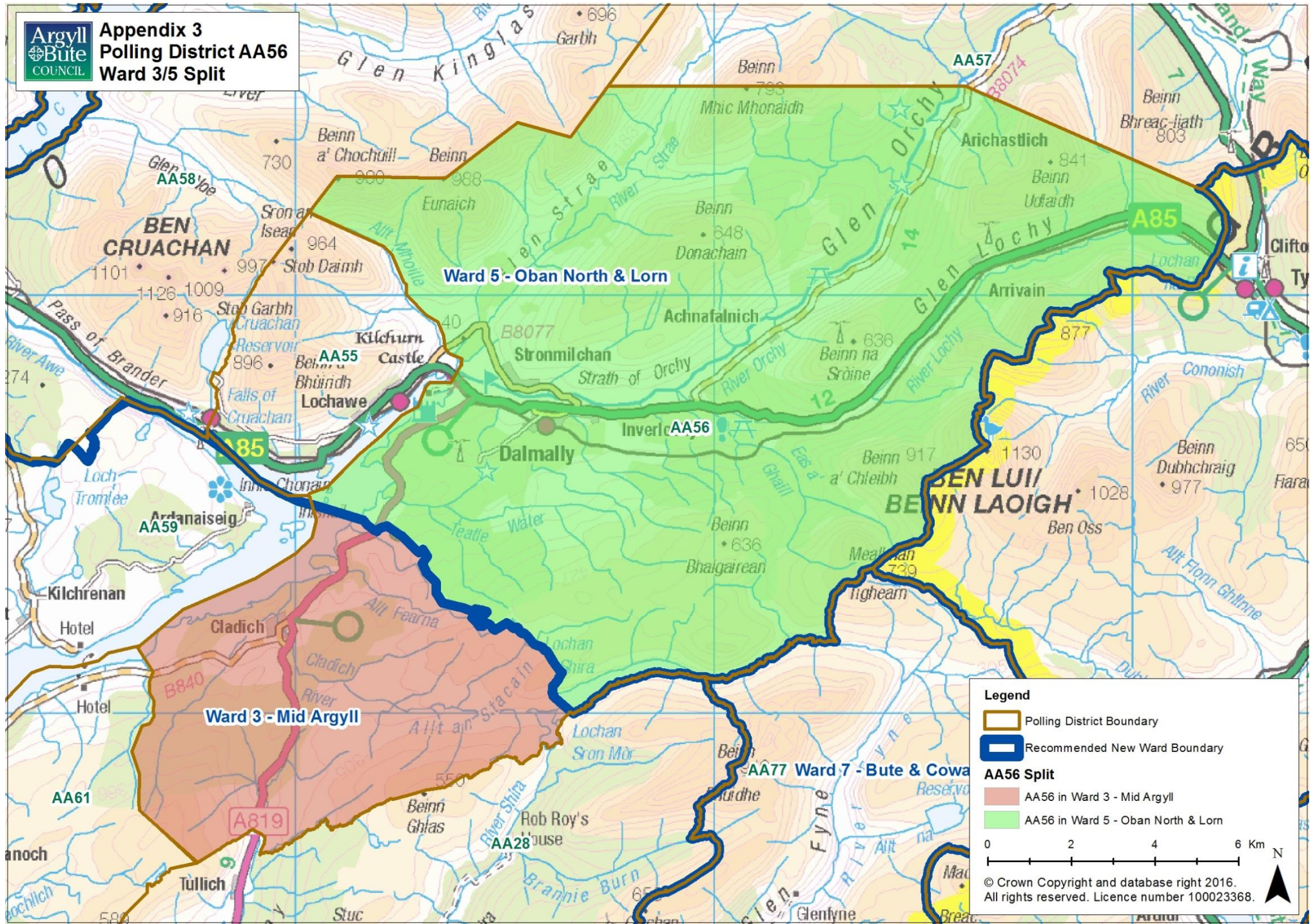


Appendix 2 Polling District AA27 Ward 2/3 Split





Appendix 3
Polling District AA56
Ward 3/5 Split



Ward 5 - Oban North & Lorn

Ward 3 - Mid Argyll

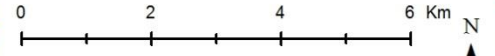
Ward 7 - Bute & Cowal

Legend

- Polling District Boundary
- Recommended New Ward Boundary

AA56 Split

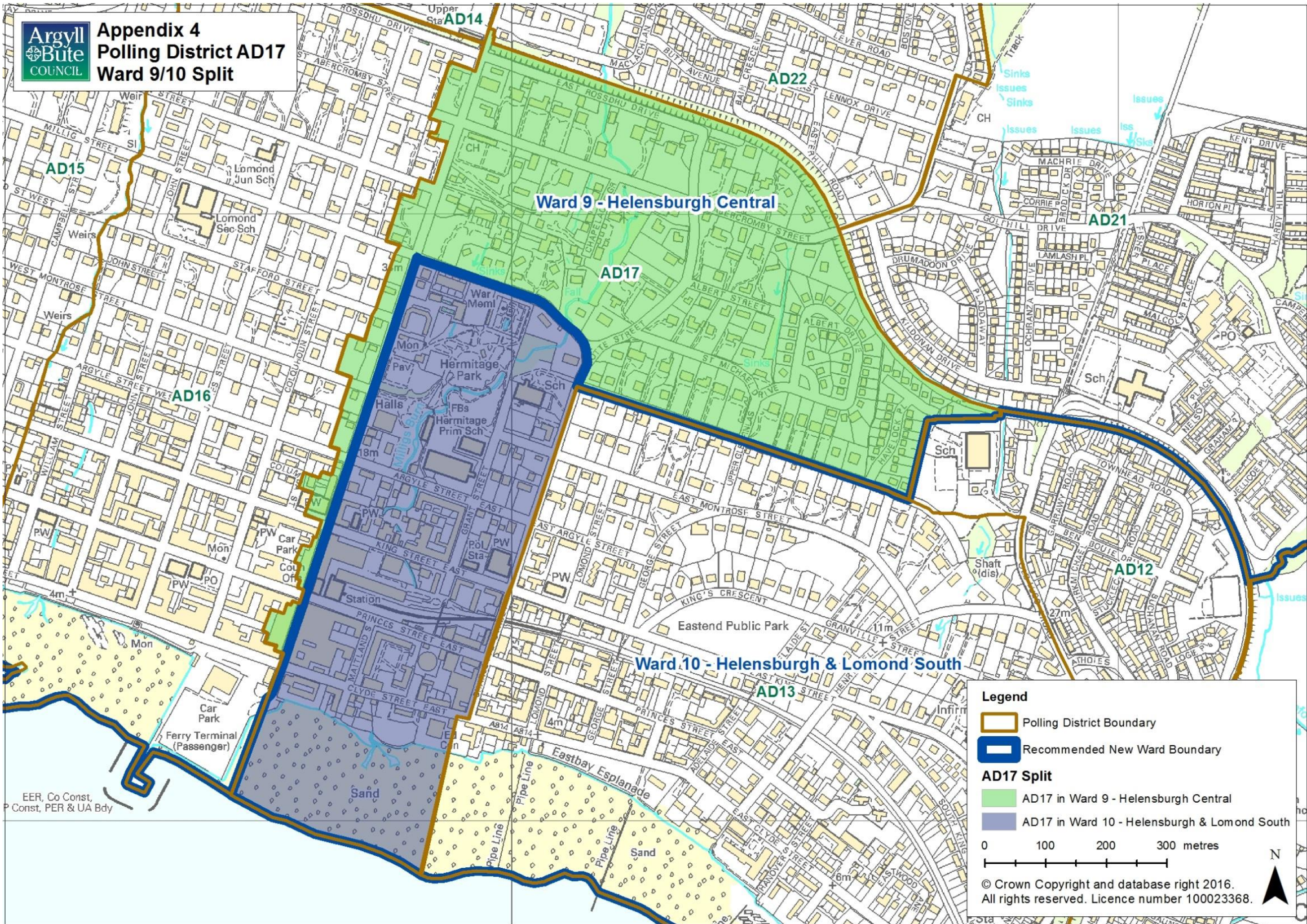
- AA56 in Ward 3 - Mid Argyll
- AA56 in Ward 5 - Oban North & Lorn



© Crown Copyright and database right 2016.
All rights reserved. Licence number 100023368.



Appendix 4
Polling District AD17
Ward 9/10 Split



Legend

- Polling District Boundary
- Recommended New Ward Boundary

AD17 Split

- AD17 in Ward 9 - Helensburgh Central
- AD17 in Ward 10 - Helensburgh & Lomond South

0 100 200 300 metres

© Crown Copyright and database right 2016. All rights reserved. Licence number 100023368.

EER, Co Const, Const, PER & UA Bdy

Footnote: The Local Government Boundary Commission for Scotland have made some minor cartographic changes to ward boundaries which subsequently will impact of polling district boundaries. These changes are mainly to remove straight lines and ensure all boundaries follow a feature on the ground (e.g. fence, road or river). None of these changes impact on electors. The map below shows an example of the cartographic changes.

