

## **VISUALISATIONS – PART I**



**INSTALLATION OF A SINGLE 20KW WIND TURBINE**

**ARDYNE FARM, TOWARD, DUNOON, PA23 7UJ**

## Ardyne Farm Wind Turbine Project

<b>Proposal</b>	Erection of a 20kw wind turbine on a 20m mast
<b>Address</b>	Land at Ardyne Farm, Toward, Dunoon, PA23 7UJ

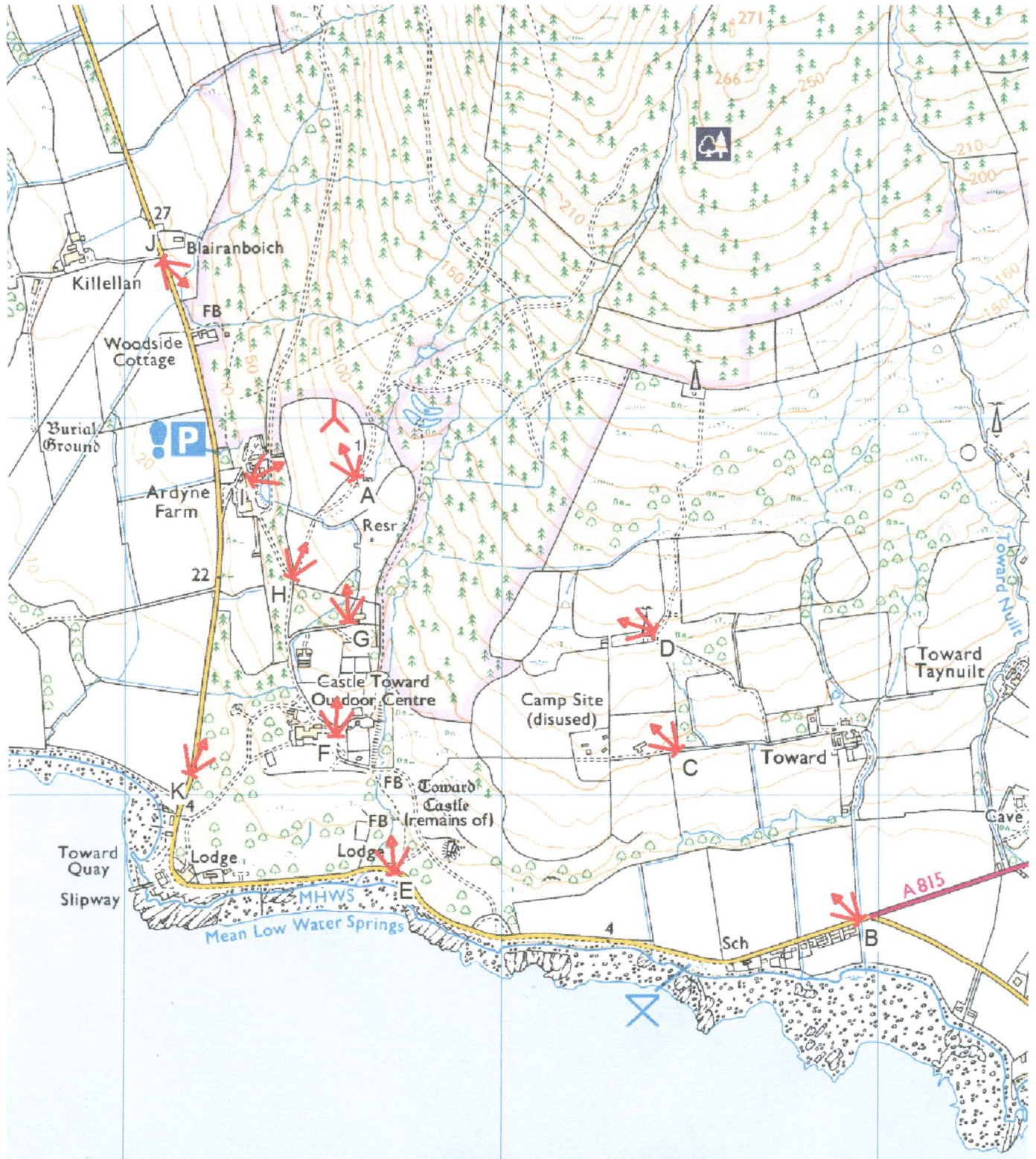
<b>Statement of Objective</b>
<p>This assessment has been compiled in order to provide visualisations in support of the proposed wind turbine installation on land at Ardyne Farm.</p> <p>Viewpoints have been selected to demonstrate the impact of the turbine when viewed from publically accessible points in the local area – such as roads – as well as from the nearby residence (Viewpoint a) to the south southeast of the proposed installation site.</p> <p>As can be seen from the photomontage images, the proposed development will have a low level of visual impact and will not be readily visible from many vantage points in the local area due to the shielding effect of extensive tree to growth in the area. As such, it is not anticipated that the proposed machine will detract from the character of the landscape.</p>

<b>Equipment Specifications</b>	Nikon D300
<b>Lens Height from Ground</b>	Approximately 1.5m
<b>Software</b>	WindPRO 2.8
<b>Weather Conditions</b>	Cloudy to west.

<b>Index</b>	
<b>Page 2</b>	OS Extract Map indicating viewpoints for photomontage images
<b>Page 3</b>	Viewpoint A Photomontage
<b>Page 4</b>	Viewpoint B Photomontage
<b>Page 5</b>	Viewpoint C Photomontage
<b>Page 6</b>	Viewpoint D Photomontage
<b>Page 7</b>	Viewpoint E Photomontage
<b>Page 8</b>	Viewpoint F Photomontage
<b>Page 9</b>	Viewpoint G Photomontage
<b>Page 10</b>	Viewpoint H Photomontage
<b>Page 11</b>	Viewpoint I Photomontage
<b>Page 12</b>	Viewpoint J Photomontage
<b>Page 13</b>	Viewpoint K Photomontage

**VISUAL - Map**

Calculation: Visualisations



Map: Ardyne 25000 , Print scale 1:15,000; Map center BN (AIRY) (Normal) East: 212,025 North: 668,543

▲ New WTG      ✕ Camera



Project:  
Young - Ardyne

Valid	New	No	Manufact.	Type-generator	Power, rated [kW]	Rotor diameter [m]	Hub height [m]	Distance [m]
1			C&F	CF20-20	20	13.1	20.5	171

**Recommended observation distance: 20 cm**  
 Photo exposed: 25/03/2012 16:26:00  
 Lens: 27 mm Film: 36x24 mm Pixels: 4288x2848  
 Eye point: BN (AIRY) (Normal) East: 211.615 North: 668.840  
 Wind direction: 0° Direction of photo: 333°  
 Software: WindPRO version 2.8.552 Jul 2012  
 Photo desc.: A Viewpoint A

Created by:  
 Mint Energy (Scotland) Ltd  
 Station House South Street  
 GB-MILNATHORT KY13 9XB  
 +44 1577 865 910  
 Kirstin Gardner / k.gardner@mint-energy.co.uk



Project:  
Young - Ardyne

Valid	Manufact.	Type-generator	Power, rated [kW]	Rotor diameter [m]	Hub height [m]	Distance [m]	
1	New	No C&F	CF20-20	20	13.1	20.5	1,932

**Recommended observation distance: 22 cm**  
 Photo exposed: 19/09/2011 17:53:00  
 Lens: 30 mm Film: 36x24 mm Pixels: 800x532  
 Eye point: BN (AIRY) (Normal) East: 212.953 North: 667.665  
 Wind direction: 0° Direction of photo: 311°  
 Software: WindPRO version 2.8.552 Jul 2012  
 Photo desc.: B Viewpoint B

Created by:  
 Mint Energy (Scotland) Ltd  
 Station House South Street  
 GB-MILNATHORT KY13 9XB  
 +44 1577 865 910  
 Kirstin Gardner / k.gardner@mint-energy.co.uk



Project:  
Young - Ardyne

Valid	No	Manufact.	Type-generator	Power, rated	Rotor diameter	Hub height	Distance
				[kW]	[m]	[m]	[m]
1	New	C&F	CF20-20	20	13.1	20.5	1,270

**Recommended observation distance: 20 cm**  
 Photo exposed: 19/09/2011 18:04:00  
 Lens: 27 mm Film: 36x24 mm Pixels: 800x532  
 Eye point: BN (AIRY) (Normal) East: 212,468 North: 668,116  
 Wind direction: 0° Direction of photo: 312°  
 Software: WindPRO version 2.8.552 Jul 2012  
 Photo desc.: C Viewpoint C

Created by:  
 Mint Energy (Scotland) Ltd  
 Station House South Street  
 GB-MILNATHORT KY13 9XB  
 +44 1577 865 910  
 Kirstin Gardner / k.gardner@mint-energy.co.uk



Project:  
Young - Ardyne

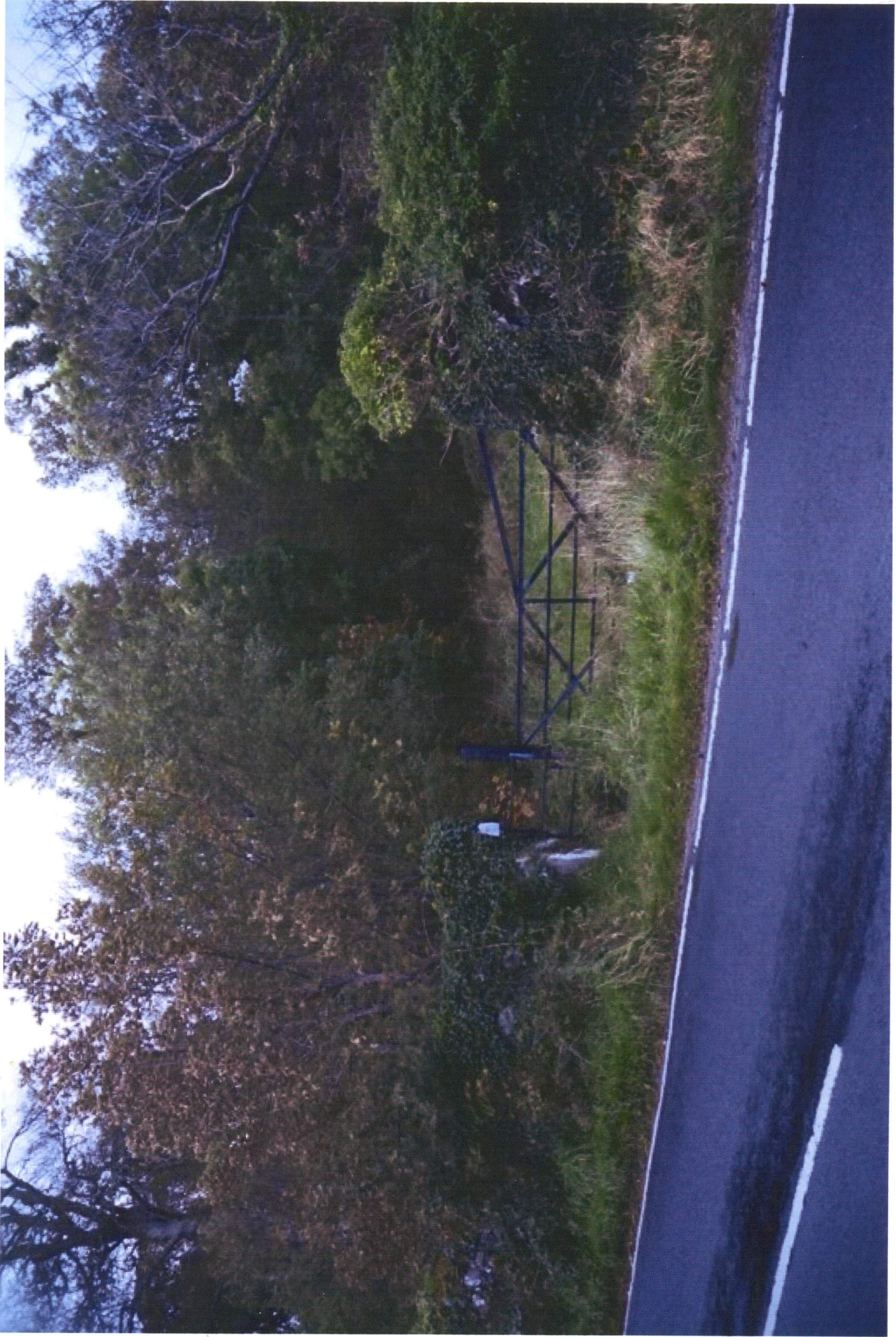
Valid	Manufact.	Type-generator	Power, rated [kW]	Rotor diameter [m]	Hub height [m]	Distance [m]	
1	New	C&F	CF20-20	20	13.1	20.5	1,023

**Recommended observation distance: 20 cm**

Photo exposed: 19/09/2011 18:14:00  
 Lens: 27 mm Film: 36x24 mm Pixels: 800x532  
 Eye point: BN (AIRY) (Normal) East: 212,407 North: 668,432  
 Wind direction: 0° Direction of photo: 286°  
 Software: WindPRO version 2.8.552 Jul 2012  
 Photo desc.: D Viewpoint D

Created by:

Mint Energy (Scotland) Ltd  
 Station House South Street  
 GB-MILNATHORT KY13 9XB  
 +44 1577 865 910  
 Kirstin Gardner / k.gardner@mint-energy.co.uk



Project:  
Young - Ardyne

Valid	No	Manufact.	Type-generator	Power, rated [kW]	Rotor diameter [m]	Hub height [m]	Distance [m]
1	New	C&F	CF20-20	20	13.1	20.5	1,222

**Recommended observation distance: 20 cm**  
 Photo exposed: 19/09/2011 18:24:00  
 Lens: 27 mm Film: 36x24 mm Pixels: 800x532  
 Eye point: BN (AIRY) (Normal) East: 211,718 North: 667,789  
 Wind direction: 0° Direction of photo: 352°  
 Software: WindPRO version 2.8.552 Jul 2012  
 Photo desc.: E Viewpoint E

Created by:  
 Mint Energy (Scotland) Ltd  
 Station House South Street  
 GB-MILNATHORT KY13 9XB  
 +44 1577 865 910  
 Kirstin Gardner / k.gardner@mint-energy.co.uk





Project:  
Young - Ardyne

Valid	No	Manufact.	Type-generator	Power, rated [kW]	Rotor diameter [m]	Hub height [m]	Distance [m]
1	New	C&F	CF20-20	20	13.1	20.5	847

**Recommended observation distance: 20 cm**  
 Photo exposed: 19/09/2011 18:27:00  
 Lens: 27 mm Film: 36x24 mm Pixels: 800x532  
 Eye point: BN (AIRY) (Normal) East: 211.562 North: 668.154  
 Wind direction: 0° Direction of photo: 359°  
 Software: WindPRO version 2.8.552 Jul 2012  
 Photo desc.: F Viewpoint F

Created by:  
 Mint Energy (Scotland) Ltd  
 Station House South Street  
 GB-MILNATHORT KY13 9XB  
 +44 1577 865 910  
 Kirstin Gardner / k.gardner@mint-energy.co.uk



Project:  
Young - Ardyne

Valid	No	Manufact.	Type-generator	Power, rated [kW]	Rotor diameter [m]	Hub height [m]	Distance [m]
1	New	C&F	CF20-20	20	13.1	20.5	545

**Recommended observation distance: 20 cm**  
 Photo exposed: 19/09/2011 18:30:00  
 Lens: 27 mm Film: 36x24 mm Pixels: 800x532  
 Eye point: BN (AIRY) (Normal) East: 211,593 North: 668,457  
 Wind direction: 0° Direction of photo: 355°  
 Software: WindPRO version 2.8.552 Jul 2012  
 Photo desc.: G Viewpoint G

Created by:  
 Mint Energy (Scotland) Ltd  
 Station House South Street  
 GB-MILNATHORT KY13 9XB  
 +44 1577 865 910  
 Kirstin Gardner / k.gardner@mint-energy.co.uk



Project:  
Young - Ardyne

Valid	No	Manufact.	Type-generator	Power, rated [kW]	Rotor diameter [m]	Hub height [m]	Distance [m]
1	New	C&F	CF20-20	20	13.1	20.5	440

**Recommended observation distance: 20 cm**  
Photo exposed: 19/09/2011 18:32:00  
Lens: 28 mm Film: 36x24 mm Pixels: 800x532  
Eye point: BN (AIRY) (Normal) East: 211.443 North: 668.576  
Wind direction: 0° Direction of photo: 20°  
Software: WindPRO version 2.8.552 Jul 2012  
Photo desc.: H Viewpoint H

Created by:  
Mint Energy (Scotland) Ltd  
Station House South Street  
GB-MILNATHORT KY13 9XB  
+44 1577 865 910  
Kirstin Gardner / k.gardner@mint-energy.co.uk



Project:  
Young - Ardyne

**Recommended observation distance: 20 cm**  
 Photo exposed: 19/09/2011 18:35:00  
 Lens: 27 mm Film: 36x24 mm Pixels: 800x532  
 Eye point: BN (AIRY) (Normal) East: 211,333 North: 668,835  
 Wind direction: 0° Direction of photo: 60°  
 Software: WindPRO version 2.8.552 Jul 2012  
 Photo desc.: | Viewpoint |

Valid	No	Manufact.	Type-generator	Power, rated [kW]	Rotor diameter [m]	Hub height [m]	Distance [m]
1	New	C&F	CF20-20	20	13.1	20.5	279

Created by:  
 Mint Energy (Scotland) Ltd  
 Station House South Street  
 GB-MILNATHORT KY13 9XB  
 +44 1577 865 910  
 Kirstin Gardner / k.gardner@mint-energy.co.uk



Project:  
Young - Ardyne

Valid	No	Manufact.	Type-generator	Power, rated [kW]	Rotor diameter [m]	Hub height [m]	Distance [m]
1	New	C&F	CF20-20	20	13.1	20.5	621

**Recommended observation distance: 20 cm**  
 Photo exposed: 19/09/2011 18:37:00  
 Lens: 27 mm Film: 36x24 mm Pixels: 800x532  
 Eye point: BN (AIRY) (Normal) East: 211,098 North: 669,420  
 Wind direction: 0° Direction of photo: 132°  
 Software: WindPRO version 2.8.552 Jul 2012  
 Photo desc.: J Viewpoint J

Created by:  
 Mint Energy (Scotland) Ltd  
 Station House South Street  
 GB-MILNATHORT KY13 9XB  
 +44 1577 865 910  
 Kirstin Gardner / k.gardner@mint-energy.co.uk



Project:  
Young - Ardyne

Valid	New	No	Manufact.	Type-generator	Power, rated [kW]	Rotor diameter [m]	Hub height [m]	Distance [m]
1			C&F	CF20-20	20	13.1	20.5	1,023

**Recommended observation distance: 20 cm**  
 Photo exposed: 19/09/2011 18:40:00  
 Lens: 27 mm Film: 36x24 mm Pixels: 800x532  
 Eye point: BN (AIRY) (Normal) East: 211,173 North: 668,053  
 Wind direction: 0° Direction of photo: 22°  
 Software: WindPRO version 2.8.552 Jul 2012  
 Photo desc.: K Viewpoint K

Created by:  
 Mint Energy (Scotland) Ltd  
 Station House South Street  
 GB-MILNATHORT KY13 9XB  
 +44 1577 865 910  
 Kirstin Gardner / k.gardner@mint-energy.co.uk